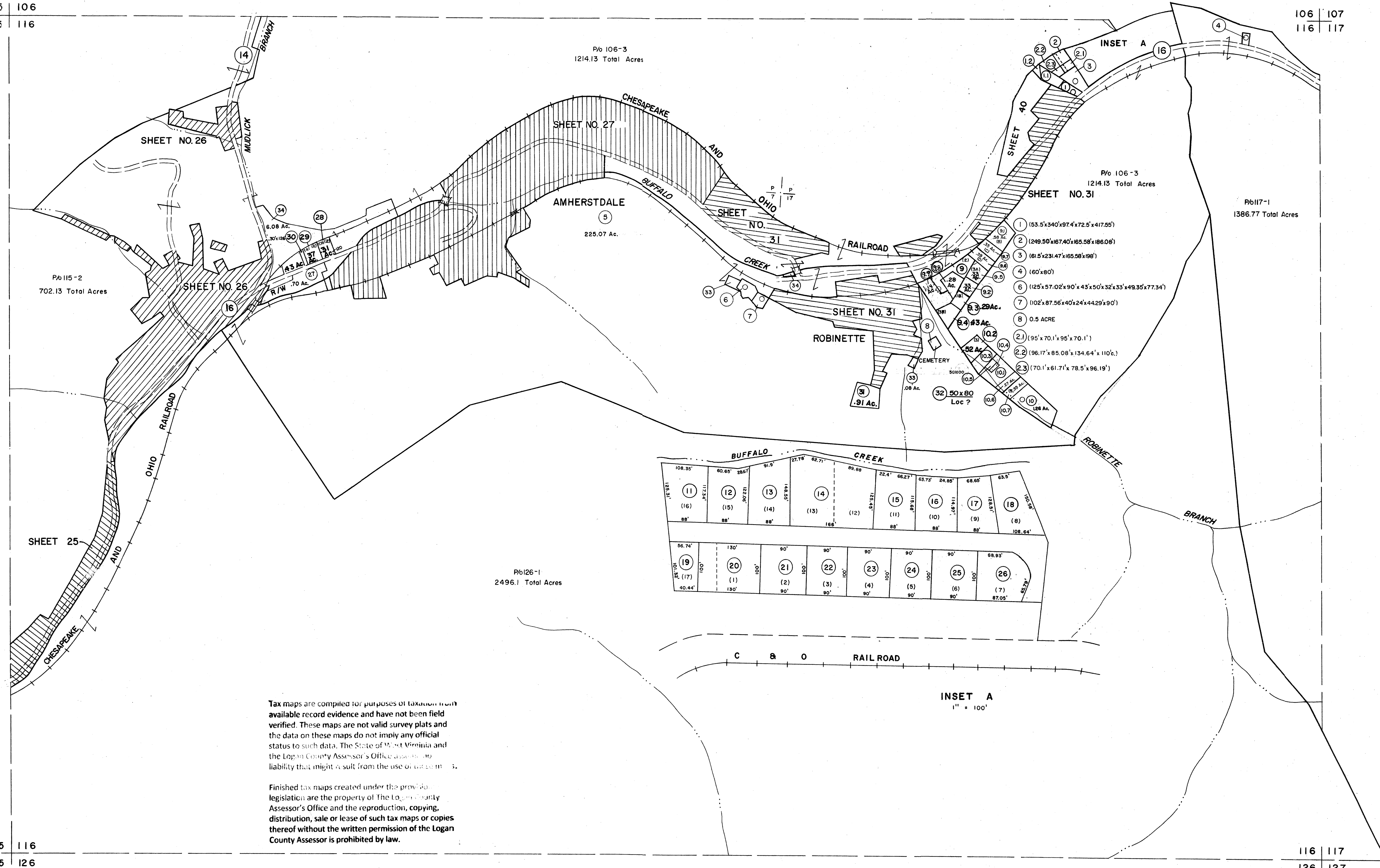


105 | 106
115 | 116

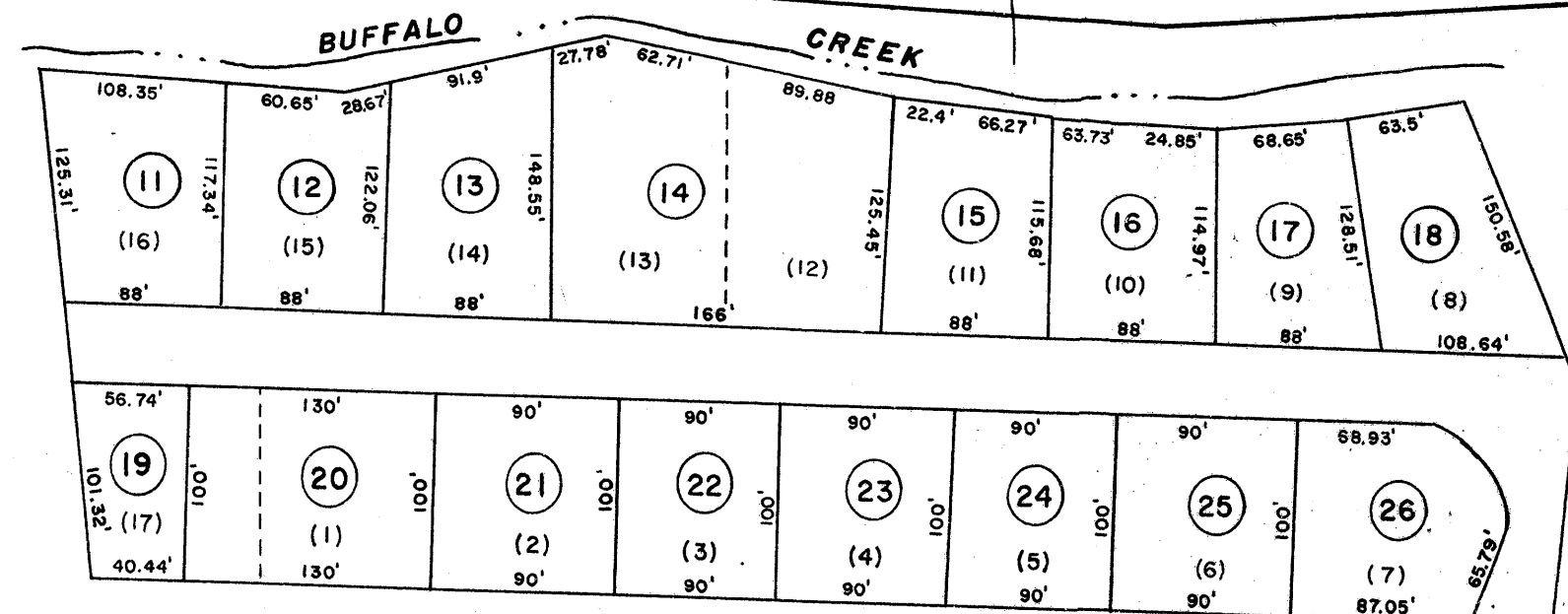
106 | 107
116 | 117

115 | 116
125 | 126

116 | 117
126 | 127



- P/6 106-3
1214.13 Total Acres
- 1 (53.5x340x97.4x72.5x417.05')
 - 2 (249.50x167.40x165.58x186.08')
 - 3 (61.5x231.47x165.96x196')
 - 4 (60'x80')
 - 6 (125x57.02x90'x43x50'x32'x33'x49.35x77.34')
 - 7 (102'x87.56x40x24'x44.29x90')
 - 8 0.5 ACRE
 - 2.1 (95'x70.1'x95'x70.1')
 - 2.2 (96.17'x85.08'x134.64'x110c.)
 - 2.3 (70.1'x61.71'x78.5'x96.19')



Tax maps are compiled for purposes of taxation from available record evidence and have not been field verified. These maps are not valid survey plats and the data on these maps do not imply any official status to such data. The State of West Virginia and the Logan County Assessor's Office assume no liability that might result from the use of tax maps.

Finished tax maps created under the provisions of legislation are the property of the Logan County Assessor's Office and the reproduction, copying, distribution, sale or lease of such tax maps or copies thereof without the written permission of the Logan County Assessor is prohibited by law.

For Tax Purposes Only
Prepared by
MICHAEL BAKER, JR., INC.
Consulting Engineers
Rochester, Pennsylvania

Legend	
Property line	Original lot line
Edge of pavement or roadway	Deed lot number
Corporation line	Parcel or index number
District line	Improvement
County line	Railroad

Revisions			
1	4-1-64	9	10/21/15
2	To JAN. 1, 83 C.P.	10	3/28/16
3	To 7-1-84 C.P.	11	1/16
4	Revised 6/1/89	12	4-2018
5	OGIS 5/2/92	13	DSH
6	7-1-2000 J.E.B.	14	
7	6-2-2003 J.E.B.	15	
8		16	

KEY MAP
106
115 | 116 | 117
126

LOGAN COUNTY
STATE OF WEST VIRGINIA
Office of Assessor

DISTRICT
TRIADELPHIA
SHEET NO: 116
Date, Aerial Photography: November, 1962 Date, Map: April, 1963
Photo No: Scale: 1" = 400'