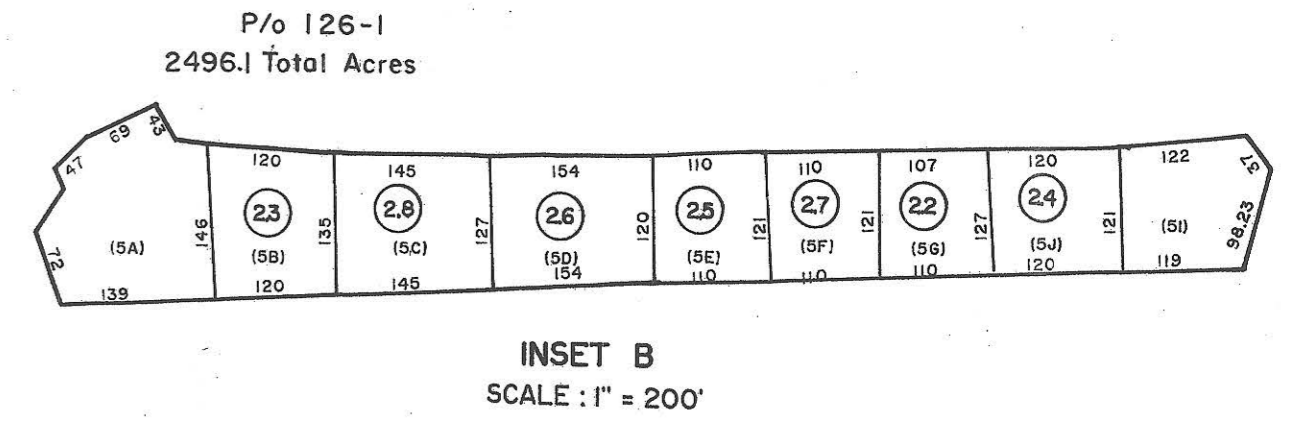
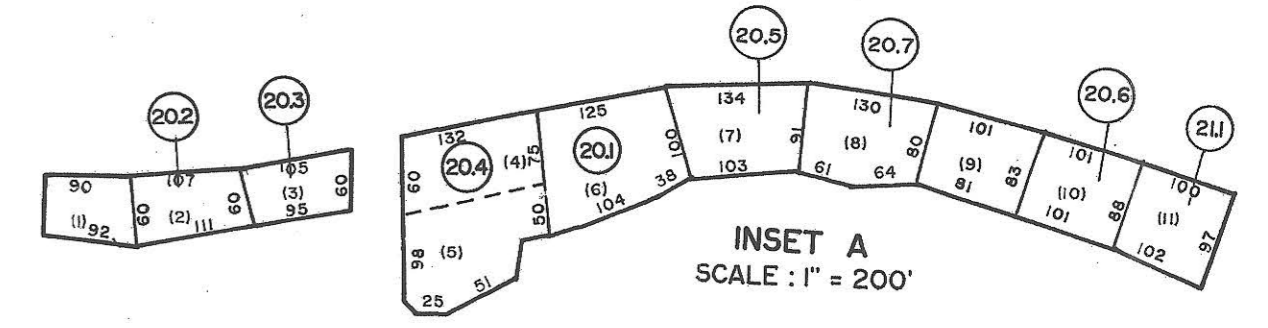
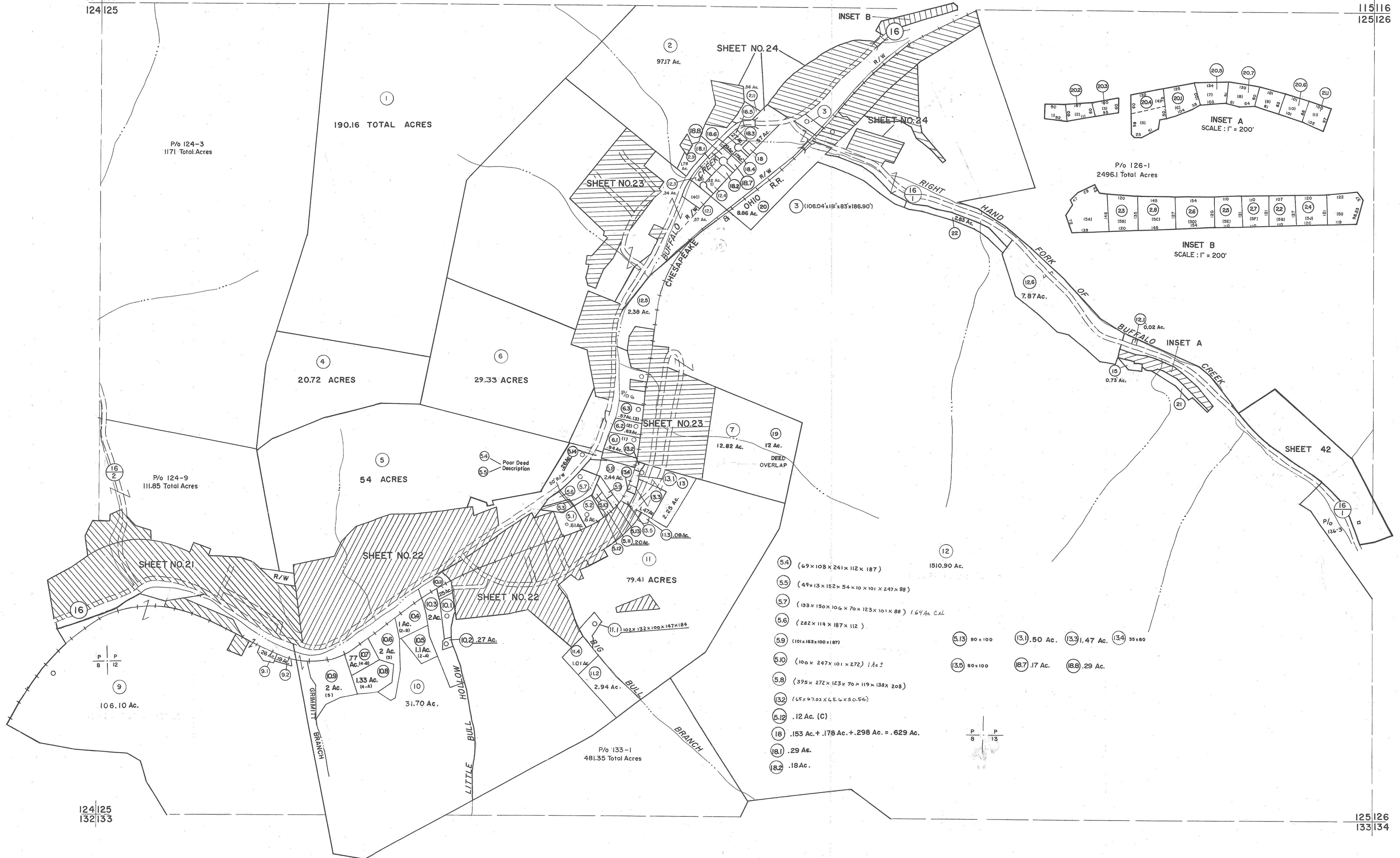


114|115
124|125

115|116
125|126

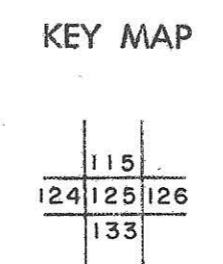


- 5.4 (69x108x241x112x187)
- 5.5 (49x13x152x54x10x101x247x88)
- 5.7 (133x150x106x70x123x101x88) 1.64 Ac. CAL
- 5.6 (282x114x187x112)
- 5.9 (101x162x100x187)
- 5.10 (100x247x101x272) 1 Ac ±
- 5.8 (395x272x123x70x119x138x208)
- 5.12 .12 Ac. (C)
- 5.18 .153 Ac. + .178 Ac. + .298 Ac. = .629 Ac.
- 5.18.1 .29 Ac.
- 5.18.2 .18 Ac.
- 5.13 80x100
- 5.15 80x100
- 5.16 80x100
- 5.17 .17 Ac.
- 5.18 .29 Ac.
- 5.19 80x100
- 5.20 .50 Ac.
- 5.21 1.47 Ac.
- 5.22 35x80

For Tax Purposes Only
 Prepared by
MICHAEL BAKER, JR., INC.
 Consulting Engineers
 Rochester, Pennsylvania

Legend	
Property line	———
Edge of pavement or roadway	———
Corporation line	———
District line	———
County line	———
Original lot line	———
Deed lot number	(15)
Parcel or index number	(99)
Improvement	○
Railroad	—+—+—+—

Revisions			
1	4-1-64	9	7-1-2000 J.E.B
2	1-78	10	6-2-2003 JEB
3	To 1-1-83 C.P.	11	2/24/10 S.B.H
4	July 1987	12	2/25/15 S.B.H
5	To 7-1-84 C.P.	13	
6	July 1986	14	
7	Revised to 9-1-87	15	
8	OGIS 5/2/92	16	



LOGAN COUNTY
 STATE OF WEST VIRGINIA
 Office of Assessor

DISTRICT **TRIADELPHIA**
SHEET NO: 125
 Date, Aerial Photography: November, 1962 Date, Map April, 1963
 Photo No: Scale: 1" = 400'