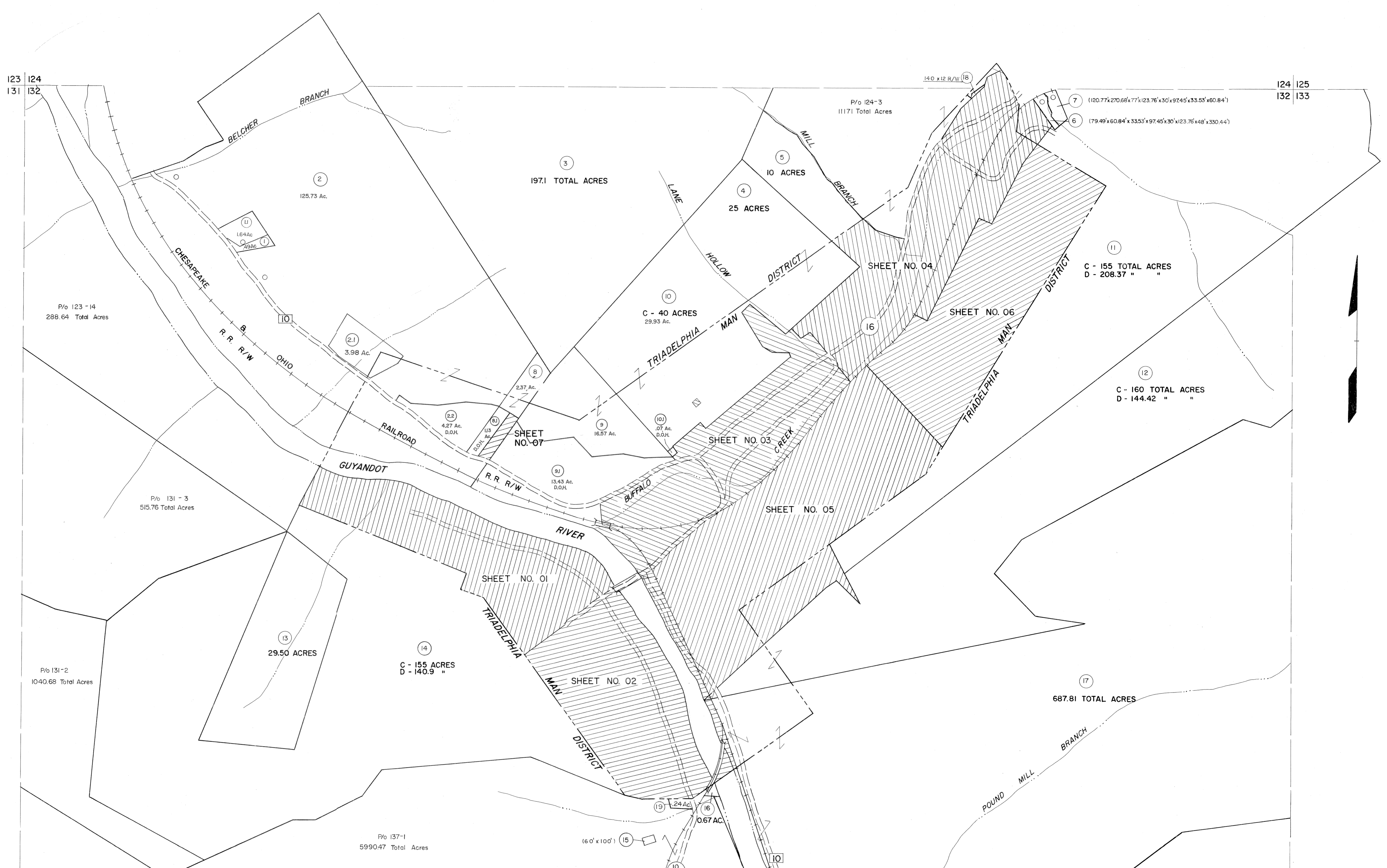


123 124
131 132

124 125
132 133

131 132
137 138

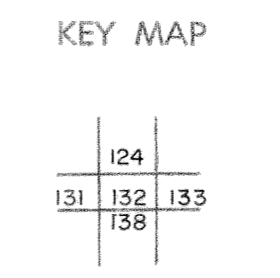
132 133
138 139



For Tax Purposes Only
 Prepared by
MICHAEL BAKER, JR., INC.
 Consulting Engineers
 Rochester, Pennsylvania

Legend	
Property line	Original lot line
Edge of pavement or roadway	Dead lot number (15)
Corporation line	Parcel or index number (16)
District line	Improvement
County line	Railroad

Revisions	
1	4-1-64
2	January, 1969
3	Revised to 7-1-87
4	OGIS 5/3/92 DSH
5	6-2-2003 JEB
6	11-6-08 H&S
7	
8	



LOGAN COUNTY
 STATE OF WEST VIRGINIA
 Office of Assessor

DISTRICT **TRIADDELPHIA**
SHEET NO: 132
 Date, Aerial Photography: November, 1962 Date, Map: April, 1963
 Photo No: Scale: 1" = 400'