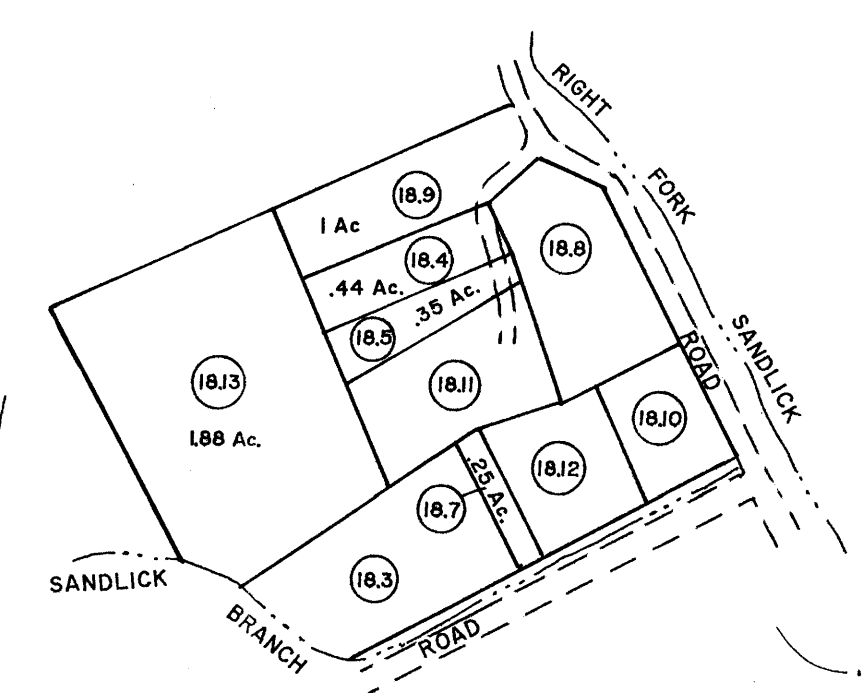


- 12 (85' x 150' x 100' x 150')
- 13 (90' x 75')
- 14 (100' x 50')
- 15 (180' x 160' x 178' x 50')
- 16A (90 x 53 x 130 x 94)
- 31 1 ACRE

- 4.5 (95 x 175 x 150)
- 4.8 .23 Ac.
- 7.1 (215 x 55 x 194.3 x 92)
- 7.2 (41 x 21.5 x 47.7 x 47.3 x 35.8 x 145.4 x 94.4 x 94.4)
- 4.5 (80 x 98 x 80 x 98)
- 4.6 (98 x 17 x 86 x 141)
- 17 .25 Ac.
- 18.3 (420 x 352 x 192)
- 18.6 1 Ac. (A) .25 Ac. (C)
- 18.9 1 Ac.
- 18.10 23 Ac.
- 40.1 450 x 450 x 650



INSET "A" 1" = 100'

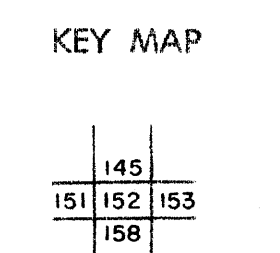
Tax maps are compiled for purposes of taxation from available record evidence and have not been field verified. These maps are not valid survey plats and the data on these maps do not imply any official status to such data. The State of West Virginia and the Logan County Assessor's Office assume no liability that might result from the use of these maps.

Finished tax maps created under the provisions of legislation are the property of the Logan County Assessor's Office and the reproduction, copying, distribution, sale or lease of such tax maps or copies thereof without the written permission of the Logan County Assessor is prohibited by law.

For Tax Purposes Only
 Prepared by
MICHAEL BAKER, JR., INC.
 Consulting Engineers
 Rochester, Pennsylvania

Legend	
Property line	Original lot line
Edge of pavement or roadway	Deed lot number (15)
Corporation line	Parcel or index number (29)
District line	Improvement
County line	Railroad

Revisions			
1	4-1-64	9	OGIS 5/2/82 DSH
2	1-78	10	B-1-97 J.E.B
3	January 1983	11	7-1-2000 J.E.B
4	July 14 1983	12	6-2-2003 J.E.B
5	July 16 7-1-84 C.P.	13	7-1-02 TO 7-1-04 L.S.5
6	July 1986	14	4-18 C.M
7	Revised to 7-1-89	15	
8		16	



LOGAN COUNTY
 STATE OF WEST VIRGINIA
 Office of Assessor

DISTRICT **TRIADELPHIA**
SHEET NO: 152
 Date, Aerial Photography: November 1962 Date, Map: April 1963
 Photo No: Scale: 1" = 400'