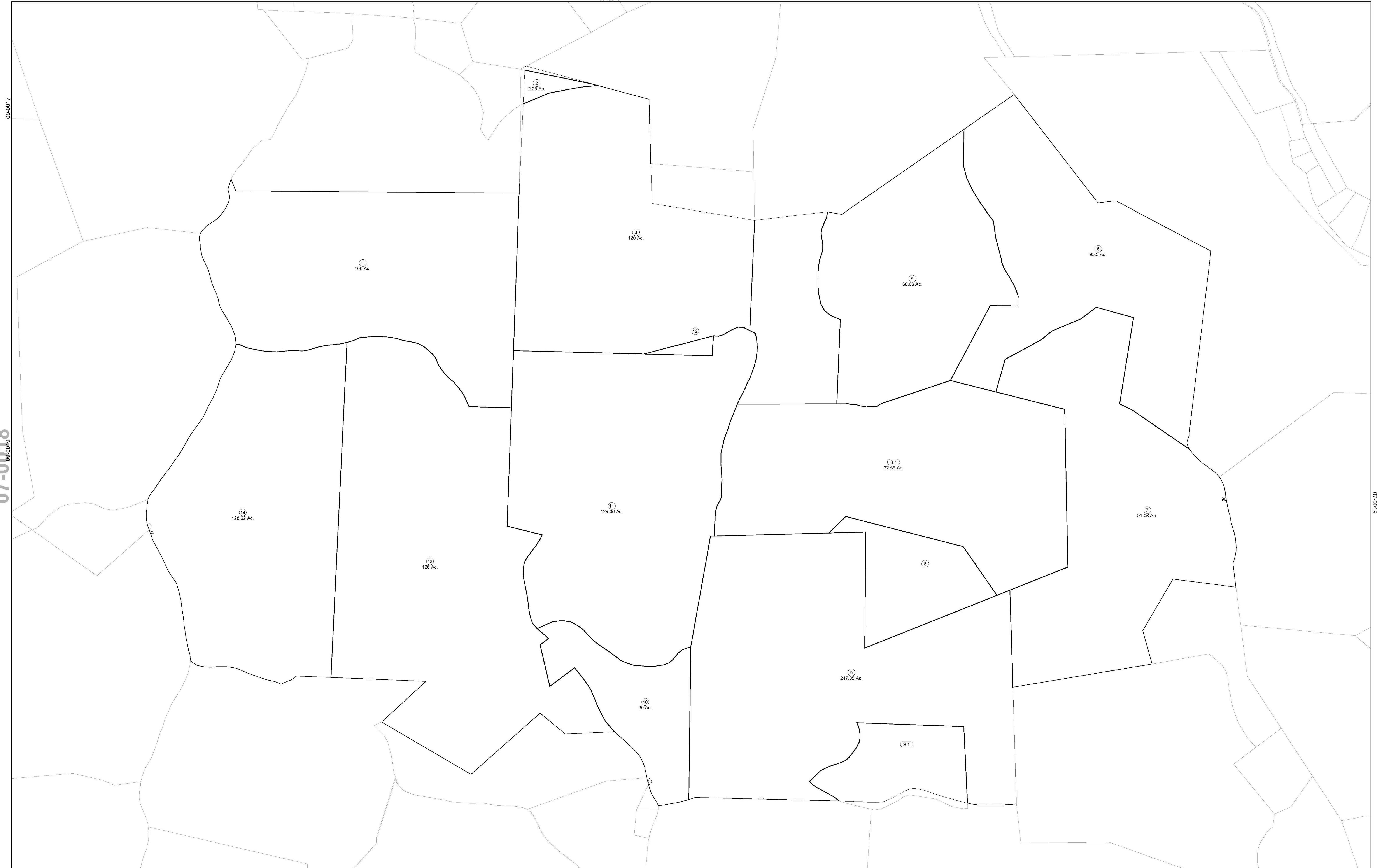


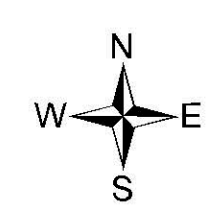
07-0017

09-0017

07-0018



07-0019



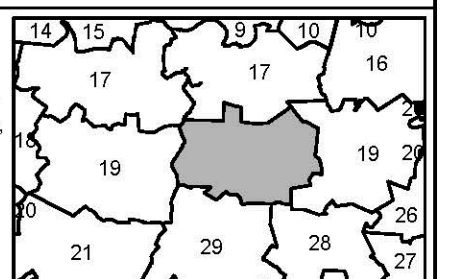
**FOR TAX PURPOSES ONLY**  
 Prepared By:  
**Chris Kessler**  
 Marshall County Assessor

Legend		07-0029
Property Line	—	Original Lot Line
Edge of pavement or roadway	- - - -	Deed lot number (in parenthesis)
Corporation line	- · - · -	Parcel or index number
District line	- - - - -	Improvement
County Line	- - - - -	Railroad
		Water

(15)	
○	
—	

Restriction	
revised 7-1-2010 KAS	

All tax maps created under the provisions of neoprecipal legislation are the property of the Assessor of Marshall County, West Virginia and the reproduction, copying, modification, distribution or sale of such tax maps or any copies thereof without the written permission of the Marshall County Assessor is prohibited by law.



**MARSHALL COUNTY - WEST VIRGINIA**  
 Office of Assessor

**District: 07 Liberty Dist**  
**Map No: 18**  
**Date: Oct 07, 2011**  
**Scale: 1 inch = 400 feet**