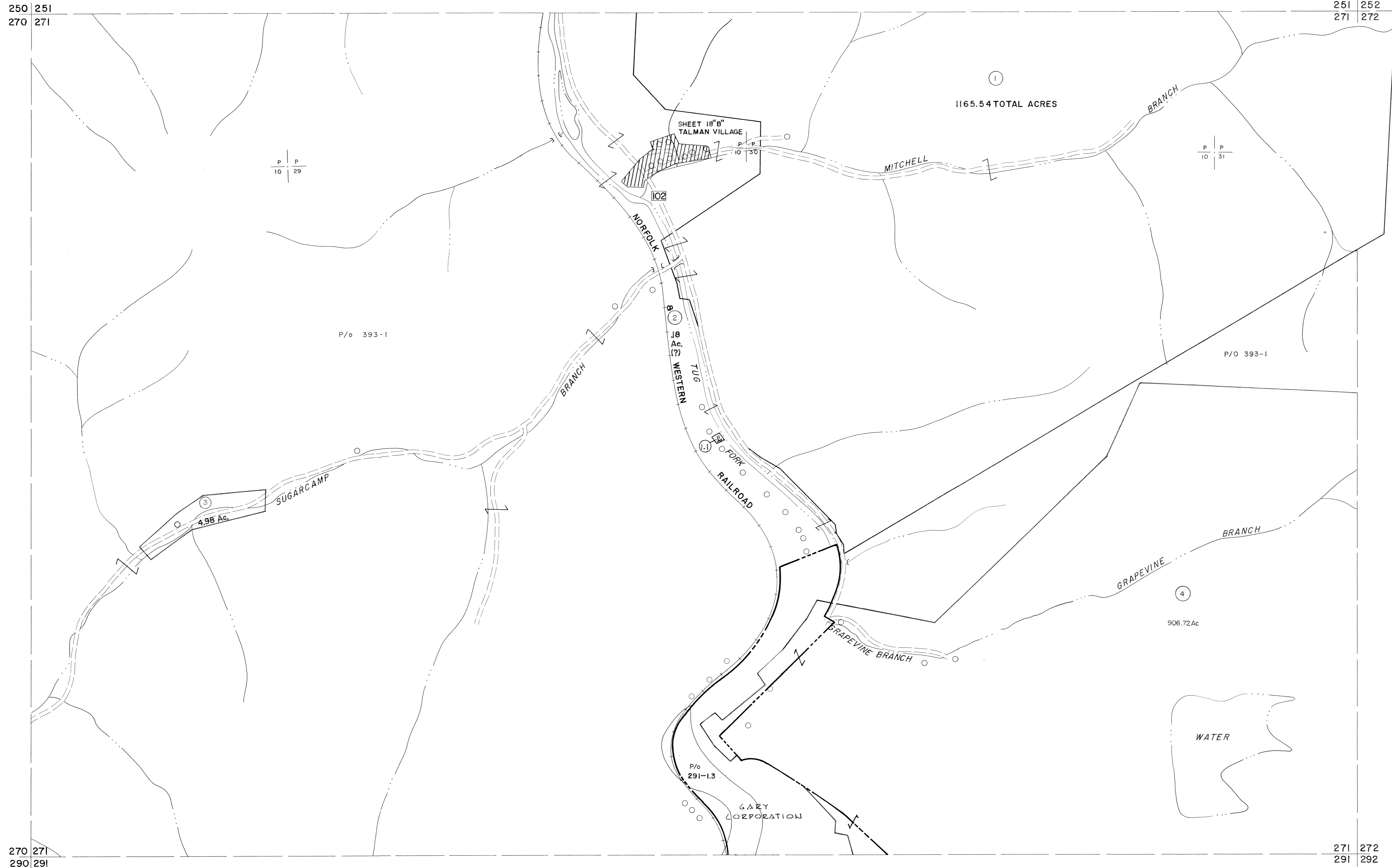


250 251  
270 271

251 252  
271 272



270 271  
290 291

271 272  
291 292

**For Tax Purposes Only**

Prepared by  
**MICHAEL BAKER, JR., INC.**  
Consulting Engineers  
Rochester, Pennsylvania

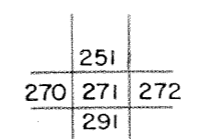
**Legend**

Property line	— — — — —	Original lot line	— — — — —
Edge of pavement or roadway	— — — — —	Deed lot number	(15)
Corporation line	— — — — —	Parcel or index number	(99)
District line	— — — — —	Improvement	o
County line	— — — — —	Railroad	— — — — —

**Revisions**

1	4-15-64	9	5-15-05	4.5	17
2	4-18-72 T.M.	10	SBH	8/27/06	18
3	12-10-74 T.G.	11	2-1-10	#45	19
4	7-1-83	12			20
5	12-19-85	13			21
6	SLS INC. 6/26/98 DSW	14			22
7	SLS INC. 12/31/98 DSW	15			23
8	5/23/04	16	SBH		24

**KEY MAP**



**McDOWELL COUNTY**  
STATE OF WEST VIRGINIA  
Office of Assessor

**DISTRICT**

**ADKIN**

**SHEET NO: 271**

Date, Aerial Photography: April, 1961  
Date, Map: July, 1962  
Photo No: Scale: 1"=400'