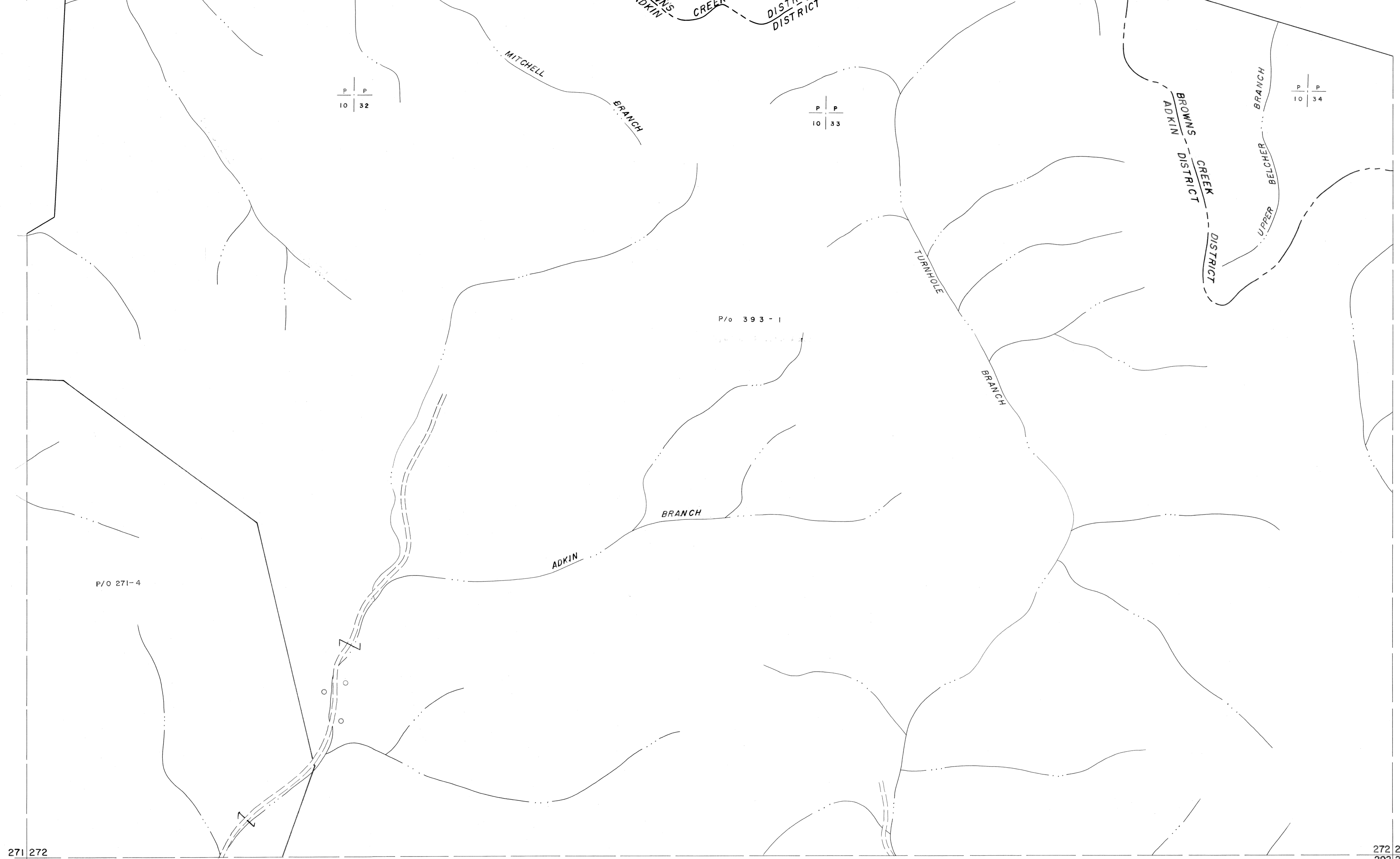


251 252  
271 272

252 253  
272 273



271 272  
291 292

272 273  
292 293

**For Tax Purposes Only**

Prepared by  
**MICHAEL BAKER, JR., INC.**  
Consulting Engineers  
Rochester, Pennsylvania

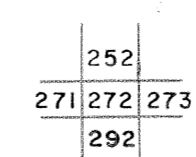
**Legend**

Property line	———	Original lot line	-----
Edge of pavement or roadway	———	Deed lot number	(15)
Corporation line	-----	Parcel or index number	○
District line	-----	Improvement	○
County line	-----	Railroad	—+—

**Revisions**

1	4-15-64	9	17
2	2-1-83	10	18
3	2-1-83	11	19
4	2-1-83	12	20
5	2-1-10	13	21
6		14	22
7		15	23
8		16	24

**KEY MAP**



**MCDOWELL COUNTY**  
STATE OF WEST VIRGINIA  
Office of Assessor

**DISTRICT**

**ADKIN**

**SHEET NO: 272**

Date, Aerial Photography: April, 1961      Date, Map: July, 1962  
Photo No:      Scale: 1" = 400'