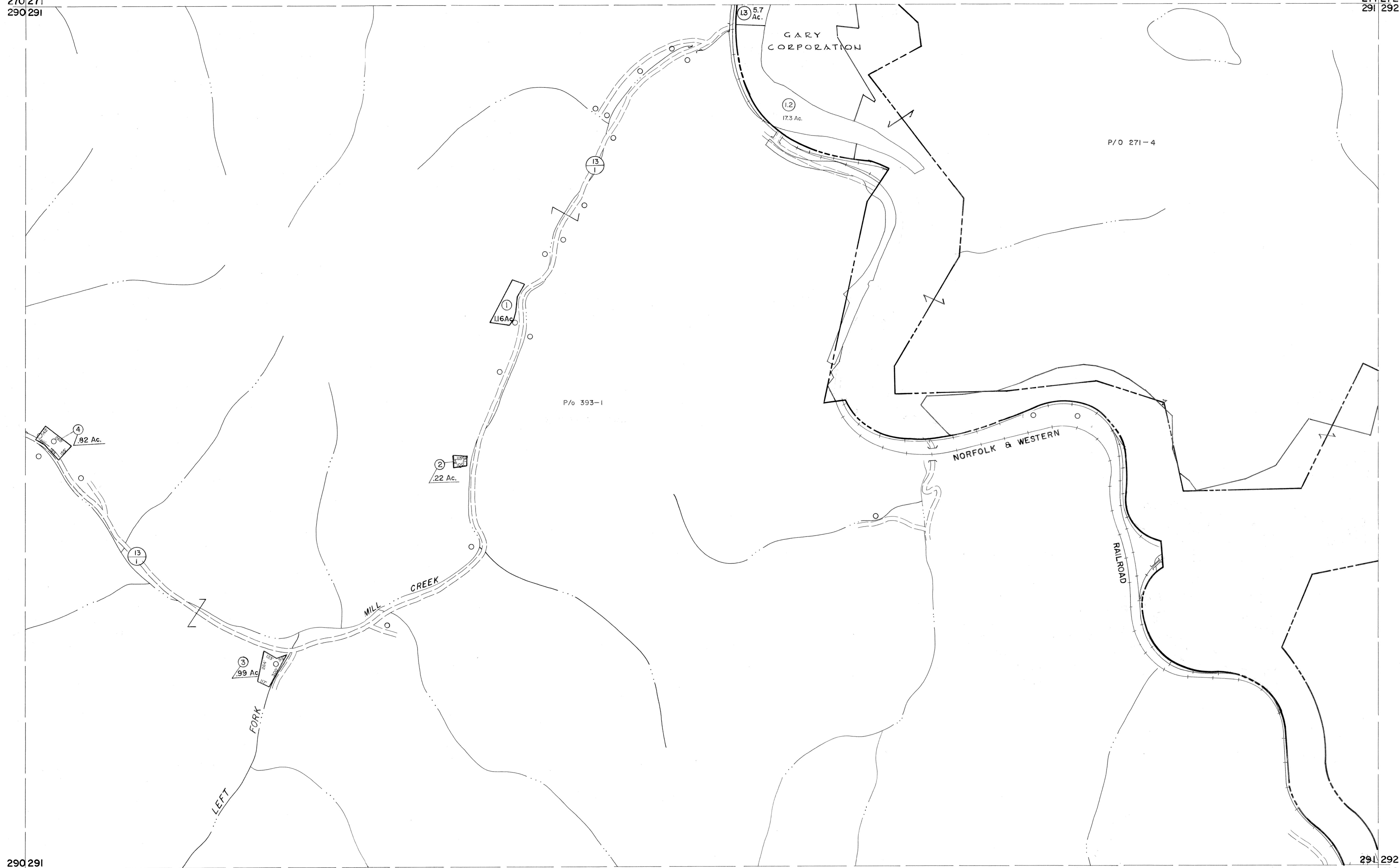


270|271
290|291

271|272
291|292



290|291
310|311

291|292
311|312

For Tax Purposes Only

Prepared by
MICHAEL BAKER, JR., INC.
Consulting Engineers
Rochester, Pennsylvania

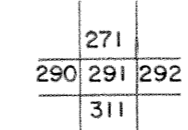
Legend

Property line	—————	Original lot line	-----
Edge of pavement or roadway	-----	Deed lot number	(15)
Corporation line	-----	Parcel or index number	(29)
District line	-----	Improvement	o
County line	-----	Railroad	o

Revisions

No.	Description	Date	By
1	4-15-64	9	2-1-10 H&S
2	4-18-72 T.D.M.	10	
3	7-1-83 L.B.S.	11	
4	1-16-85 J.K.L.	12	
5	SLS INC. 6/26/98 J.W.M.	13	
6	SLS INC. 1/4/99 D.S.W.	14	
7	5/23/04 S & H	15	
8	5-15-05 H&S	16	
9		17	
10		18	
11		19	
12		20	
13		21	
14		22	
15		23	
16		24	

KEY MAP



McDOWELL COUNTY
STATE OF WEST VIRGINIA
Office of Assessor

DISTRICT

ADKIN

SHEET NO: 291

Date, Aerial Photography: April, 1961 Date, Map: July, 1962
Photo No: Scale: 1" = 400'