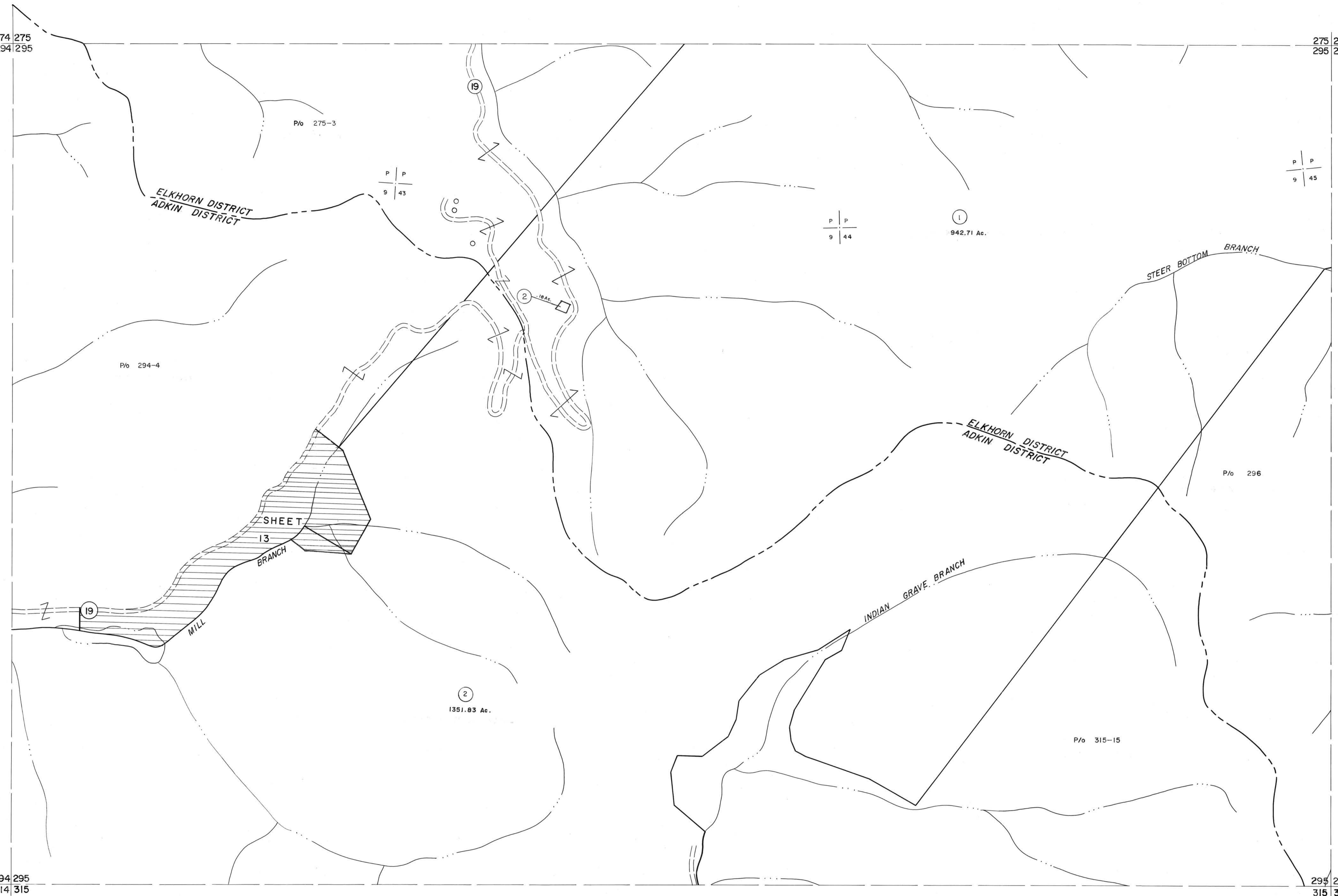


274 275  
294 295

275 276  
295 296

294 295  
314 315

295 296  
315 316



For Tax Purposes Only  
 Prepared by  
**MICHAEL BAKER, JR., INC.**  
 Consulting Engineers  
 Rochester, Pennsylvania

Legend	
Property line	—
Edge of pavement or roadway	- - - -
Corporation line	- · - · -
District line	- - - - -
County line	- · - · -
Original lot line	- - - - -
Deed lot number	(15)
Parcel or index number	(99)
Improvement	○
Railroad	—+—

Revisions	
1	4-15-64
2	7-1-67
3	7-1-67
4	6-15-95 J.E.B.
5	SLS INC. 6/26/98 JWM
6	2/22/17 SLS
7	
8	

KEY MAP	
275	276
294 295 296	315

**MCDOWELL COUNTY**  
 STATE OF WEST VIRGINIA  
 Office of Assessor

DISTRICT **ADKIN ELKHORN**  
**SHEET NO: 295**  
 Date, Aerial Photography: April, 1961 Date, Map: July, 1962  
 Photo No: Scale: 1" = 400'