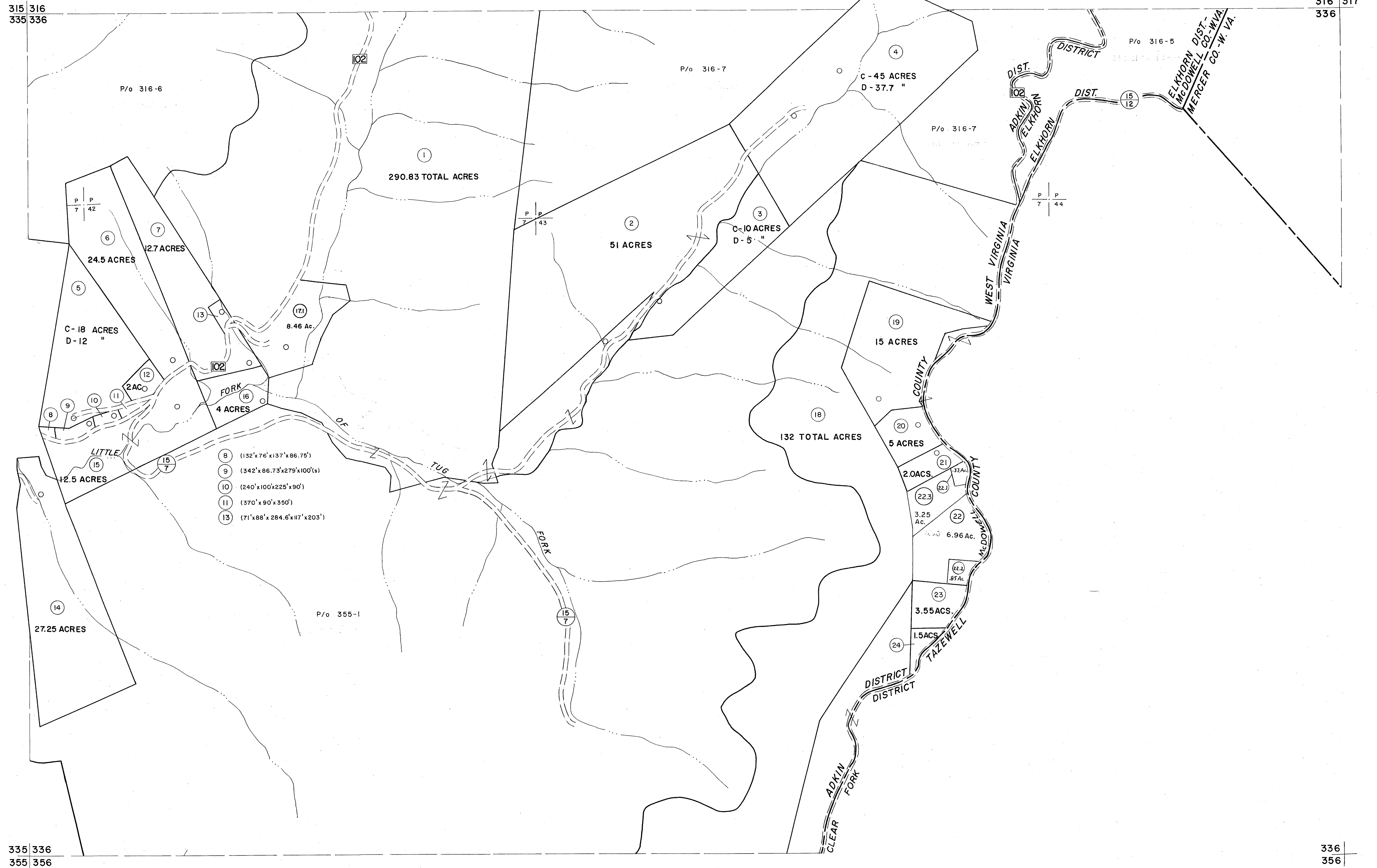


315 316  
335 336

316 317  
336



335 336  
355 356

336  
356

**For Tax Purposes Only**

Prepared by  
**MICHAEL BAKER, JR., INC.**  
Consulting Engineers  
Rochester, Pennsylvania

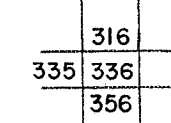
**Legend**

Property line	—	Original lot line	---
Edge of pavement or roadway	—	Deed lot number	(15)
Corporation line	—	Parcel or index number	(19)
District line	—	Improvement	o
County line	—	Railroad	—+—

**Revisions**

1	4-15-64	9	3/2/14	S&H	17
2	12-9-74	10			18
3	REV. TO 7-1-83	11			19
4	1/10/1985	12			20
5	O.G.I.S. 5-15-95	13			21
6	O.G.I.S. 12-1-96	14			22
7	3/28/08	15			23
8		16			24

**KEY MAP**



**McDOWELL COUNTY**  
STATE OF WEST VIRGINIA  
Office of Assessor

**DISTRICT**

**ADKIN**

**SHEET NO: 336**

Date, Aerial Photography: April, 1961  
Photo No: \_\_\_\_\_  
Date, Map: July, 1962  
Scale: 1" = 400'