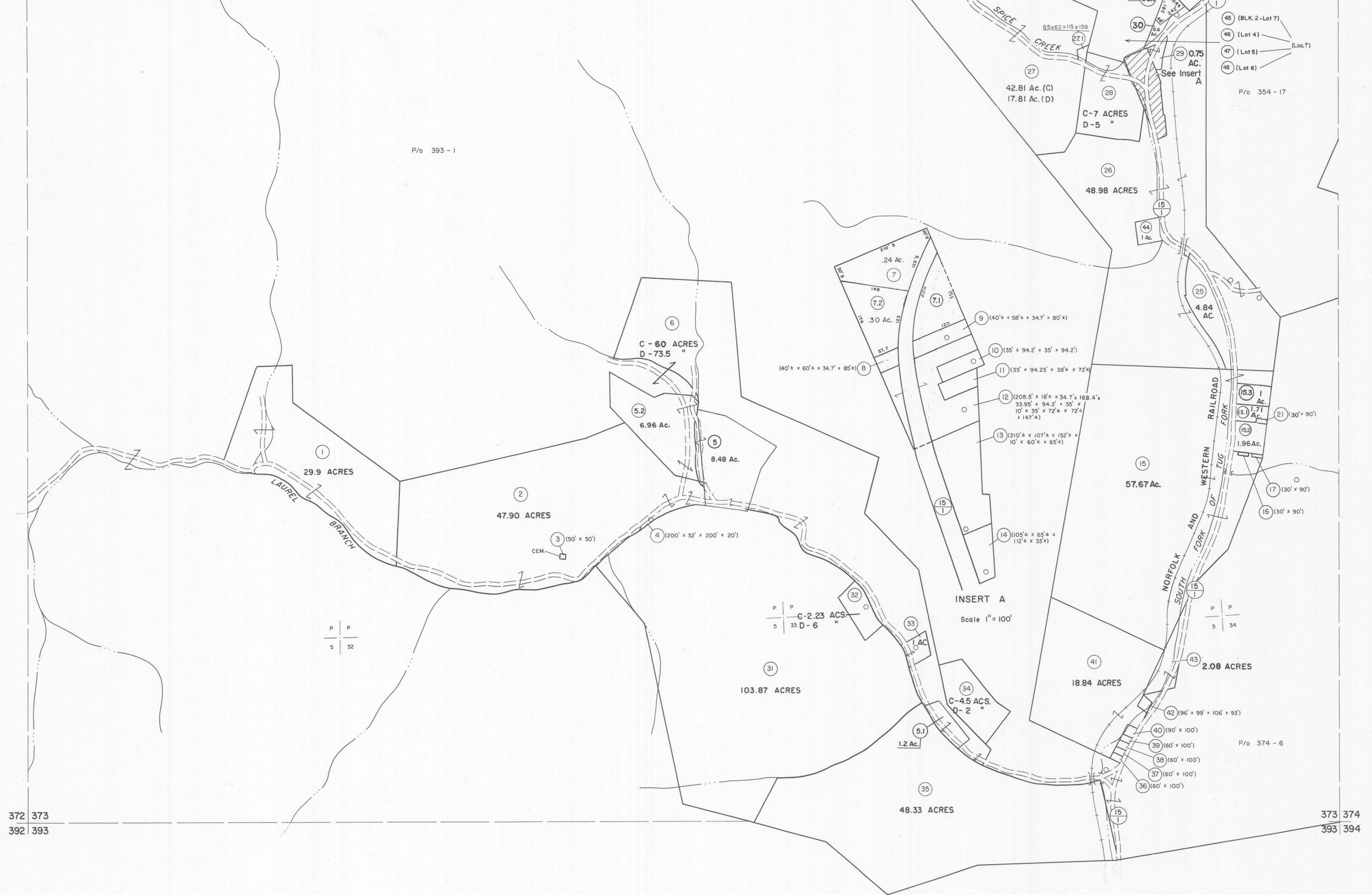


352 353  
372 373

353 354  
373 374



372 373  
392 393

373 374  
393 394

**For Tax Purposes Only**  
 Prepared by  
**MICHAEL BAKER, JR., INC.**  
 Consulting Engineers  
 Rochester, Pennsylvania

Legend	
Property line	Original lot line
Edge of pavement or roadway	Deed lot number
Corporation line	Parcel or index number
District line	Improvement
County line	Railroad

Revisions	
1	4-15-64
2	12-11-74 T.G.
3	To 7-1-1983 C.P.
4	Revised to 7-1-88 J.M.
5	Revised to 7-1-88 J.M.
6	Revised to 7-1-88 J.M.
7	SLS INC. 6/26/98 JWM
8	ES1 4/26/01 REK



**McDOWELL COUNTY**  
 STATE OF WEST VIRGINIA  
 Office of Assessor

DISTRICT  
**ADKIN**  
 SHEET NO: 373  
 Date, Aerial Photography: April, 1961  
 Photo No: \_\_\_\_\_  
 Date, Map: July, 1962  
 Scale: 1" = 400'