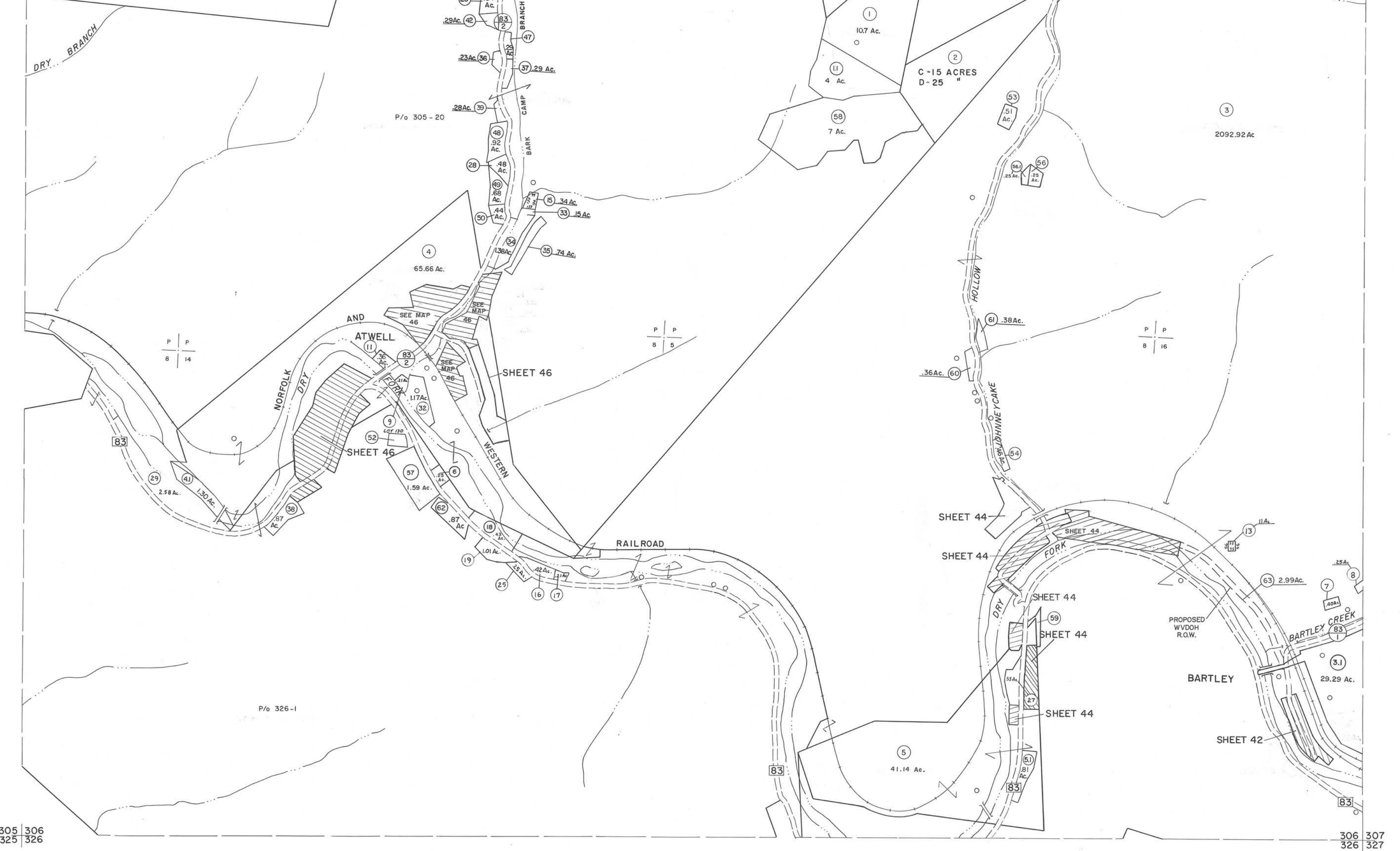


285 286  
305 306

286 287  
306 307



305 306  
325 326

306 307  
326 327

**For Tax Purposes Only**

Prepared by  
**MICHAEL BAKER, JR., INC.**  
Consulting Engineers  
Rochester, Pennsylvania

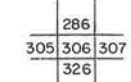
**Legend**

Property line	—	Original lot line	—
Edge of pavement or roadway	—	Deed lot number	(15)
Corporation line	—	Parcel or index number	(P)
District line	—	Improvement	—
County line	—	Railroad	—

**Revisions**

1	4-15-64	9	SLS INC. 1/4/90	DSW	17
2	12-5-74	10	ESI 12/5/02	REK	18
3	July 1983	11	5/23/04	S&H	19
4	July 1983	12	5-15-05	H&S	20
5	Revised to 7-1-88	13	3/28/08	S&H	21
6	Revised to 7-1-89	14	2-1-10	H&S	22
7	O.G.I.S. 5-15-95	15	4/14/12	S&H	23
8	O.G.I.S. 12-1-96	16			24

**KEY MAP**



**McDOWELL COUNTY**  
STATE OF WEST VIRGINIA  
Office of Assessor

**DISTRICT**

**BIG CREEK**

**SHEET NO: 306**

Date, Aerial Photography: April, 1961  
Photo No: \_\_\_\_\_  
Date, Map: July, 1962  
Scale: 1" = 400'