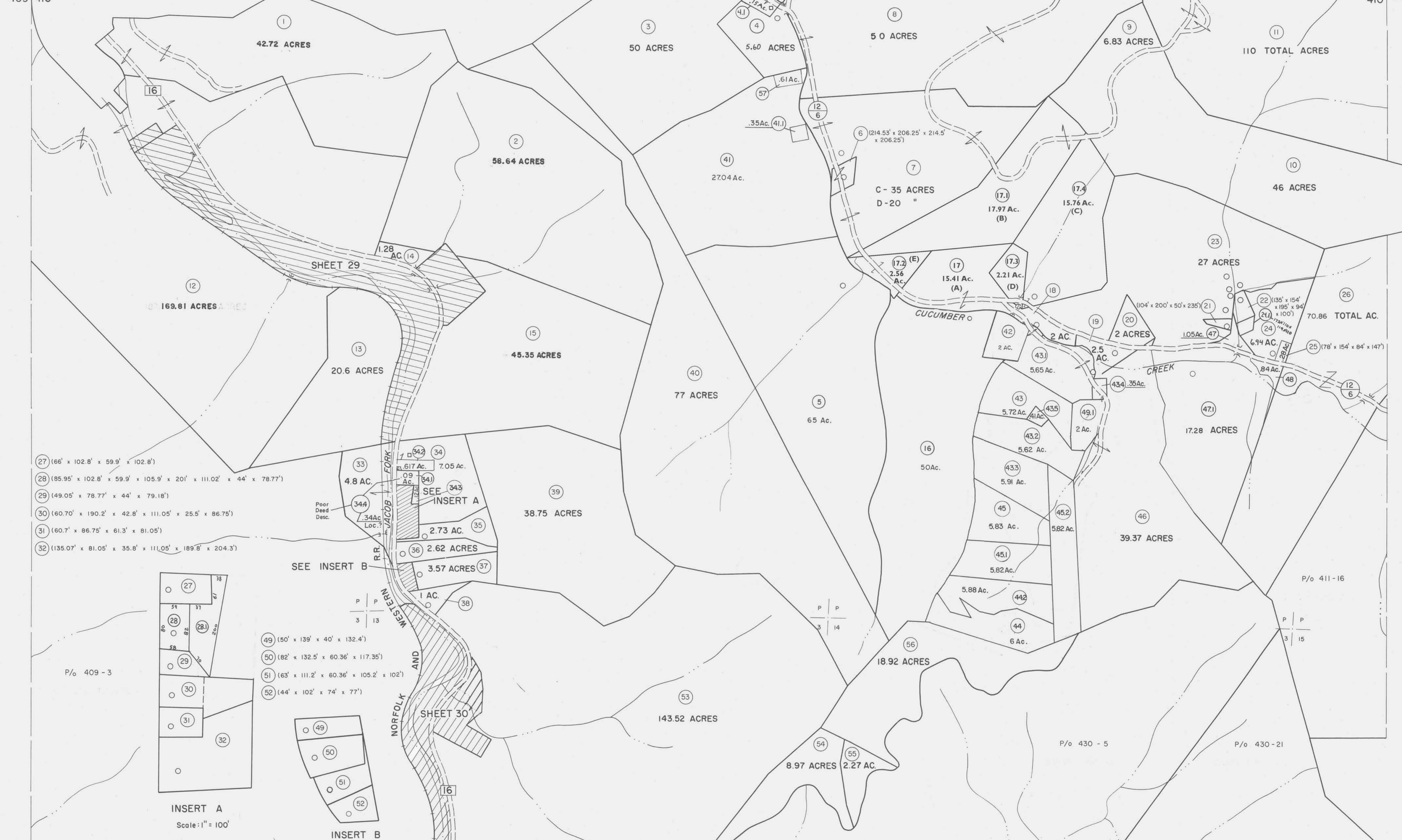


389 390
409 410

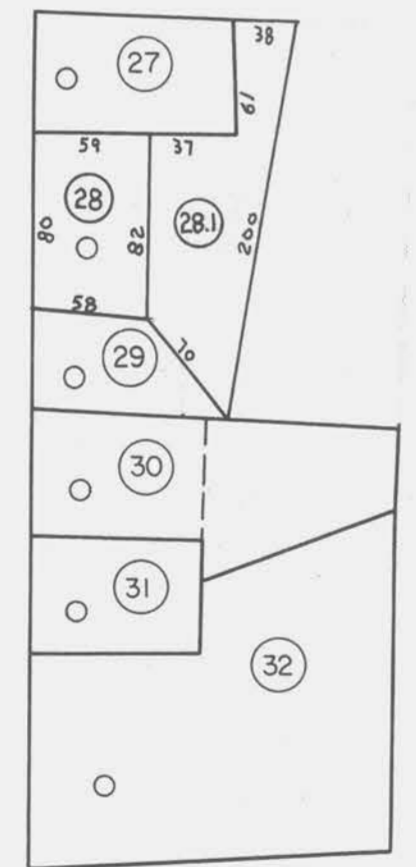
390 391
410 411

409 410
429 430

410 411
430 431

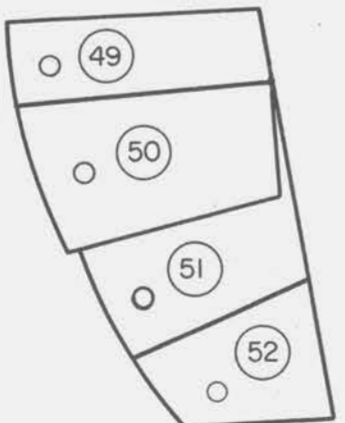


- (27) (66' x 102.8' x 59.9' x 102.8')
- (28) (85.95' x 102.8' x 59.9' x 105.9' x 20' x 111.02' x 44' x 78.77')
- (29) (49.05' x 78.77' x 44' x 79.18')
- (30) (60.70' x 190.2' x 42.8' x 111.05' x 25.5' x 86.75')
- (31) (60.7' x 86.75' x 61.3' x 81.05')
- (32) (135.07' x 81.05' x 35.8' x 111.05' x 189.8' x 204.3')



INSERT A
Scale: 1" = 100'

- (49) (50' x 139' x 40' x 132.4')
- (50) (82' x 132.5' x 60.36' x 117.35')
- (51) (63' x 111.2' x 60.36' x 105.2' x 102')
- (52) (44' x 102' x 74' x 77')



INSERT B
Scale: 1" = 100'

For Tax Purposes Only
 Prepared by
MICHAEL BAKER, JR., INC.
 Consulting Engineers
 Rochester, Pennsylvania

Legend	
Property line	Original lot line
Edge of pavement or roadway	Deed lot number
Corporation line	Parcel or index number
District line	Improvement
County line	Railroad

Revisions	
1 4-15-64	9 ES1 4/26/01 REK 17
2 12-12-74 T.G.	10 5/23/04 S.B.H 18
3 1/16/85	11 2-1-10 H.S. 19
4 1/16/85	12 4/14/12 S.B.H 20
5 Revised to 7-1-80	13 3/2/14 S.B.H 21
6 O.G.I.S 5-15-95 J.E.B	14 3/1/18 NLS 22
7 SLS INC. 6/29/98 J.W.M	15 23
8 SLS INC. 1/06/99 D.S.W	16 24



McDOWELL COUNTY
 STATE OF WEST VIRGINIA
 Office of Assessor

DISTRICT **BIG CREEK**
SHEET NO: 410
 Date, Aerial Photography: April, 1961 Date, Map: July, 1962
 Photo No: Scale: 1" = 400'