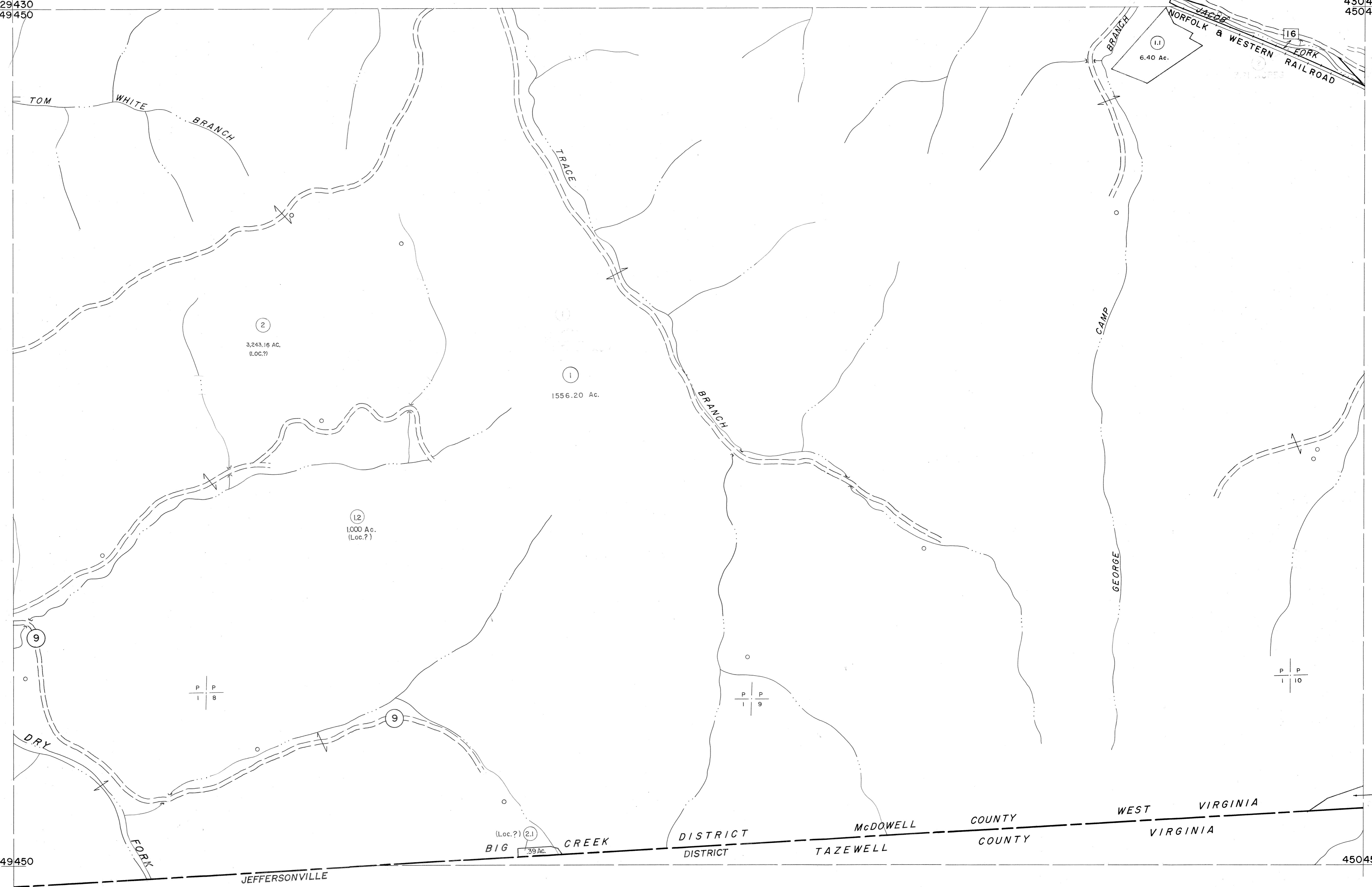


429430  
449450

430431  
450451

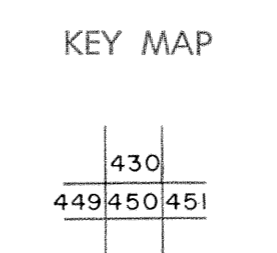


For Tax Purposes Only

Prepared by  
MICHAEL BAKER, JR., INC.  
Consulting Engineers  
Rochester, Pennsylvania

| Legend                      |                        |
|-----------------------------|------------------------|
| Property line               | Original lot line      |
| Edge of pavement or roadway | Deed lot number        |
| Corporation line            | Parcel or index number |
| District line               | Improvement            |
| County line                 | Railroad               |

| Revisions |                         |
|-----------|-------------------------|
| 1         | 4-15-64                 |
| 2         | 12-12-74                |
| 3         | J.E.B. 1983             |
| 4         | J.E.B. 1985             |
| 5         | O.G.I.S. 5-15-95 J.E.B. |
| 6         | O.G.I.S. 12-1-96 J.E.B. |
| 7         | SLS INC. 6/29/98 JWM    |
| 8         | SLS INC. 1/06/99 DSW    |



**McDOWELL COUNTY**  
STATE OF WEST VIRGINIA  
Office of Assessor

DISTRICT **BIG CREEK**

**SHEET NO: 450**

Date, Aerial Photography: April, 1961 Date, Map: July, 1962  
Photo No: Scale: 1" = 400'