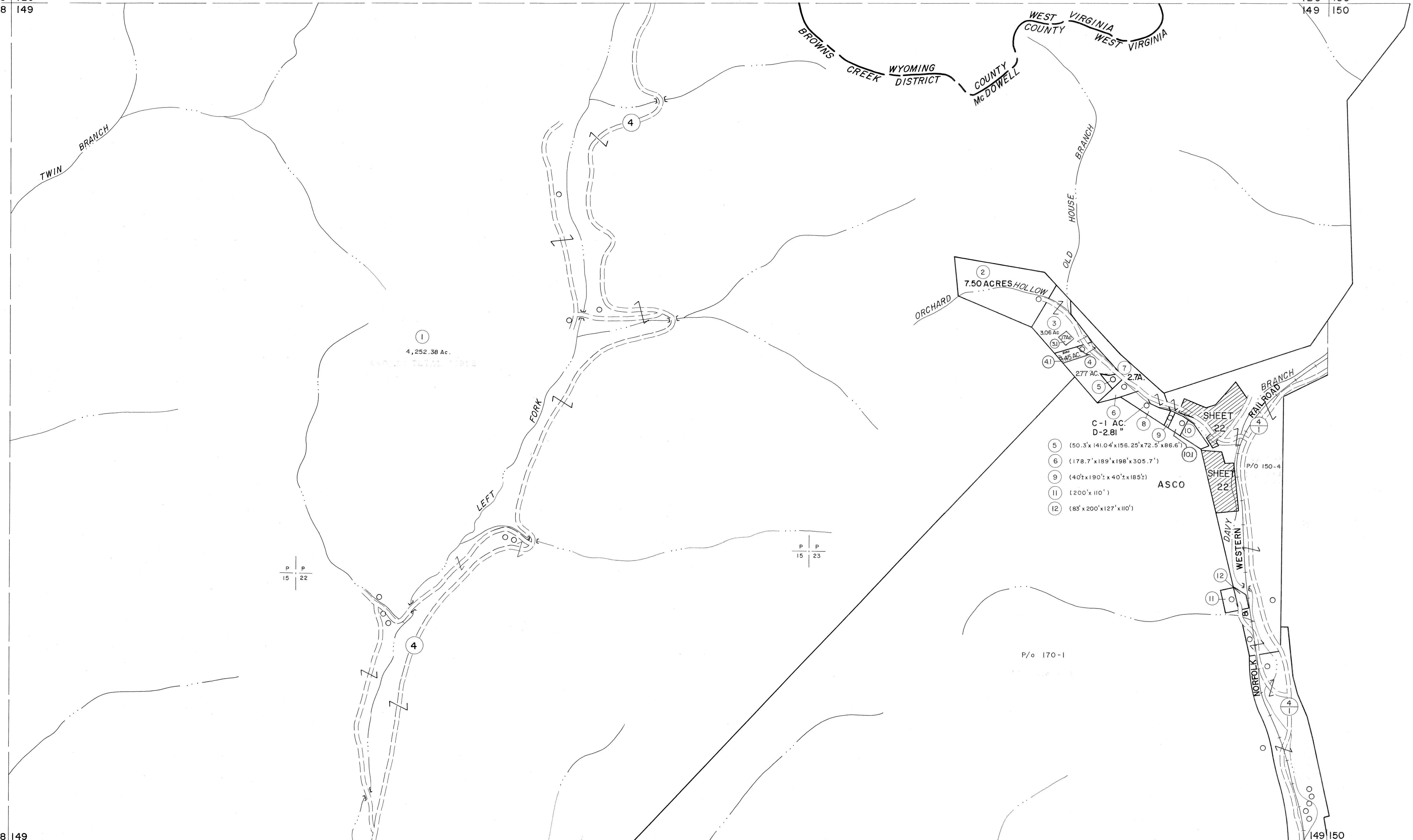


128 129
148 149

129 130
149 150

148 149
168 169

149 150
169 170

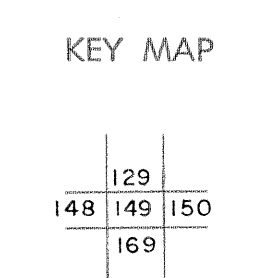


- ⑤ (50.3' x 141.04' x 156.25' x 72.5' x 86.6')
- ⑥ (178.7' x 189' x 198' x 305.7')
- ⑨ (40' x 190' x 40' x 185')
- ⑪ (200' x 110')
- ⑫ (85' x 200' x 127' x 110')

For Tax Purposes Only
 Prepared by
MICHAEL BAKER, JR., INC.
 Consulting Engineers
 Rochester, Pennsylvania

Legend	
Property line	Original lot line
Edge of pavement or roadway	Deed lot number
Corporation line	Parcel or index number
District line	Improvement
County line	Railroad

Revisions			
1	4-15-64		9
2	12-3-74	T.G.	10
3	Revised 7-1-83	J.F.	11
4	July 1985	J.E.B.	12
5	O.G.'S 12-1-96	J.E.B.	13
6	4-4-5	5-15-05	14
7	2-1-10	-H.S.	15
8			16



McDOWELL COUNTY
 STATE OF WEST VIRGINIA
 Office of Assessor

DISTRICT
BROWNS CREEK
 SHEET NO: 149
 Date, Aerial Photography: April, 1961 Date, Map: July, 1962
 Photo No: Scale: 1" = 400'