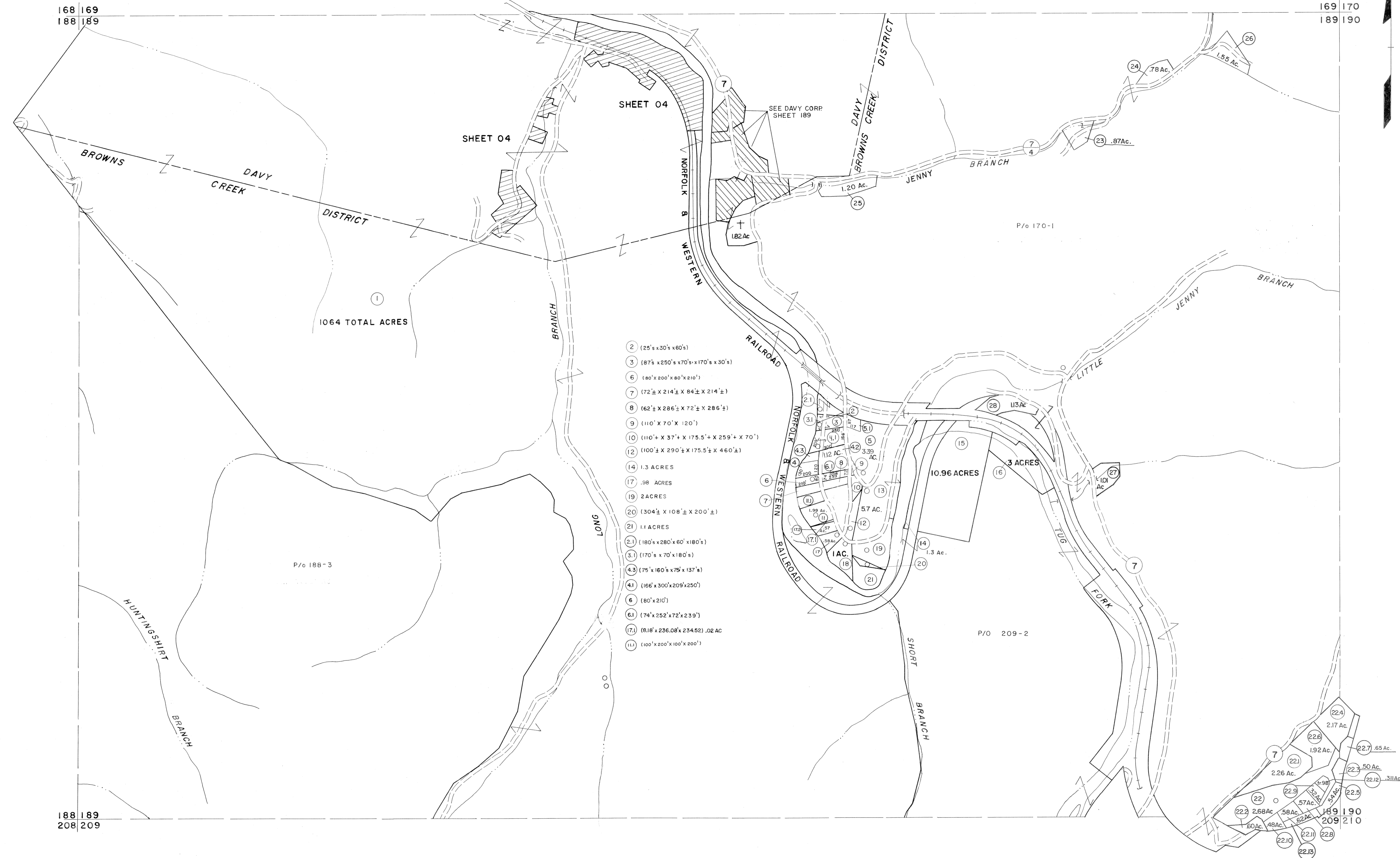


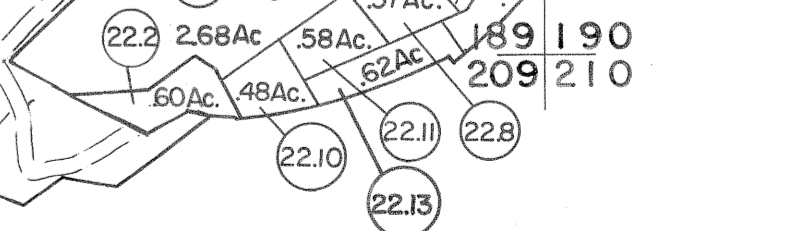
168 169
188 189

169 170
189 190



- 2 (25' x 20' x 60')
- 3 (87' x 250' x 70' x 170' x 30')
- 6 (80' x 200' x 80' x 210')
- 7 (72' x 214' x 84' x 214')
- 8 (62' x 286' x 72' x 286')
- 9 (110' x 70' x 120')
- 10 (110' x 37' x 175.5' x 259' x 70')
- 12 (100' x 290' x 175.5' x 460')
- 14 1.3 ACRES
- 17 .98 ACRES
- 19 2 ACRES
- 20 (304' x 108' x 200')
- 21 1.1 ACRES
- 21 (180' x 280' x 60' x 180')
- 31 (170' x 70' x 180')
- 43 (75' x 180' x 75' x 137')
- 41 (166' x 300' x 209' x 250')
- 6 (80' x 210')
- 61 (74' x 252' x 72' x 239')
- 171 (818' x 236.08' x 234.52) .02 AC
- 111 (100' x 200' x 100' x 200')

188 189
208 209

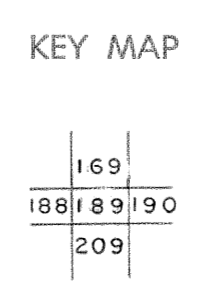


For Tax Purposes Only

Prepared by
MICHAEL BAKER, JR., INC.
Consulting Engineers
Rochester, Pennsylvania

Legend	
Property line	———
Edge of pavement or roadway	———
Corporation line	———
District line	———
County line	———
Original lot line	———
Deed lot number	(15)
Parcel or index number	(22)
Improvement	○
Railroad	———

Revisions	
1 4-15-64	9 ESI 12/4/02 REK 17
2 12-5-74 T.G.	10 5/23/04 S.B.H 18
3 Revised to 7-1-88	11 5-15-05 H.S. 19
4 7/1/84 R.B.	12 S.B.H 12/31/05 20
5 J.E.B.	13 3/28/08 S.B.H 21
6 O.G.I.S 5-15-95 J.E.B	14 2-1-10 H.S. 22
7 O.G.I.S 12-1-96 J.E.B	15 3/18/10 S.B.H 23
8	16



MCDOWELL COUNTY
STATE OF WEST VIRGINIA
Office of Assessor

DISTRICT
BROWNS CREEK

SHEET NO: 189

Date, Aerial Photography: April, 1961 Date, Map: July, 1962
Photo No: Scale: 1" = 400'