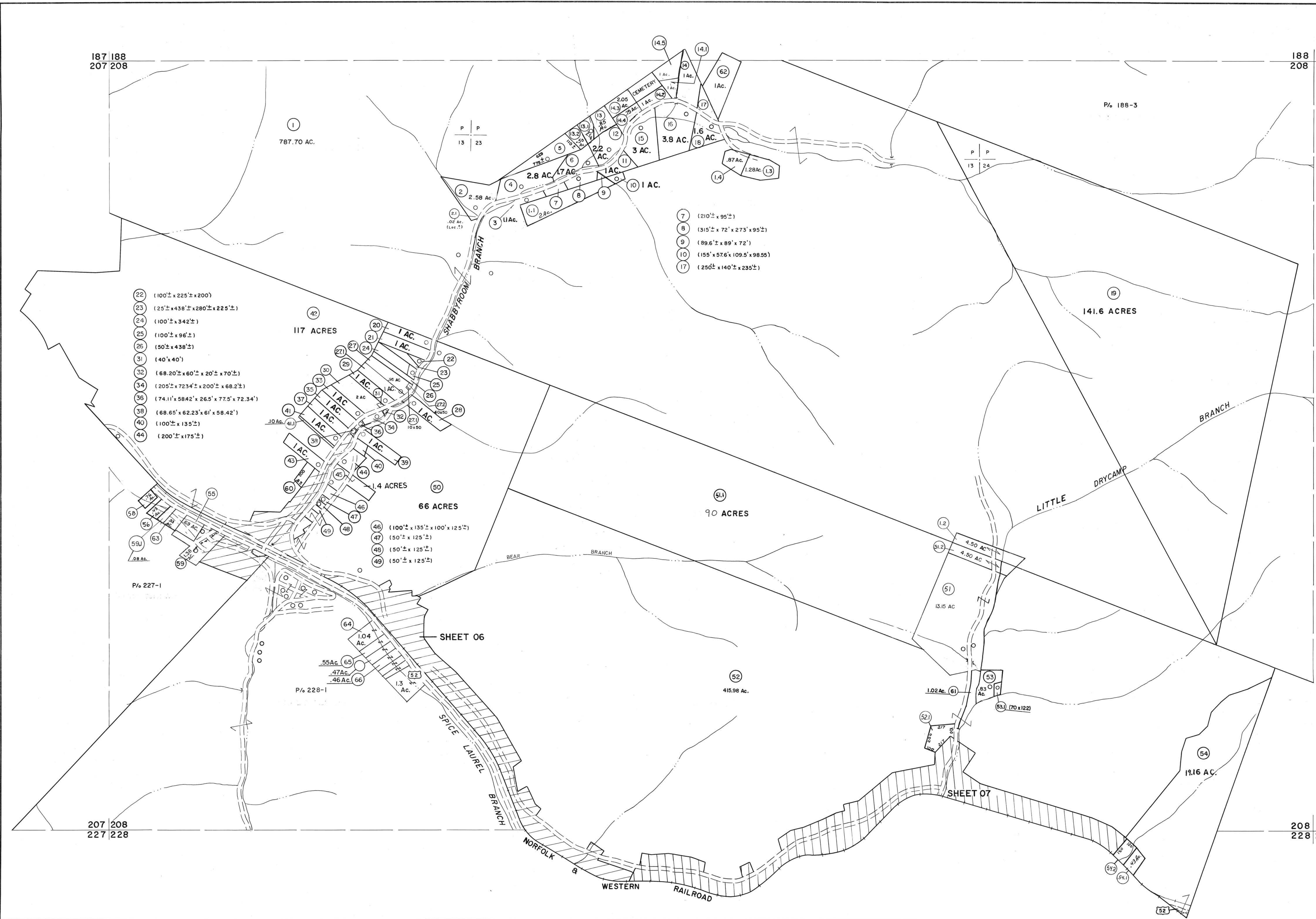


187 188  
207 208

188 189  
208 209



- 22 (100'± x 225'± x 200')
- 23 (25'± x 436'± x 280'± x 225'±)
- 24 (100'± x 342'±)
- 25 (100'± x 96'±)
- 26 (50'± x 438'±)
- 31 (40' x 40')
- 32 (68.20'± x 60'± x 20'± x 70'±)
- 34 (205'± x 723.4'± x 200'± x 68.2'±)
- 36 (74.11' x 584.2' x 26.5' x 77.5' x 72.34')
- 38 (68.65'± x 62.23'± x 61'± x 58.42')
- 40 (100'± x 135'±)
- 44 (200'± x 175'±)

- 7 (210'± x 95'±)
- 8 (315'± x 72'± x 273'± x 95'±)
- 9 (89.6'± x 89'± x 72')
- 10 (155'± x 57.6'± x 109.5'± x 98.55')
- 17 (250'± x 140'± x 235'±)

P/ 227-1

P/ 228-1

207 208  
227 228

208 209  
228 229

For Tax Purposes Only

Prepared by  
MICHAEL BAKER, JR., INC.  
Consulting Engineers  
Rochester, Pennsylvania

Legend	
Property line	Original lot line
Edge of pavement or roadway	Deed lot number (15)
Corporation line	Parcel or index number (29)
District line	Improvement
County line	Railroad

Revisions			
1	4-15-64	9	SLS INC. 6/26/98 JWM 17
2	Rhodes 12-6-74 T.G.	10	ESI 4/24/01 REK 18
3	Revised to 7-1-83	11	4/16/12 S&H 19
4	7/1/84	12	3/2/14 S&H 20
5	Revised to 7-1-88	13	2/24/17 SLS 21
6	Revised to 7-1-88	14	
7	Revised to 7-1-89	15	
8	O.G.I.S 12-1-96 J.E.B.	16	

KEY MAP

**McDOWELL COUNTY**  
STATE OF WEST VIRGINIA  
Office of Assessor

DISTRICT  
**BROWNS CREEK**

**SHEET NO: 208**

Date, Aerial Photography: April, 1961 Date, Map: July, 1962  
Photo No: Scale: 1" = 400'