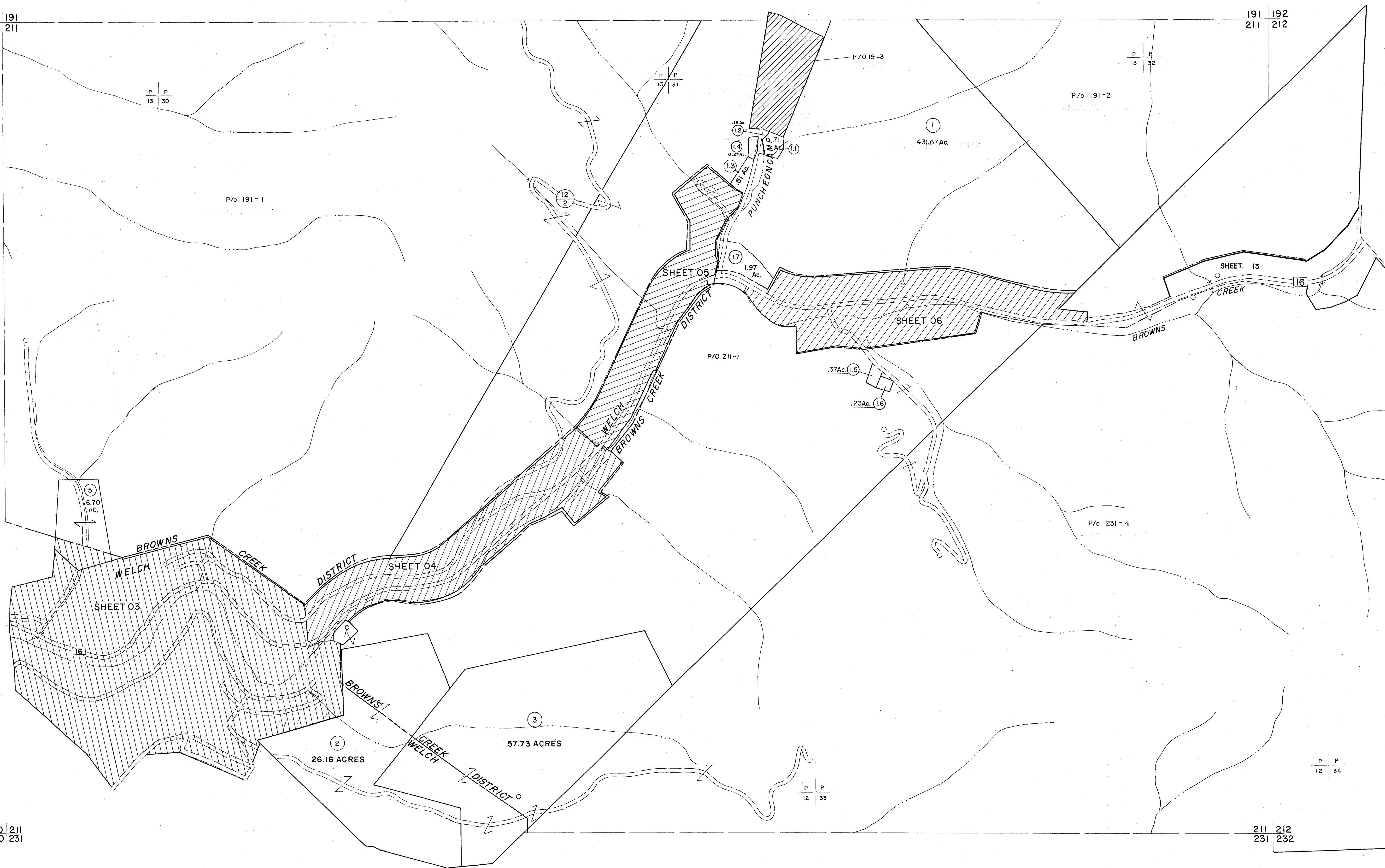


190 | 191
210 | 211

191 | 192
211 | 212

210 | 211
230 | 231

211 | 212
231 | 232



For Tax Purposes Only

Prepared by
MICHAEL BAKER, JR., INC.
Consulting Engineers
Rochester, Pennsylvania

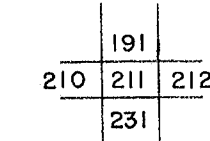
Legend

Property line	—	Original lot line	—
Edge of pavement or roadway	—	Dead lot number	(15)
Corporation line	—	Parcel or index number	(16)
District line	—	Improvement	o
County line	—	Railroad	—

Revisions

No.	Date	By	Check	Revised
1	4-15-64	ESJ	4/24/01	REK
2	12-6-74	T.G.	4/16/12	S&H
3	Revised to 7-1-85	J.E.B.	3/2/14	S&H
4	10-1-85	J.E.B.		
5	Revised to 7-1-85	J.E.B.		
6	O.G.I.S 5-15-95	J.E.B.		
7	SLS INC. 6/25/98	JWM		
8	SLS INC. 12/30/98	DSW		

KEY MAP



McDOWELL COUNTY
STATE OF WEST VIRGINIA
Office of Assessor

DISTRICT
BROWNS CREEK-WELCH

SHEET NO: 211

Date, Aerial Photography: April, 1961 Date, Map: July, 1962
Photo No: Scale: 1" = 400'