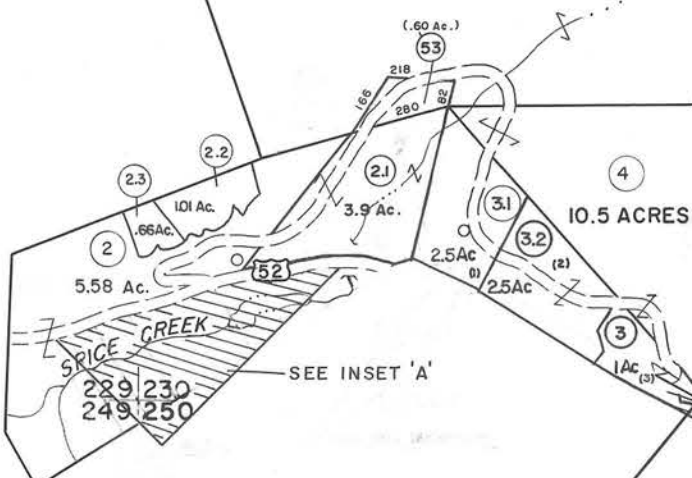
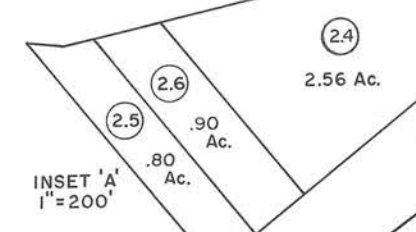
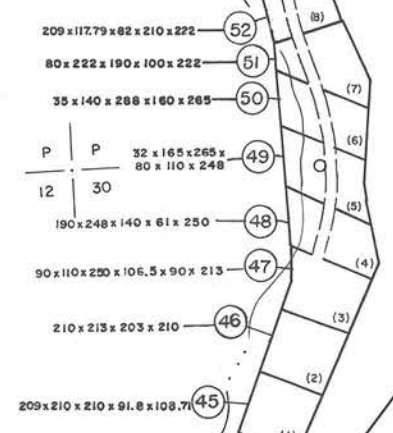
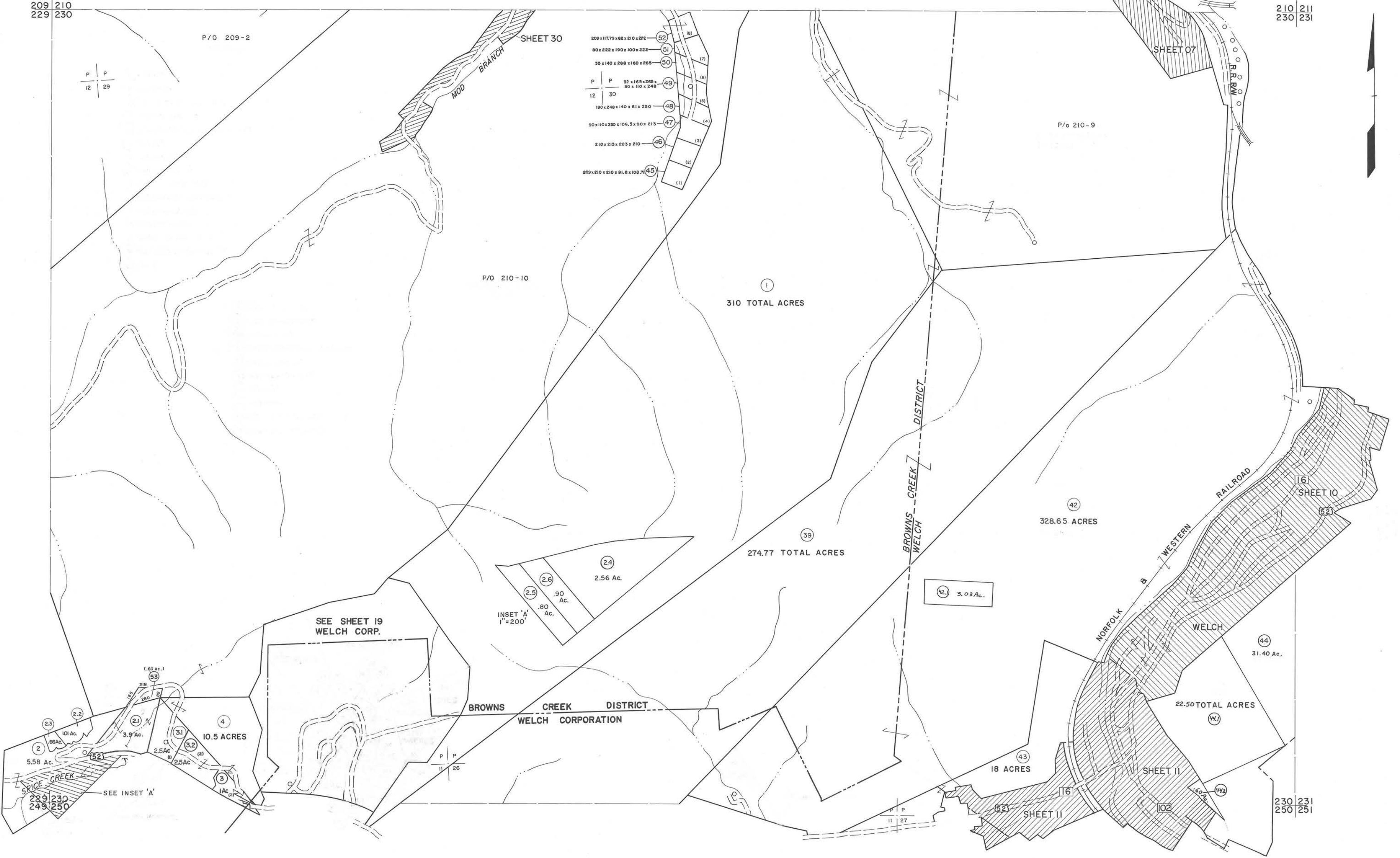
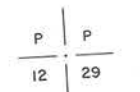


209 210
229 230

210 211
230 231



For Tax Purposes Only
Prepared by
MICHAEL BAKER, JR., INC.
Consulting Engineers
Rochester, Pennsylvania

| Legend | |
|-----------------------------|------|
| Property line | — |
| Edge of pavement or roadway | — |
| Corporation line | — |
| District line | — |
| County line | — |
| Original lot line | — |
| Deed lot number | (15) |
| Parcel or index number | (29) |
| Improvement | ○ |
| Railroad | — |

| Revisions | |
|-----------|--------------------------|
| 1 | 4-15-64 |
| 2 | 12-9-74 T.G. |
| 3 | Revised to 7-1-88 J.E.B. |
| 4 | July 1985 J.E.B. |
| 5 | Revised to 7-1-88 J.E.B. |
| 6 | O.G.I.S 5-15-95 J.E.B. |
| 7 | ESI 4/26/01 REK |
| 8 | 2-1-10 H.S. |



McDOWELL COUNTY
STATE OF WEST VIRGINIA
Office of Assessor

DISTRICT BROWNS CREEK WELCH
SHEET NO: 230
Date, Aerial Photography: April, 1961
Photo No:
Date, Map: July, 1962
Scale: 1" = 400'