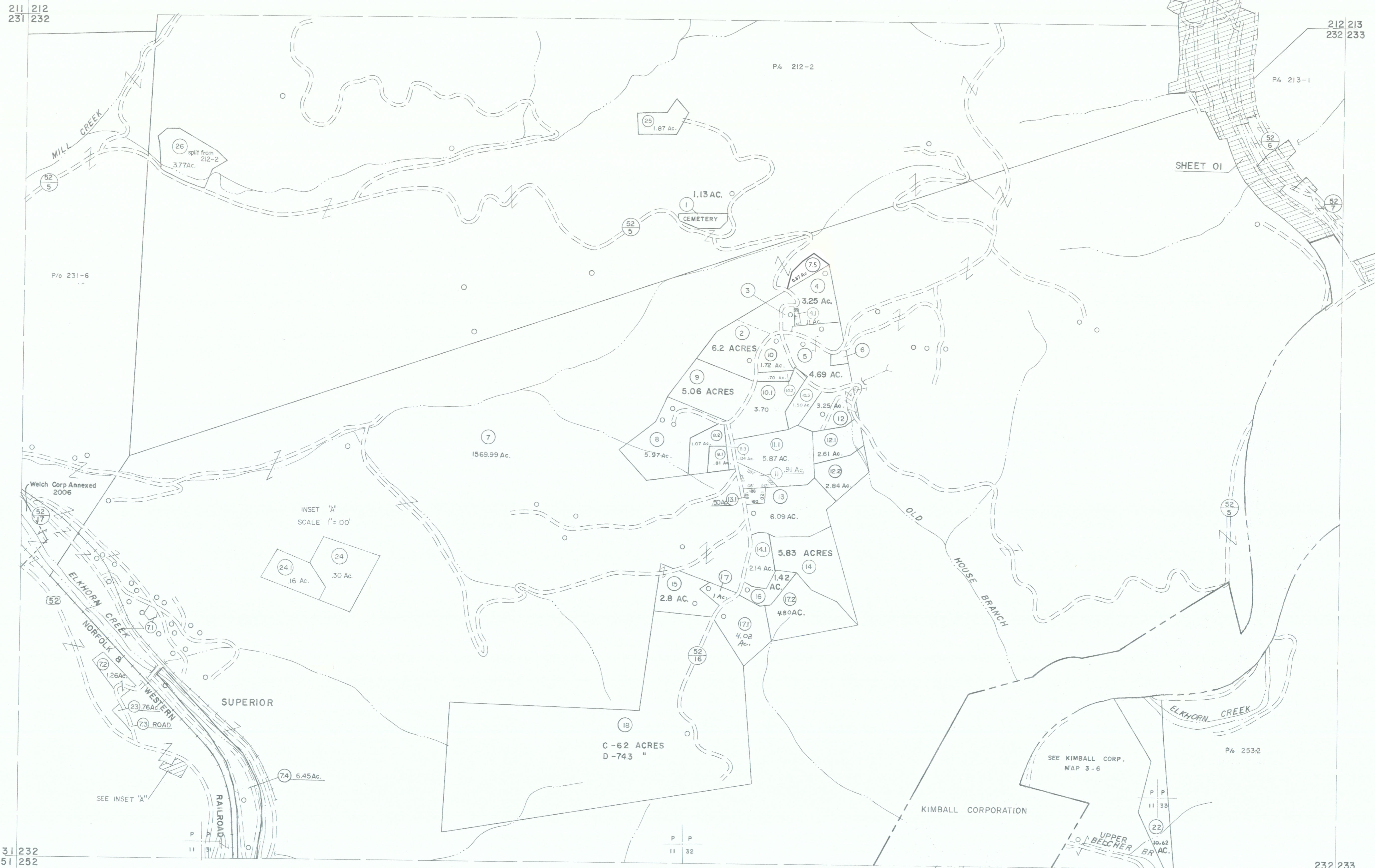


- 3 (101' x 45' x 100' x 165' x 13' x 25')
- 6 (81.1' x 51.7' x 111.7' x 114')
- 19 (135.9 x 107.35' x 65.36' x 181.47')
- 21 (120' ± x 56' ± x 104' ±)
- 71 (57.5 x 31.9 x 30.4 x 74 x 72.9 x 76.7) .19 AC.

211 212
231 232

212 213
232 233



231 232
251 252

232 233
252 253

For Tax Purposes Only

Prepared by
MICHAEL BAKER, JR., INC.
Consulting Engineers
Rochester, Pennsylvania

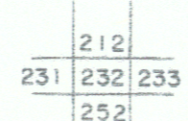
Legend

Property line	—	Original lot line	—
Edge of pavement or roadway	—	Deed lot number	(15)
Corporation line	—	Parcel or index number	(19)
District line	—	Improvement	(O)
County line	—	Railroad	—

Revisions

1	4-15-64	9	ESI	12/4/02	REK	17
2	12-9-74	10	5/23/04	SBH	18	
3	Revised to 7-1-89	11	5-15-05	HAS	19	
4	7-1-89	12	4-18-07	HAS	20	
5	O.G.H.S. 5-15-95	13	3/28/08	SBH	21	
6	O.G.J.S. 12-1-96	14	3/1/17	SLS	22	
7	SLS INC. 12/30/98	15	3/18/19	DGS	23	
8		16			24	

KEY MAP



McDOWELL COUNTY
STATE OF WEST VIRGINIA
Office of Assessor

DISTRICT

BROWNS CREEK

SHEET NO: 232

Date, Aerial Photography: April, 1961 Date, Map: July, 1962
Photo No: Scale: 1" = 400'