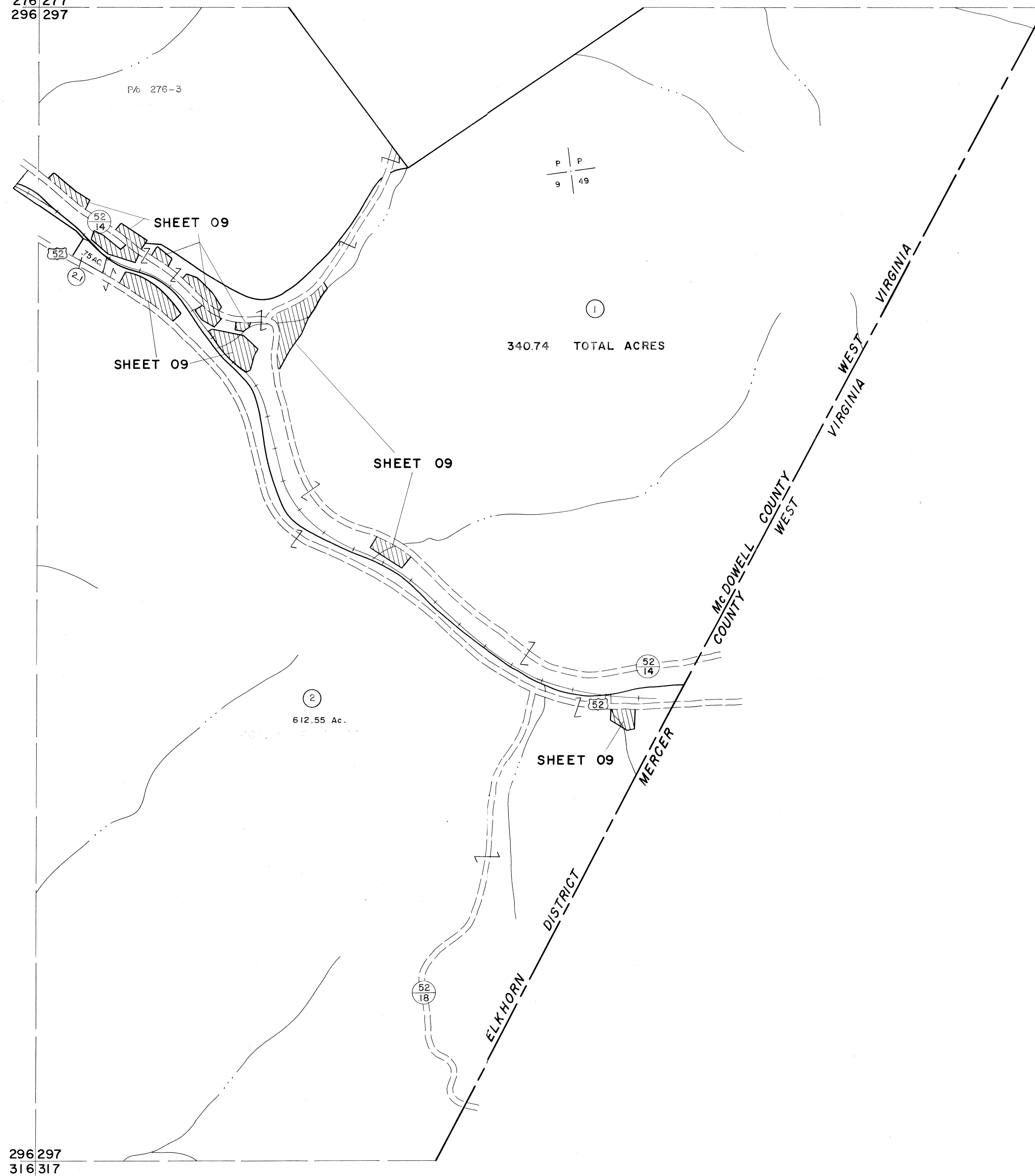


276 277  
296 297

277  
297



296 297  
316 317

297  
317

**For Tax Purposes Only**

Prepared by  
**MICHAEL BAKER, JR., INC.**  
Consulting Engineers  
Rochester, Pennsylvania

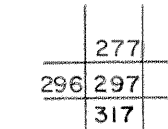
**Legend**

Property line	—————	Original lot line	-----
Edge of pavement or roadway	-----	Deed lot number	(15)
Corporation line	-----	Parcel or index number	(99)
District line	-----	Improvement	O
County line	-----	Railroad	+++++

**Revisions**

1	4-15-64	9	17
2	REV. TO 7-1-83	NCS	18
3	July 1985	J.E.B.	19
4	K.G.I.S. 12-1-96	J.E.B.	20
5			21
6			22
7			23
8			24

**KEY MAP**



**McDOWELL COUNTY**  
STATE OF WEST VIRGINIA  
Office of Assessor

**DISTRICT**

**ELKHORN**

**SHEET NO: 297**

Date, Aerial Photography: APRIL, 1961 Date, Map: JULY, 1961  
Photo No: Scale: 1" = 400'