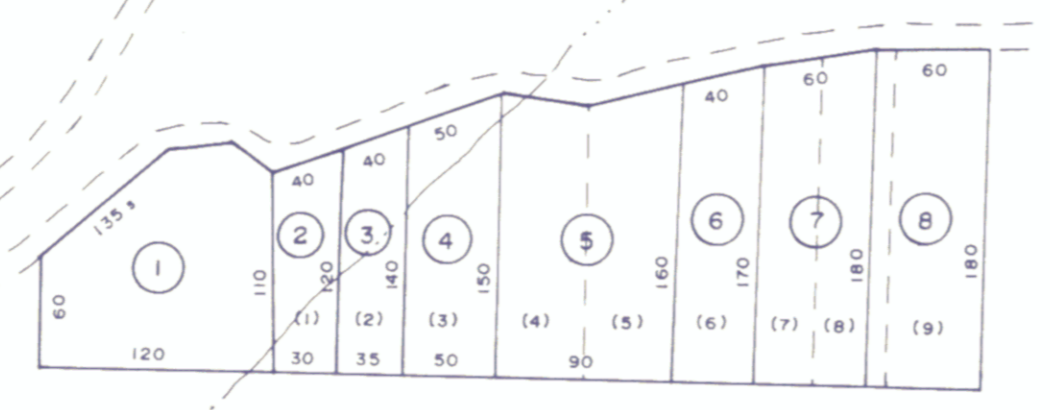


SEE MAP 6 IAEGEER CORP.

P/O 185 - 10
SANDY RIVER DISTRICT



9
90 Ac.

P/O
1-166

P/O
1-165

SEE MAP
1-

NORFOLK
AND
WESTERN
R.R.

DRY
FORK
OF
TUG
RIVER

11
1.44 Ac.

12
1 Ac.

14
2.04 Ac.

10

P/O 204-7
SANDY RIVER DISTRICT

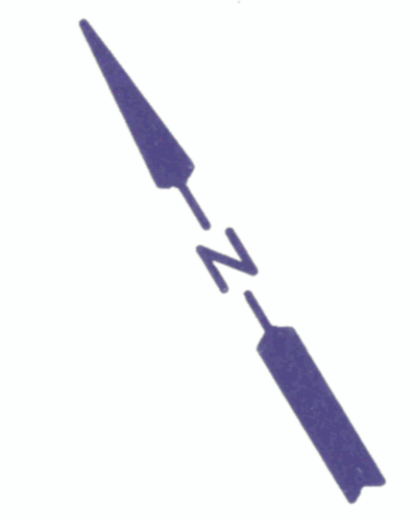
P/O 205-21
SANDY RIVER DISTRICT

SEE MAP 184
SANDY RIVER DISTRICT

CORPORATION
DISTRICT

SEE MAP - 204
SANDY RIVER DISTRICT

SEE MAP 204
SANDY RIVER DISTRICT



Scanned By 305
Date 2-20-19

For Tax Purposes Only

Prepared by
Oil & Gas Information Service
P.O. Box 3810
Charleston, WV 25338

LEGEND

Property line	—	Original lot line	- - - -
Edge of pavement or roadway	—	Deep lot number	15
Corporation line	- - - -	Parcel or index number	⊙
District line	- - - -	Improvement	○
County line	- - - -	Railroad	—
State line	- - - -	Scaled dimension	S
Land mark	•	Deep dimension	D
Water	~ ~ ~ ~	Calculated area	C

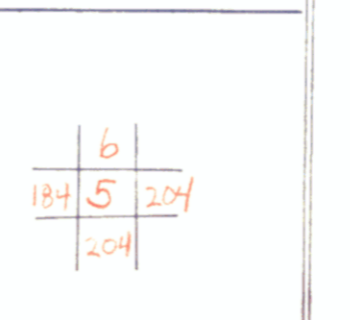
REVISIONS

New Map O.G.I.S.S-15-95 J.E.B	
5/15/2019	DGS

RESTRICTION

--	--

KEY MAP



McDOWELL COUNTY
STATE OF WEST VIRGINIA
Office Of Assessor

DISTRICT:

IAEGEER CORP.
SHEET NO. 5

Date, Aerial Photography
Photo No.

Date Map 7-14-93
Scale 1" = 100'