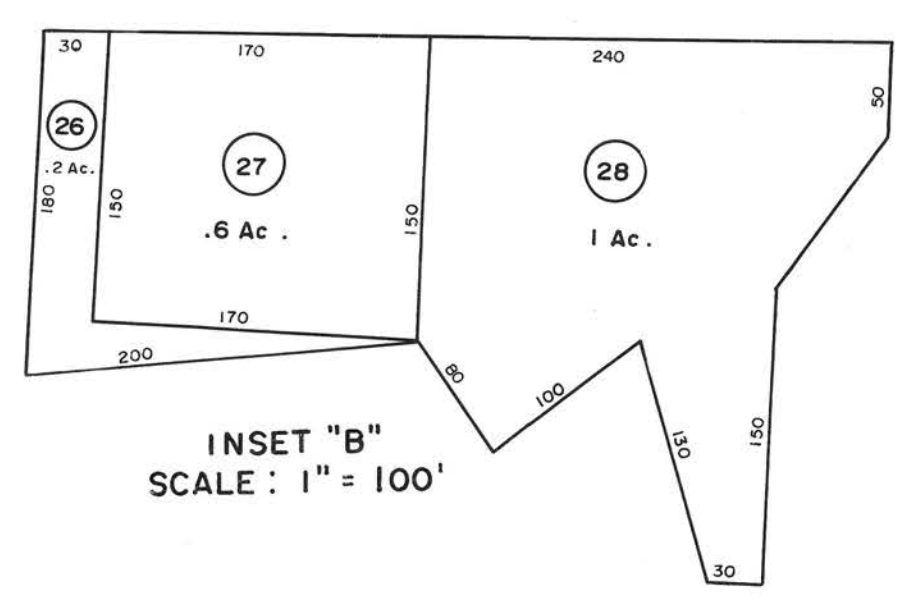
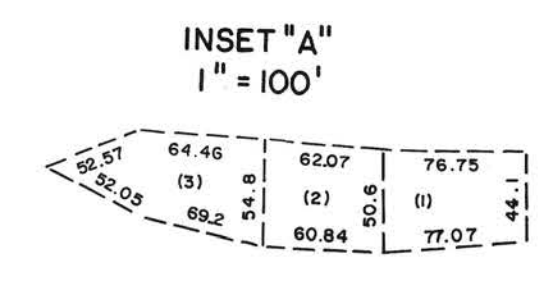
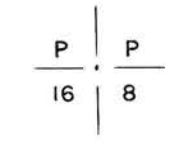
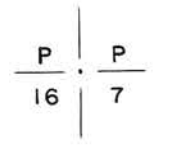
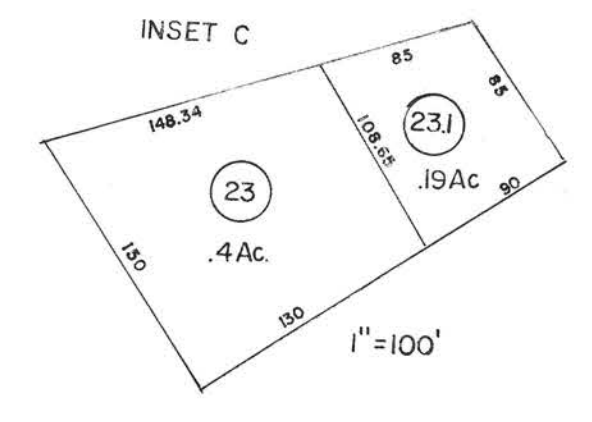
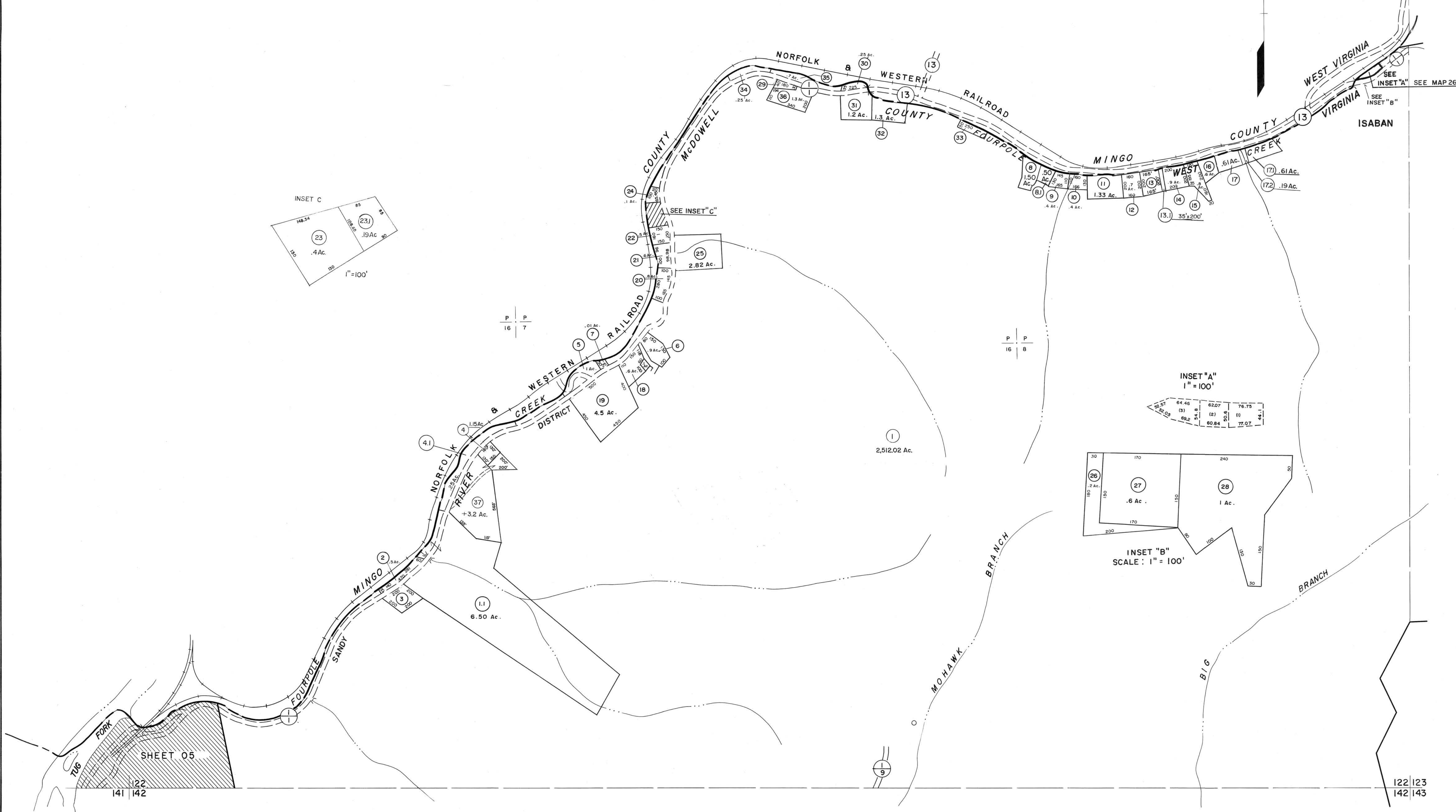


122

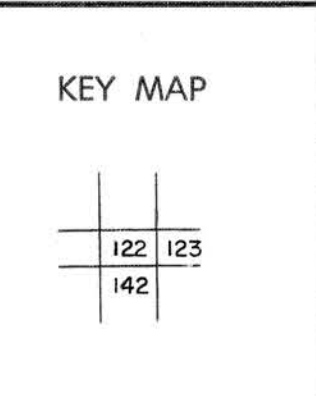
103
122 123



For Tax Purposes Only
Prepared by
MICHAEL BAKER, JR., INC.
Consulting Engineers
Rochester, Pennsylvania

Legend	
Property line	Original lot line
Edge of pavement or roadway	Deed lot number
Corporation line	Parcel or index number
District line	Improvement
County line	Railroad

Revisions			
1	4-15-64	9	8/27/06
2	Revised 7-1-88	10	4/14/12
3	July 1988	11	3/2/14
4	Revised 6-1-86	12	2/27/17
5	O.G.I.S. 12-1-96	13	
6	SLS INC. 6/22/98	14	
7	SLS INC. 12/29/98	15	
8	5/24/04	16	



McDOWELL COUNTY
STATE OF WEST VIRGINIA
Office of Assessor

DISTRICT
SANDY RIVER
SHEET NO: 122
Date, Aerial Photography: April, 1961 Date, Map: July, 1962
Photo No: Scale: 1" = 400'