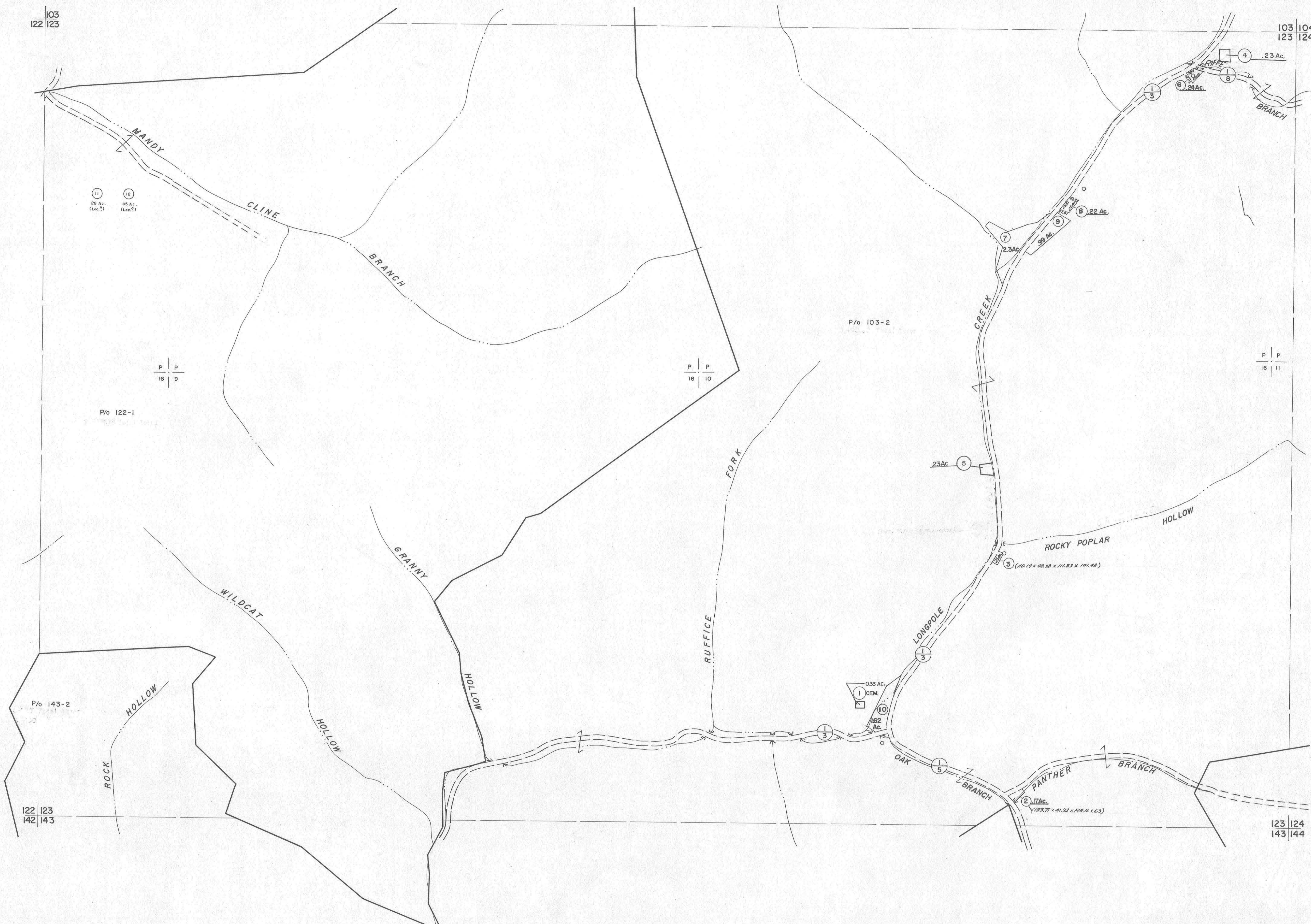


103  
122 123

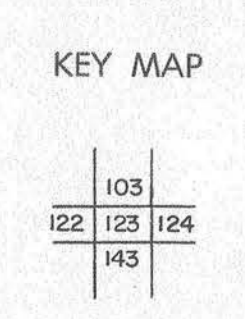
103 104  
123 124



For Tax Purposes Only  
 Prepared by  
**MICHAEL BAKER, JR., INC.**  
 Consulting Engineers  
 Rochester, Pennsylvania

Legend	
Property line	—
Edge of pavement or roadway	—
Corporation line	—
District line	—
County line	—
Original lot line	(15)
Deed lot number	(16)
Parcel or index number	(17)
Improvement	(18)
Railroad	(19)

Revisions	
1	4-15-64
2	7-1-68
3	11-1-68
4	5-15-95
5	12-1-96
6	2-7-10
7	2/27/17
8	
9	
10	
11	
12	
13	
14	
15	
16	



**McDOWELL COUNTY**  
 STATE OF WEST VIRGINIA  
 Office of Assessor

DISTRICT  
**SANDY RIVER**  
 SHEET NO: 123  
 Date, Aerial Photography: April, 1961  
 Date, Map: July, 1962  
 Photo No: \_\_\_\_\_  
 Scale: 1" = 400'