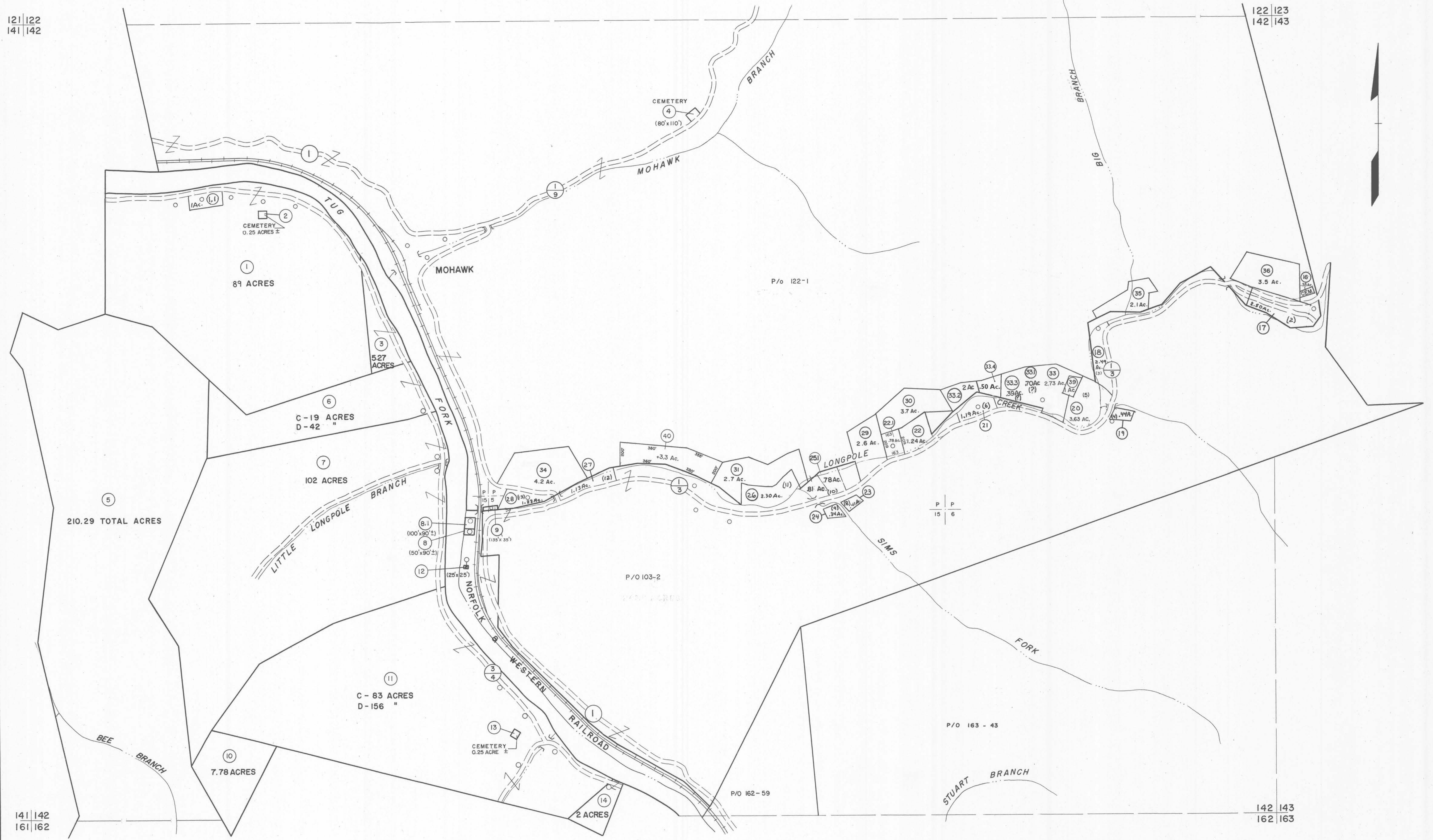


121 | 122
141 | 142

122 | 123
142 | 143

141 | 142
161 | 162

142 | 143
162 | 163

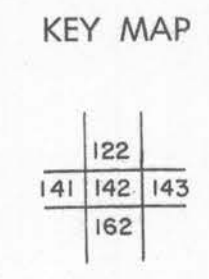


For Tax Purposes Only

Prepared by
MICHAEL BAKER, JR., INC.
Consulting Engineers
Rochester, Pennsylvania

Legend	
Property line	Original lot line
Edge of pavement or roadway	Dead lot number
Corporation line	Parcel or index number
District line	Improvement
County line	Railroad

Revisions	
1	4-15-64
2	12-3-74 T.C.
3	Revised to 7-1-83
4	July 1988
5	O.G.I.S 5-15-95 J.E.B
6	O.G.I.S 12-1-96 J.E.B
7	SLS INC. 6/22/98 DSW
8	



McDOWELL COUNTY
STATE OF WEST VIRGINIA
Office of Assessor

DISTRICT **SANDY RIVER**

SHEET NO: 142

Date, Aerial Photography: April, 1961 Date, Map: July 1962
Photo No: Scale: 1" = 400'