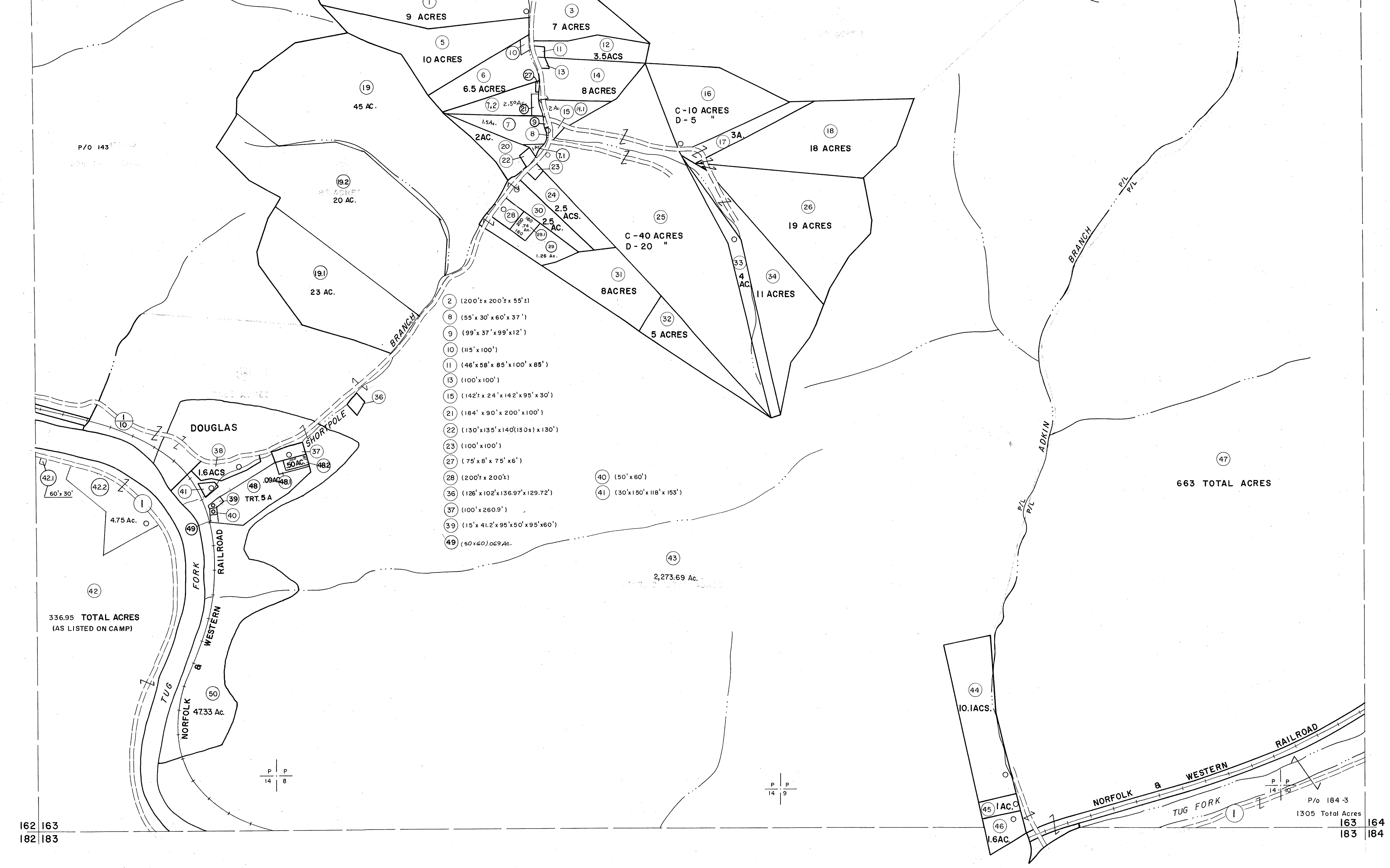
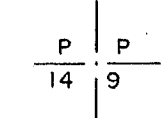
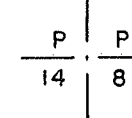


142 143
162 163

143 144
163 164



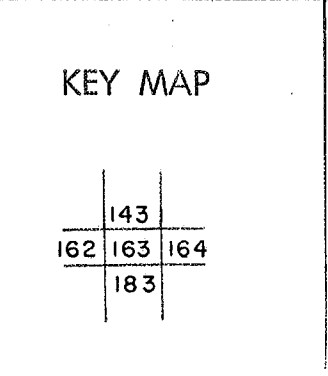
- 2 (200'± x 200'± x 55'±)
- 8 (55' x 30' x 60' x 37')
- 9 (99' x 37' x 99' x 12')
- 10 (115' x 100')
- 11 (46' x 58' x 85' x 100' x 85')
- 13 (100' x 100')
- 15 (142' x 24' x 142' x 95' x 30')
- 21 (184' x 90' x 200' x 100')
- 22 (130' x 135' x 140' (130s) x 130')
- 23 (100' x 100')
- 27 (75' x 8' x 75' x 6')
- 28 (200'± x 200'±)
- 36 (126' x 102' x 136.97' x 129.72')
- 37 (100' x 260.9')
- 39 (15' x 41.2' x 95' x 50' x 95' x 60')
- 49 (60' x 60') 0.69 Ac.
- 40 (50' x 60')
- 41 (30' x 150' x 118' x 153')



For Tax Purposes Only
 Prepared by
MICHAEL BAKER, JR., INC.
 Consulting Engineers
 Rochester, Pennsylvania

Legend	
Property line	—
Edge of pavement or roadway	—
Corporation line	—
District line	—
County line	—
Original lot line	—
Deed lot number	(15)
Parcel or index number	(99)
Improvement	o
Railroad	—

Revisions	
1	4-15-64
2	12-4-74
3	5-15-95
4	5-15-95
5	5-15-95
6	12/4/02
7	5/24/04
8	2-7-10



MCDOWELL COUNTY
 STATE OF WEST VIRGINIA
 Office of Assessor

DISTRICT
SANDY RIVER
 SHEET NO: 163
 Date, Aerial Photography: April, 1961 Date, Map: July, 1962
 Photo No: Scale: 1" = 400'