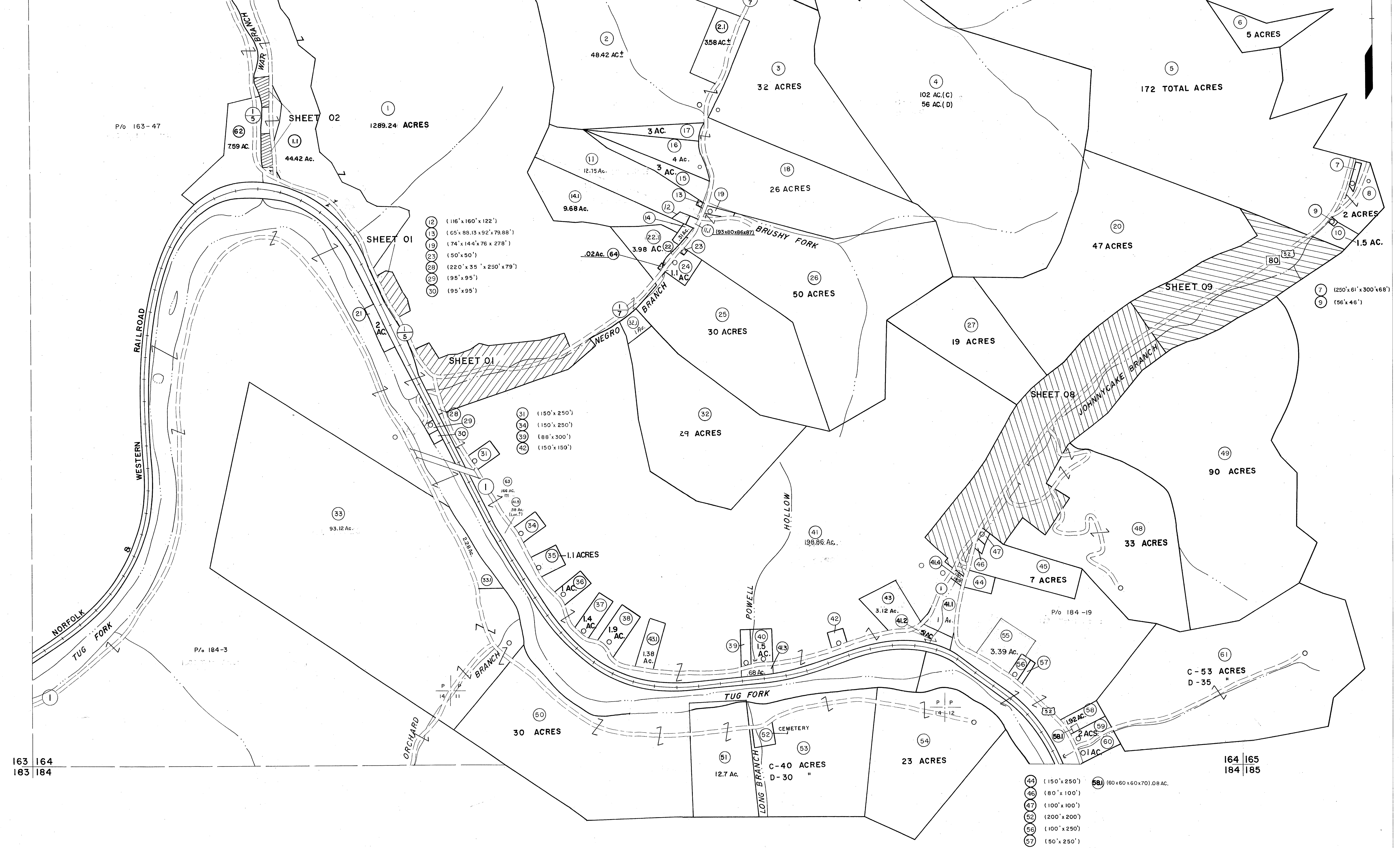


143 | 144
163 | 164

144 | 145
164 | 165



163 | 164
183 | 184

164 | 165
184 | 185

For Tax Purposes Only

Prepared by
MICHAEL BAKER, JR., INC.
Consulting Engineers
Rochester, Pennsylvania

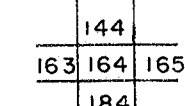
Legend

Property line	---	Original lot line	---
Edge of pavement or roadway	---	Deed lot number	(15)
Corporation line	---	Parcel or index number	(99)
District line	---	Improvement	o
County line	---	Railroad	---

Revisions

1	4-15-64	9	O.G.I.S	12-1-96	J.E.B	17	3/2/14	S.B.H
2	12-4-74	10	SLS INC.	6/22/98	DSW	18		
3	Revised to 7-1-83	11	SLS INC.	12/29/98	DSW	19		
4	7-1-84	12	ESI	4/24/01	REK	20		
5	July, 1988	13		5/24/04	S.B.H	21		
6	Revised to 7-1-88	14		5-15-05	H.L.S	22		
7	Revised to 7-1-87	15	S.B.H	12/31/05		23		
8	O.G.I.S	16		4/14/12	S.H	24		

KEY MAP



McDOWELL COUNTY
STATE OF WEST VIRGINIA
Office of Assessor

DISTRICT

SANDY RIVER

SHEET NO: 164

Date, Aerial Photography: April, 1961 Date, Map: July, 1962
Photo No: Scale: 1" = 400'