

145 146
165 166

146 147
166 167

P/O 165-36

P/O 4
5.16 AC.

15 ACRES

2 ACS. O

3.43 AC. O

1.57 AC

2.1

2.34 AC

5.16 AC

3x100

65x100x35x106

BRANCH

HUFF

SANDY

8
506.74 ACRES

6 3 ACRES

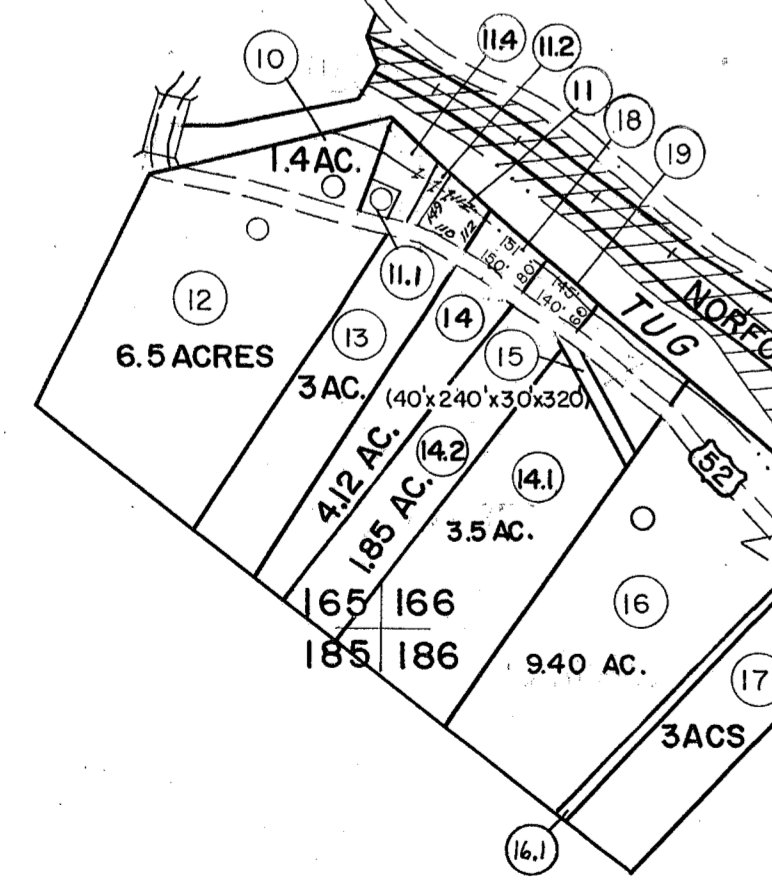
7 3 ACRES

RIGHT FORK

9
3454.77 Ac.

9.1
2 Ac.
(Loc.?)

- (11) (140 x 80 x 120 x 80)
- (12) (20's x 155's x 30's x 149's)
- (14) (.35 Ac² Cont.)



P P
14 16

P P
14 17

166 167
186 187

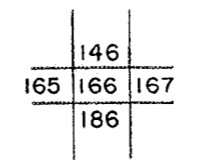
Legend

Property line	—	Original lot line	—
Edge of pavement or roadway	—	Deed lot number	(15)
Corporation line	—	Parcel or index number	(16)
District line	—	Improvement	o
County line	—	Railroad	—

Revisions

1	4-15-64	9	ESI	12/4/02	REK	17
2	12-4-74	10	S&H	8/27/06		18
3	Revised to 7-1-84	11		3/2/14	S&H	19
4	7-1-84	12	L.E.S.			20
5	7-1-84	13				21
6	6.6.1.5 5-15-95	14	J.E.B.			22
7	SLS INC. 6/23/98	15	JWM			23
8		16				24

KEY MAP



For Tax Purposes Only

Prepared by
MICHAEL BAKER, JR., INC.
Consulting Engineers
Rochester, Pennsylvania

McDOWELL COUNTY
STATE OF WEST VIRGINIA
Office of Assessor

DISTRICT
SANDY RIVER

SHEET NO: 166

Date, Aerial Photography: April, 1961 Date, Map: July, 1962
Photo No: Scale: 1" = 400'