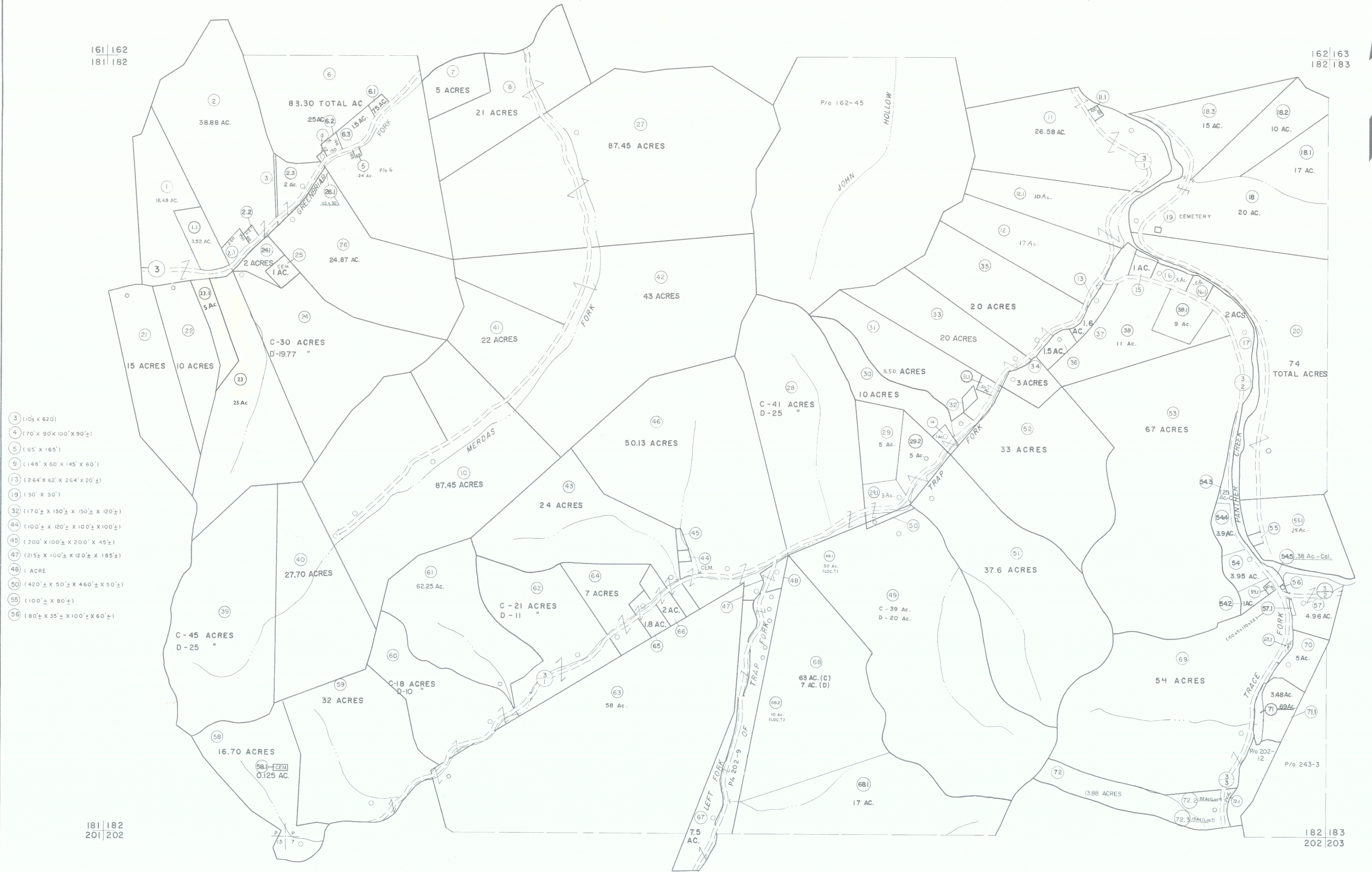


161 | 162
181 | 182

162 | 163
182 | 183



- 3 (102' x 62')
- 4 (170' x 90' x 100' x 90')
- 5 (65' x 165')
- 9 (148' x 60' x 145' x 60')
- 13 (264' x 62' x 264' x 20')
- 19 (50' x 50')
- 32 (170' ± x 130' ± x 150' ± x 120' ±)
- 44 (100' ± x 120' ± x 100' ± x 100' ±)
- 45 (200' x 100' ± x 200' x 45' ±)
- 47 (215' ± x 100' ± x 120' ± x 185' ±)
- 48 1 ACRE
- 50 (420' ± x 50' ± x 460' ± x 50' ±)
- 55 (100' ± x 80' ±)
- 56 (80' ± x 35' ± x 100' ± x 60' ±)

181 | 182
201 | 202

182 | 183
202 | 203

For Tax Purposes Only

Prepared by
MICHAEL BAKER, JR., INC.
Consulting Engineers
Rochester, Pennsylvania

Legend	
Property line	Original lot line
Edge of pavement or roadway	Deed lot number
Corporation line	Parcel or index number
District line	Improvement
County line	Railroad

Revisions	
1 4-15-64	9 SLS INC. 12/29/98 DSW 17
2 12-5-74 T.G.	10 5/24/04 SBH 18
3 Copied to 7-1-83	11 4-18-07 H+H 19
4	12 2-7-10 H+H 20
5	13 2/28/17 SLS 21
6 O.G.I.S 5-15-95 J.E.B	14 3/21/19 DGS 22
7 SLS INC. 6/24/98 J.W.	15
8	16

KEY MAP

McDOWELL COUNTY
STATE OF WEST VIRGINIA
Office of Assessor

DISTRICT
SANDY RIVER

SHEET NO: 182

Date, Aerial Photography: April, 1961 Date, Map: July, 1962
Photo No: Scale: 1" = 400'