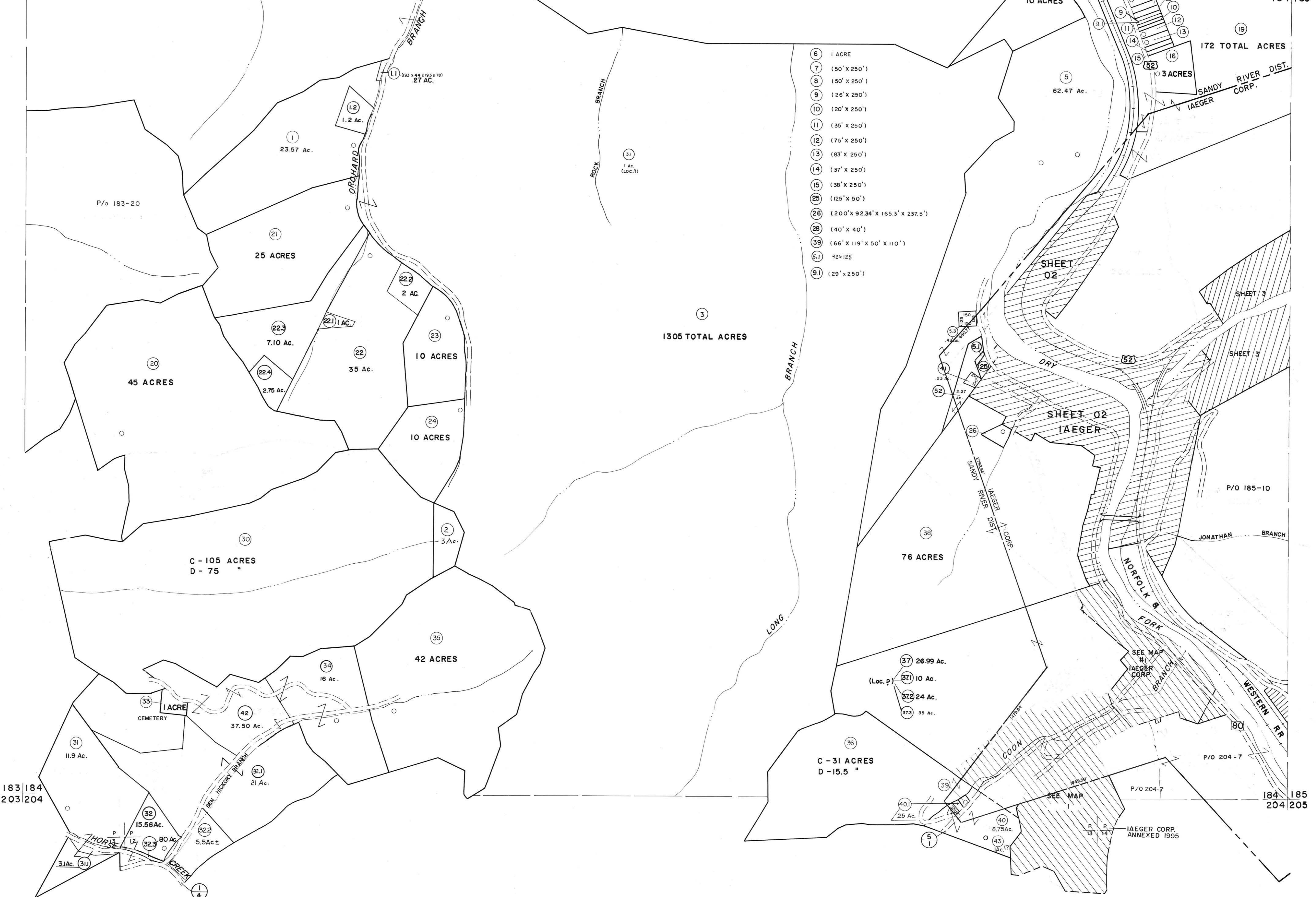


163 | 164
183 | 184

164 | 165
184 | 185

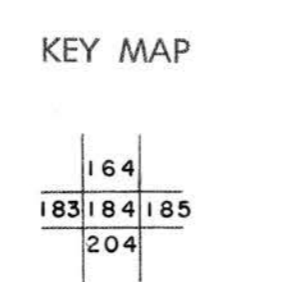


- 6 1 ACRE
- 7 (50' X 250')
- 8 (50' X 250')
- 9 (26' X 250')
- 10 (20' X 250')
- 11 (35' X 250')
- 12 (75' X 250')
- 13 (83' X 250')
- 14 (37' X 250')
- 15 (38' X 250')
- 25 (125' X 50')
- 26 (200' X 92.34' X 165.3' X 237.5')
- 28 (40' X 40')
- 39 (66' X 119' X 50' X 110')
- 51 42 X 125
- 91 (29' X 250')

For Tax Purposes Only
Prepared by
MICHAEL BAKER, JR., INC.
Consulting Engineers
Rochester, Pennsylvania

Legend	
Property line	—————
Edge of pavement or roadway	—————
Corporation line	—————
District line	—————
County line	—————
Original lot line	-----
Deed lot number	(15)
Parcel or index number	(99)
Improvement	o
Railroad	—+—+—+—

Revisions			
1	4-15-64	9	O.G.I.S 12-1-96 J.E.B 17
2	12-5-74	10	SLS INC. 12/29/98 DSW 18
3	Revised to 7-1-88	11	ESI 12/4/02 REK 19
4	7-1-84	12	5/24/04 SBH 20
5	Revised to 7-1-88	13	5-15-05 HHS 21
6	Revised to 7-1-88	14	4-18-07 HHS 22
7	Revised to 7-1-88	15	2/28/17 SLS 23
8	O.G.I.S 5-15-95 J.E.B 16	16	



McDOWELL COUNTY
STATE OF WEST VIRGINIA
Office of Assessor

DISTRICT
SANDY RIVER
SHEET NO: 184
Date, Aerial Photography: April, 1961
Photo No: _____
Date, Map: July, 1962
Scale: 1" = 400'