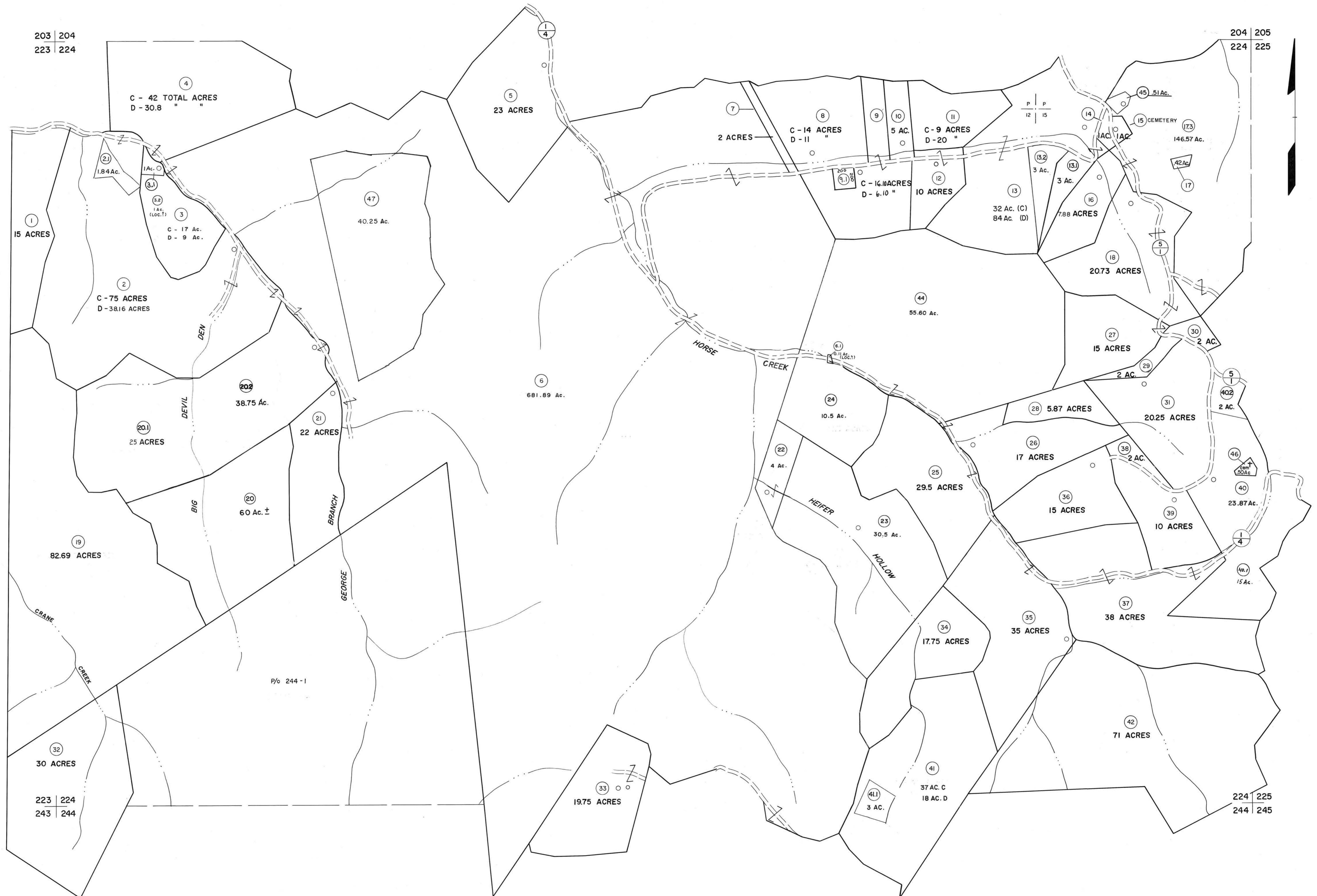


203 | 204  
223 | 224

204 | 205  
224 | 225



For Tax Purposes Only

Prepared by  
MICHAEL BAKER, JR., INC.  
Consulting Engineers  
Rochester, Pennsylvania

Legend

Property line	—	Original lot line	—
Edge of pavement or roadway	- - -	Deed lot number	(15)
Corporation line	- · - · -	Parcel or index number	(19)
District line	- - - - -	Improvement	o
County line	- - - - -	Railroad	—

Revisions

1	4-15-64	9	SLS INC.	12/30/98	DSW	17
2	12-6-74	10	ESI	4/24/01	REK	18
3	Revised to 7-1-83	11		5/23/04	SBH	19
4	7-1-84	12	L.E.S.	5-15-05	JWS	20
5	July 1988	13		8/27/06	SBH	21
6	Revised to 7-1-88	14		4/16/12	SBH	22
7	Revised to 7-1-89	15		3/2/14	SBH	23
8	O.G.I.S 5-15-95	16	J.E.B.	2/28/17	SLS	24

KEY MAP

204  
223 | 224 | 225  
244

**McDOWELL COUNTY**  
STATE OF WEST VIRGINIA  
Office of Assessor

DISTRICT

**SANDY RIVER**

SHEET NO: 224

Date, Aerial Photography: April, 1961 Date, Map: July, 1962  
Photo No: Scale: 1" = 400'