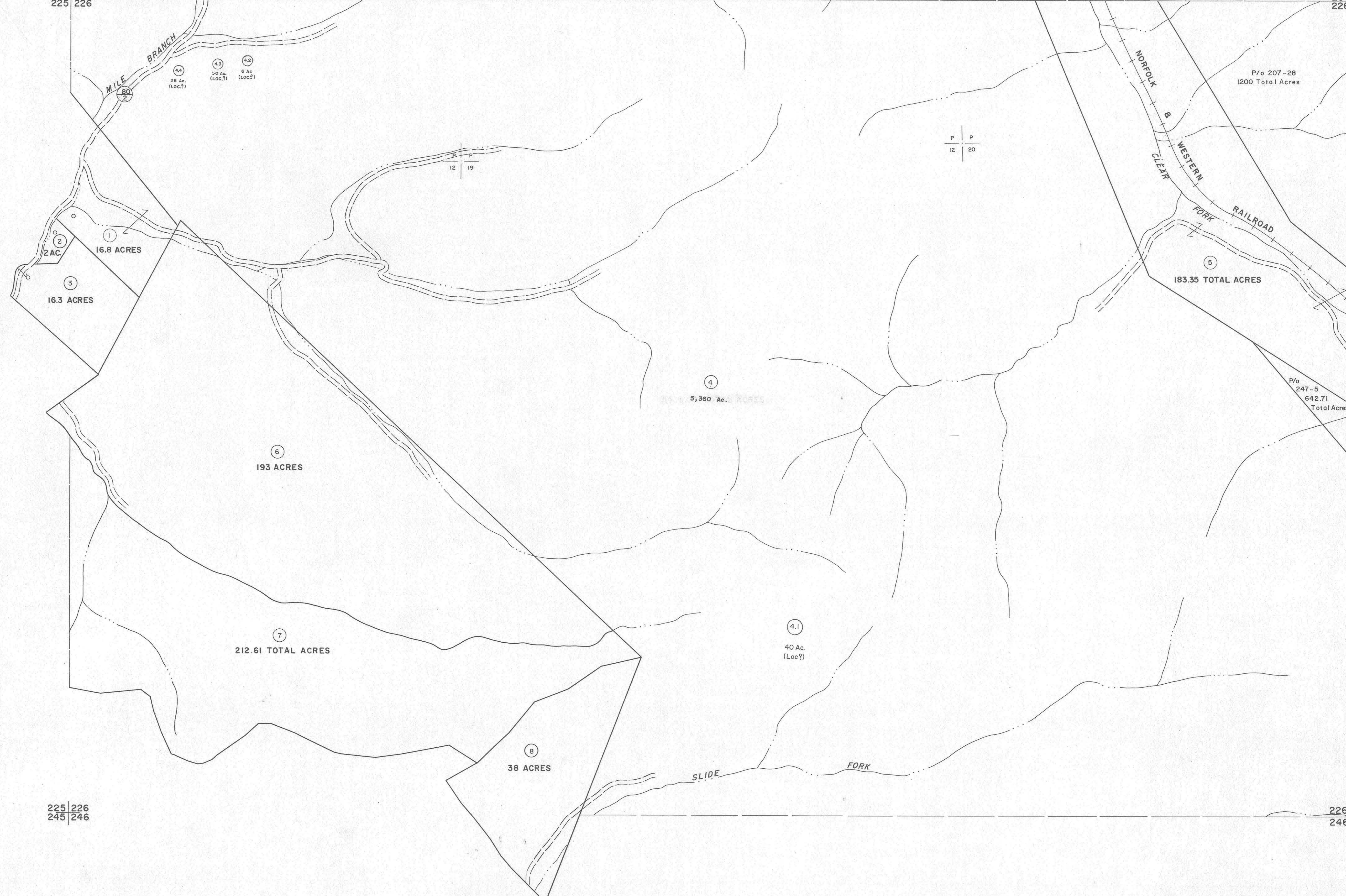


205 206  
225 226

206 207  
226 227



225 226  
245 246

226 227  
246 247

**For Tax Purposes Only**

Prepared by  
**MICHAEL BAKER, JR., INC.**  
Consulting Engineers  
Rochester, Pennsylvania

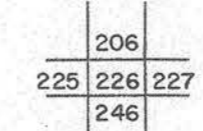
**Legend**

Property line	—	Original lot line	—
Edge of pavement or roadway	—	Deed lot number	(15)
Corporation line	—	Parcel or index number	(22)
District line	—	Improvement	o
County line	—	Railroad	—

**Revisions**

1	4-15-64	9		17
2	12-9-74	10	T.C.	18
3	Revised to 7-1-83	11		19
4	O.G.I.S 5-15-95	12	J.E.B	20
5	2/28/17	13	SLS	21
6		14		22
7		15		23
8		16		24

**KEY MAP**



**McDOWELL COUNTY**  
STATE OF WEST VIRGINIA  
Office of Assessor

**DISTRICT**

**SANDY RIVER**

**SHEET NO: 226**

Date, Aerial Photography: April, 1961  
Photo No: \_\_\_\_\_  
Date, Map: July, 1962  
Scale: 1" = 400'