

263264
283284

264265
284285

- (12) (100' x 60')
- (34) (100' x 184' x 80' x 120')
- (35) (273.63' x 167.27' x 128.06' x 99.94' x 90.85' x 31.59')
- (51) (90' x 125')

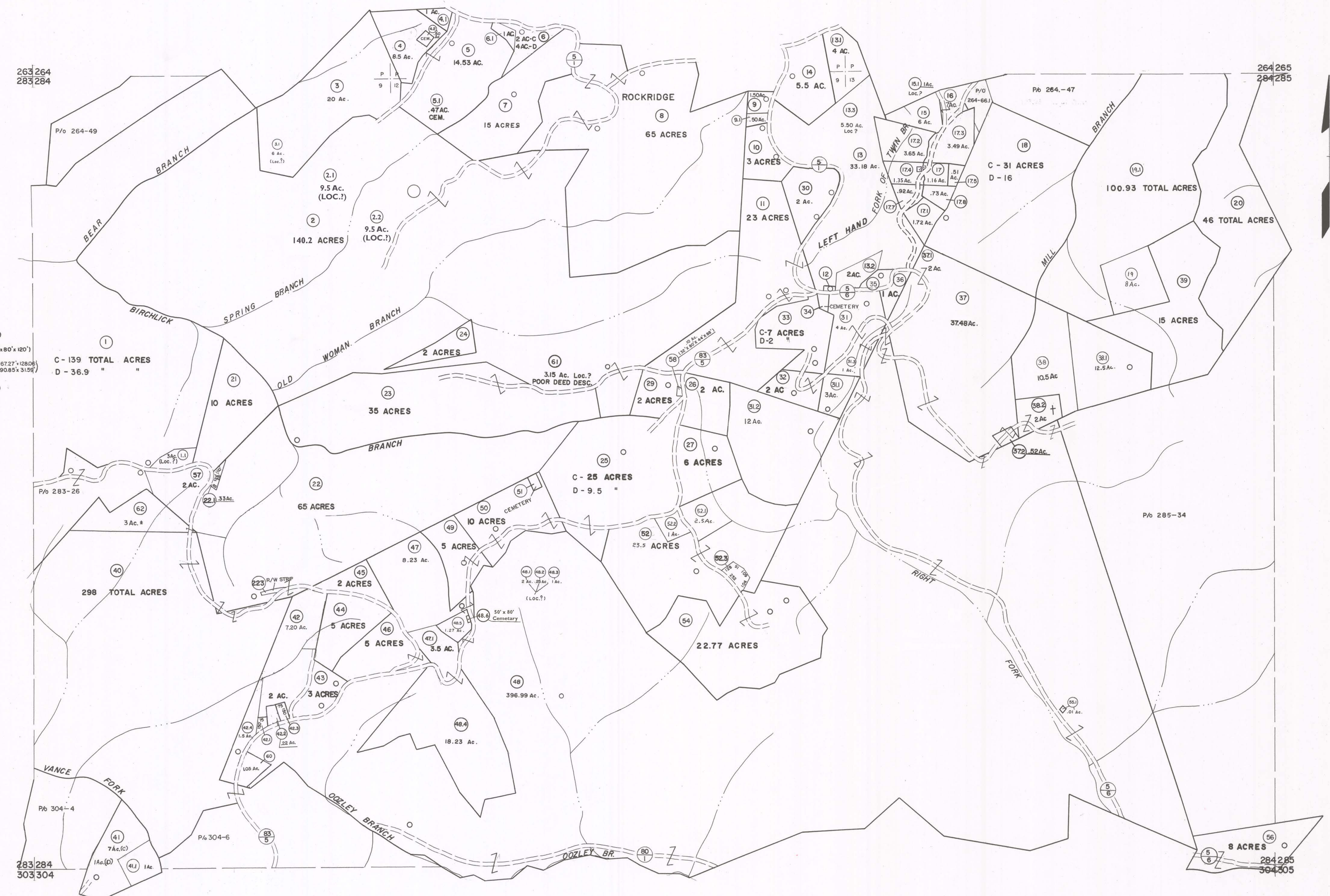
C - 139 TOTAL ACRES
D - 36.9 "

C - 25 ACRES
D - 9.5 "

100.93 TOTAL ACRES

298 TOTAL ACRES

8 ACRES
284285
304305



For Tax Purposes Only

Prepared by
MICHAEL BAKER, JR., INC.
Consulting Engineers
Rochester, Pennsylvania

Legend	
Property line	-----
Edge of pavement or roadway	-----
Corporation line	-----
District line	-----
County line	-----
Original lot line	-----
Dead lot number	(15)
Parcel or index number	(99)
Improvement	o
Railroad	o

Revisions			
1	4-15-64	9	O.G.I.S 12-1-96 J.E.B 17 3/28/18 NLS
2	12-11-74 T.G.	10	SLS INC. 6/26/98 JWM 18
3	Revised to 7-1-89	11	SLS INC. 12/31/98 DSW 19
4	7-1-84 L.E.S.	12	ESI 4/28/01 REK 20
5	July 1985	13	S.B.H 12/31/05 21
6	Revised to 7-1-89	14	H.S 6-18-07 22
7	Revised to 7-1-89	15	3/28/08 S.B.H 23
8	O.G.I.S 5-15-95	16	2-7-10 H.S 24

KEY MAP

264
283284285
304

McDOWELL COUNTY
STATE OF WEST VIRGINIA
Office of Assessor

DISTRICT
SANDY RIVER

SHEET NO: 284

Date, Aerial Photography: April, 1962 Date, Map: July, 1962
Photo No: Scale: 1" = 400'