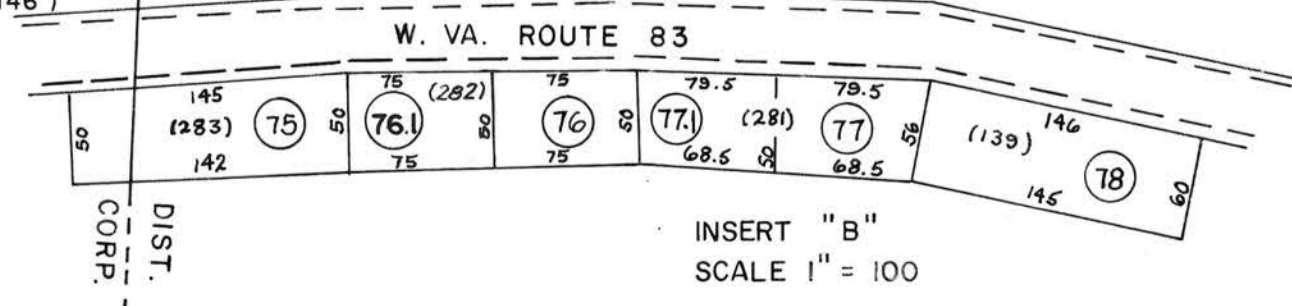


- 3 (540'x25'x455'±x75'±)
- 6 (275'x125'x250'x125'x25'±25)
- 7 (257'x156'x63'x60')
- 8 (70'x90'x98'x45'x64')
- 10 (78'x7'x96'x20')
- 13 (60'x130'x130')
- 15 (100'x200')

- 27 (104.7'x190.66'x94.2'x190.66')
- 28 (186.5'x107.7'x31.6'x125.3'x149')
- 29 (172.45'x56.41'x77.2'x82.75'x272.56'x67.43')
- 32 (114'x197.57'x108.9'x174')
- 34 (80'x175'x210')
- 35 (50'x50')
- 37 (40'x100')
- 38 (40'x100')
- 39 (50'x100')
- 40 (50'x100')
- 41 (234.5'x196'x34.5'x90'x200'x108')
- 41.1 (60'x34'x91'x89'x114'x114')
- 41.1.1 (150'x19.38'x123.88'x77.19'x259.49'x12.28'x35' AC)
- 42 (65.91'x45.28'x14.25'x75.24'x101.81'x19' AC)
- 49 (130'x170'x50'x220'x135')
- 55 (175'x135'x180'x110')
- 56 (1100'x110'x100'x95')
- 57 (5'x95'x5'x90')
- 58 (146'x90'x146')

INSERT "A"

Insert "A"
Scale 1"=100'



For Tax Purposes Only
Prepared by
MICHAEL BAKER, JR., INC.
Consulting Engineers
Rochester, Pennsylvania

Legend	
Property line	Original lot line
Edge of pavement or roadway	Deed lot number
Corporation line	Parcel or index number
District line	Improvement
County line	Railroad

Revisions			
1	4-15-64	9	SLS INC. 1/4/99 DSW
2	12-4-74	10	ESI 12/5/02 REK
3	4/1/80	11	DEM 5-15-05 HHS
4	Revised to 7-1-83	12	4-18-07 HHS
5	7-1-84	13	2-7-10 HHS
6	11/1/85	14	3/1/17 SLS
7	Revised to 7-1-85	15	
8	O.G.I.S 5-15-95	16	J.E.B

KEY MAP
285
304305306
325

McDOWELL COUNTY
STATE OF WEST VIRGINIA
Office of Assessor

DISTRICT **SANDY RIVER**
SHEET NO: 305
Date, Aerial Photography: April, 1961 Date, Map: July, 1962
Photo No: Scale: 1" = 400'