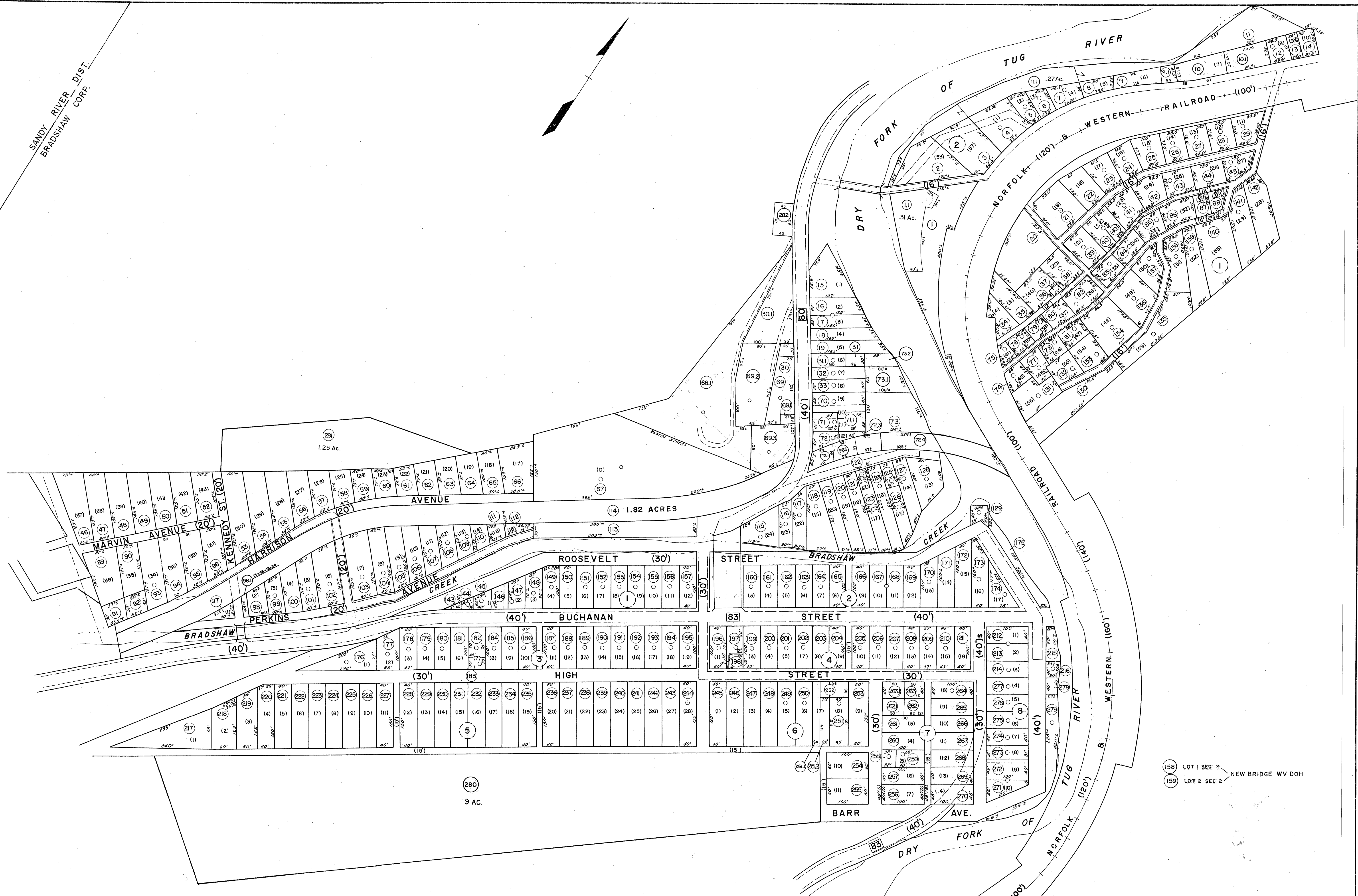
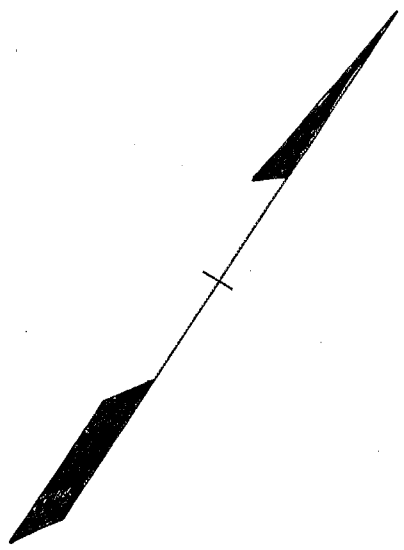


SANDY RIVER DIST.
BRADSHAW CORP.



158 LOT 1 SEC 2
159 LOT 2 SEC 2
NEW BRIDGE WV DOH

For Tax Purposes Only

Prepared by
MICHAEL BAKER, JR., INC.
Consulting Engineers
Rochester, Pennsylvania

Legend

Property line	—	Original lot line	- - - - -
Edge of pavement or roadway	—	Deed lot number	(15)
Corporation line	- - - - -	Parcel or index number	(9)
District line	- - - - -	Improvement	o
County line	- - - - -	Railroad	—+—

Revisions

1	4-15-64	9	O.G.I.S	12-1-96	J.E.B.	17
2	12/11/74	10	J.C.	5/24/04	S.B.H.	18
3	4/29/80	11	VEM	8/27/06	S.B.H.	19
4	15 JULY 1983	12	C.P.	3/27/08	S.B.H.	20
5	REV TO 7-1-84	13	NCS	2-7-10	++4.5	21
6	Revised to 7-1-85	14	TRB	3/3/14	S.B.H.	22
7	7-1-88	15	TRB			23
8	Revised to 7-1-89	16	R.E.B.			24

KEY MAP

4
7 5 6
8

McDOWELL COUNTY
STATE OF WEST VIRGINIA
Office of Assessor

DISTRICT

BRADSHAW CORP.

MAP NO. 5

Date, Aerial Photography: April, 1961 Date, Map: July, 1962
Photo No: 294-8-12 Scale: 1"=100'