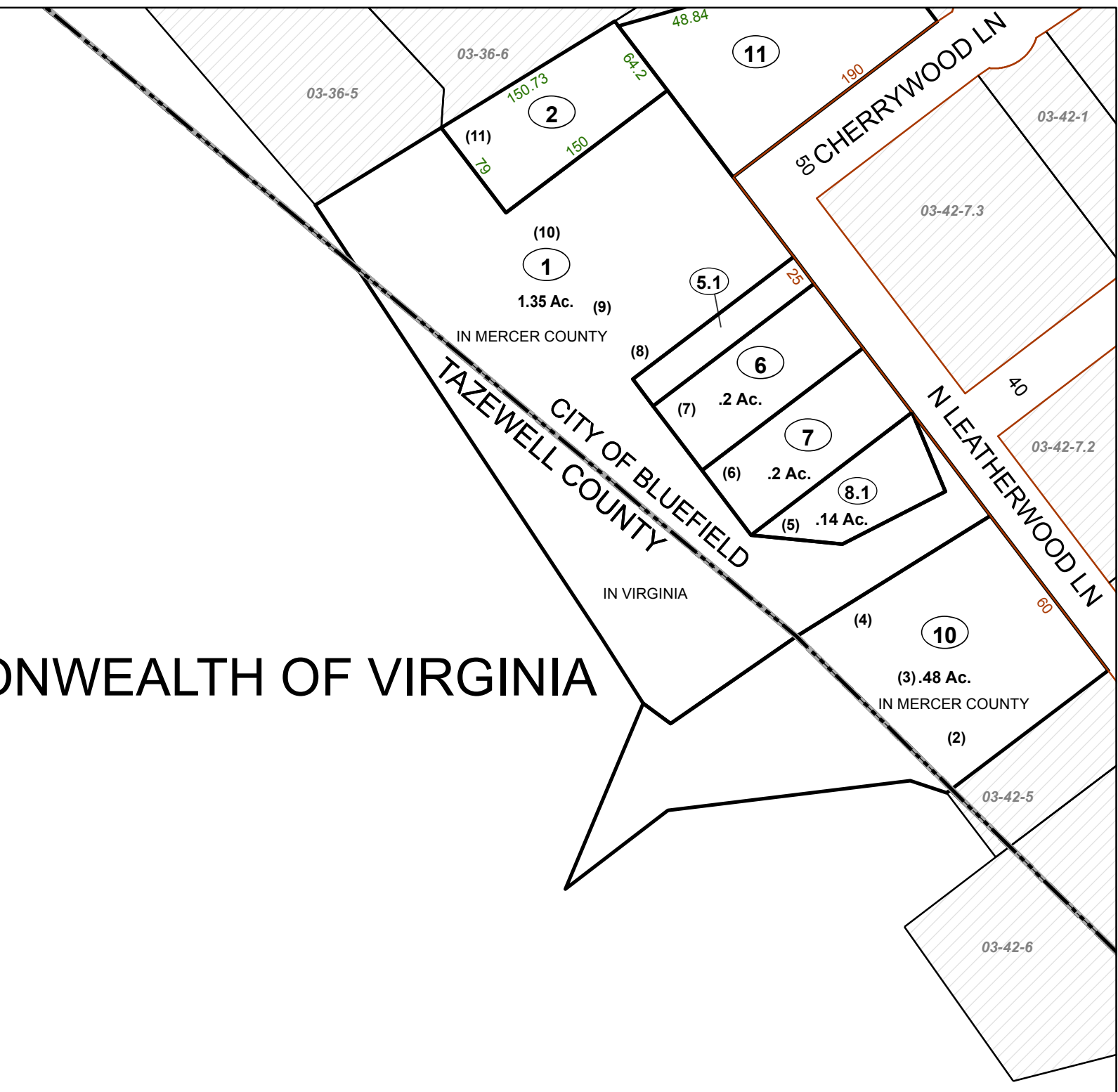


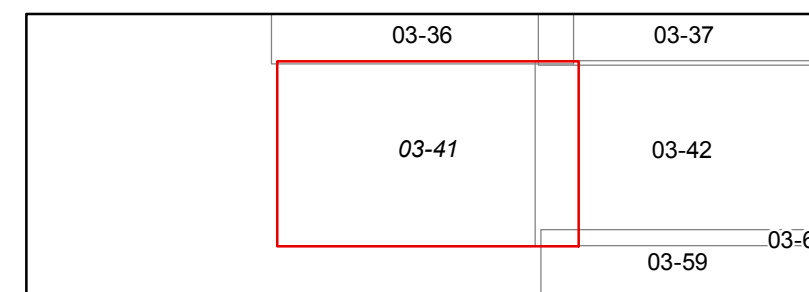
COMMONWEALTH OF VIRGINIA



FOR TAX PURPOSES ONLY
 Prepared By
 Mercer County Assessor's Office
 Princeton, West Virginia

This tax map was compiled for the purpose of taxation from available record evidence and has not been field verified. This map is not a valid survey plat and the data on the map does not imply any official status to such data. The State of West Virginia and the Mercer County Assessor's Office assume no liability that might result from the use of this map.

Legend	
Property Line	Original Lot Line
Road Right of Way	Lot Number
Corporation Line	Parcel Number
District Line	Water
County Line	Railroad



MERCER COUNTY
 WEST VIRGINIA
 Office of Assessor



BLUEFIELD
 Map: 41
 Date, Aerial Photography: 2010
 Date, Map: 9/10/2018
 Scale: 1" = 100'