

FOR TAX PURPOSES ONLY

Prepared By:
Ronald McIntire
 Morgan County Assessor

Legend

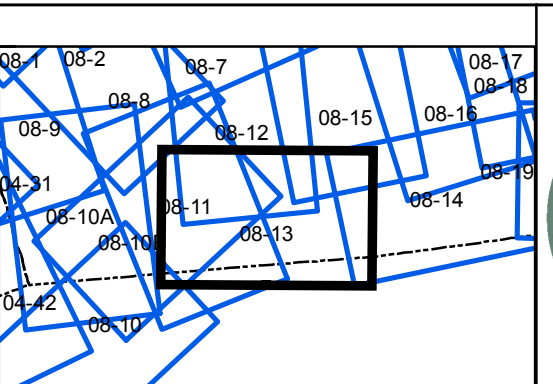
	District Boundary	(15)
	Previous Deed	(9)
	Property	
	Road Easement	
	Road Right of Way	
	River	
	Deed lot Number	(15)
	Parcel or Index Number	(9)
	Unknown	
	Improvement	
	Cemetery	(1)
	Church	(1)
	Educational	(1)

Restriction

REPRODUCTION OF TAX MAPS PROHIBITED
 - It is unlawful to copy, photocopy, scan, photograph, or otherwise reproduce this tax map. Pursuant to the provisions of W.Va. CSR § 189-5-5 (2013) no person may reproduce, copy, distribute or sell copies of tax maps prepared by the counties without having first obtained the written permission of the Morgan County Assessor. In addition to other penalties and civil remedies, any person who, without the written permission of the Morgan County Assessor, reproduces, copies, distributes, or sells or who allows the reproduction, copying, distribution or sale of tax maps prepared by the Morgan County Assessor, shall be refused permission by the Morgan County Assessor or Assessor's agent to purchase tax maps in the future.

Revisions

1	Revised 12/30/2016	10	19	28
2	Revised 02/8/2019	11	20	29
3		12	21	30
4		13	22	31
5		14	23	32
6		15	24	33
7		16	25	34
8		17	26	35
9		18	27	36



MORGAN COUNTY
 Assessor's Office
Ronald McIntire, Assessor
 Berkeley Springs, WV

TIMBER RIDGE
 District: 08 Map No: 13
 Date of Publication: 2/8/2019
 Scale: 1" = 200'