

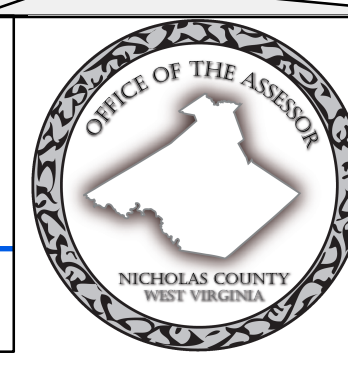
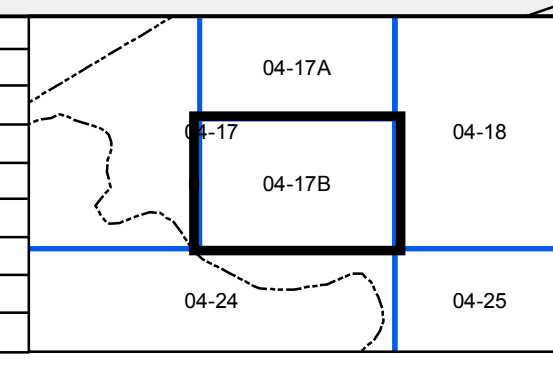
FOR TAX PURPOSES ONLY
LANDMARK
 geospatial
 A Division of Landmark Forestry LLC

Legend	
--- District Boundary	Deed lot Number (15)
- - - Previous Deed	Parcel or Index Number (9)
--- Property	Unknown (blue square)
- - - Road Easement	Improvement (circle)
- - - Railroad Right of Way	Cemetery (cross)
--- Road Right of Way	Church (cross with dot)
--- River	Educational (cross with dot)

Restriction

REPRODUCTION OF TAX MAPS PROHIBITED
 - It is unlawful to copy, photocopy, scan, photograph, or otherwise reproduce this tax map. Pursuant to the provisions of W Va CSR § 189-5-5 (2013) no person may reproduce, copy, distribute or sell copies of tax maps prepared by the counties without having first obtained the written permission of the Nicholas County Assessor. In addition to other penalties and civil remedies, any person who, without the written permission of the Nicholas County Assessor, reproduces, copies, distributes, or sells or who allows the reproduction, copying, distribution or sale of tax maps prepared by the Nicholas County Assessor, shall be refused permission by the Nicholas County Assessor or Assessor's agent to purchase tax maps in the future.

1	10	19	28
2	11	20	29
3	12	21	30
4	13	22	31
5	14	23	32
6	15	24	33
7	16	25	34
8	17	26	35
9	18	27	36



NICHOLAS COUNTY
 Assessor's Office
 SUMMERSVILLE, WV

JEFFERSON
 District 04 Map No. 17B
 Date of Publication: 1/29/2019
 Scale: 1"=200'