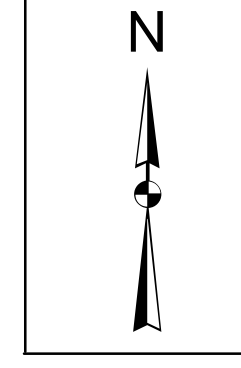
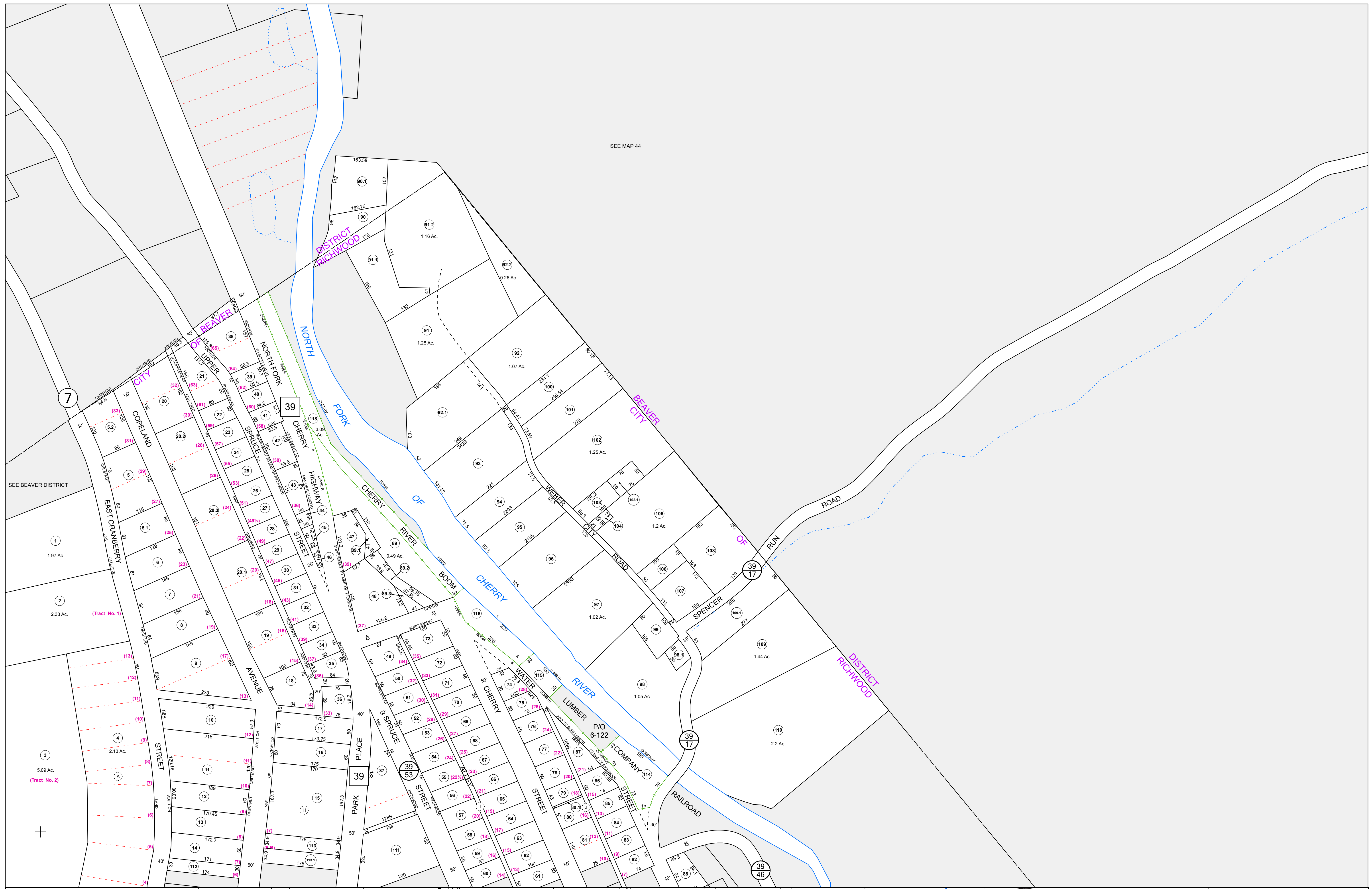


SEE MAP 44



FOR TAX PURPOSES ONLY
LANDMARK
 geospatial
 A Division of Landmark Forestry LLC

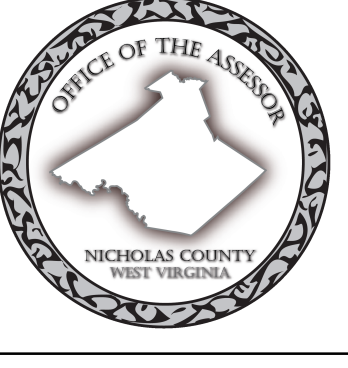
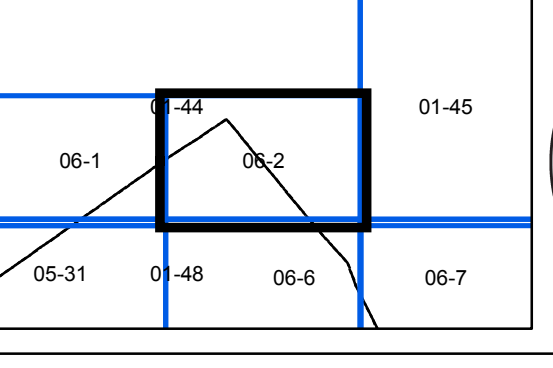
Legend

	District Boundary		Deed lot Number
	Previous Deed		Parcel or Index Number
	Property		Unknown
	Road Easement		Improvement
	Road Right of Way		Cemetery
	Road Right of Way		Church
	River		Educational

Restriction

REPRODUCTION OF TAX MAPS PROHIBITED
 - It is unlawful to copy, photocopy, scan, photograph, or otherwise reproduce this tax map. Pursuant to the provisions of W. Va. CSR § 189-5-5 (2013) no person may reproduce, copy, distribute or sell copies of tax maps prepared by the counties without having first obtained the written permission of the Nicholas County Assessor. In addition to other penalties and civil remedies, any person who, without the written permission of the Nicholas County Assessor, reproduces, copies, distributes, or sells or who allows the reproduction, copying, distribution or sale of tax maps prepared by the Nicholas County Assessor, shall be refused permission by the Nicholas County Assessor or Assessor's agent to purchase tax maps in the future.

1	10	19	28
2	11	20	29
3	12	21	30
4	13	22	31
5	14	23	32
6	15	24	33
7	16	25	34
8	17	26	35
9	18	27	36



NICHOLAS COUNTY
 Assessor's Office
 SUMMERSVILLE, WV

RICHWOOD CORP
 District 06 Map No. 2
 Date of Publication: 1/29/2019
 Scale: 1"=100'