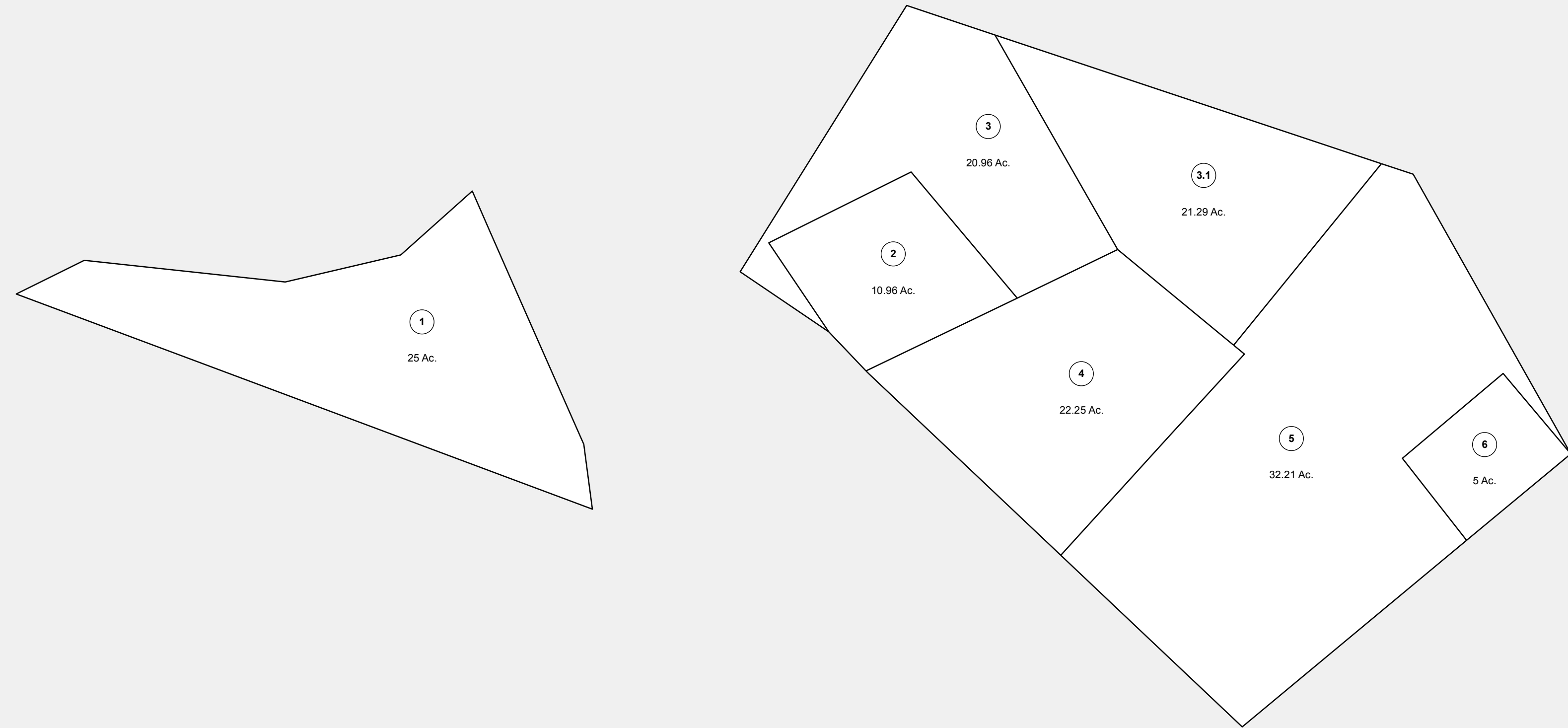


LIBERTYBOWL

BRANCH



Part of parcel 2, map 9

BEECH

FORK

19  
8



**FOR TAX PURPOSES ONLY**  
**LANDMARK**  
 geospatial  
 A Division of Landmark Forestry LLC

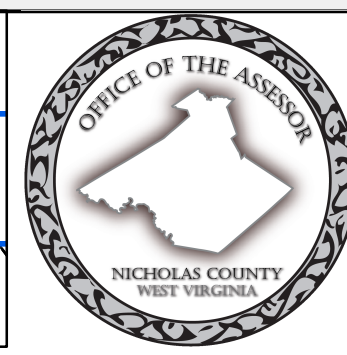
Legend	
	District Boundary
	Previous Deed
	Property
	Road Easement
	Railroad Right of Way
	Road Right of Way
	River
	Deed lot Number (15)
	Parcel or Index Number (9)
	Unknown
	Improvement
	Cemetery
	Church
	Educational

**Restriction**

**REPRODUCTION OF TAX MAPS PROHIBITED**  
 - It is unlawful to copy, photocopy, scan, photograph, or otherwise reproduce this tax map. Pursuant to the provisions of W. Va. CSR § 189-5-5 (2013) no person may reproduce, copy, distribute or sell copies of tax maps prepared by the counties without having first obtained the written permission of the Nicholas County Assessor. In addition to other penalties and civil remedies, any person who, without the written permission of the Nicholas County Assessor, reproduces, copies, distributes, or sells or who allows the reproduction, copying, distribution or sale of tax maps prepared by the Nicholas County Assessor, shall be refused permission by the Nicholas County Assessor or Assessor's agent to purchase tax maps in the future.

1	10	19	28
2	11	20	29
3	12	21	30
4	13	22	31
5	14	23	32
6	15	24	33
7	16	25	34
8	17	26	35
9	18	27	36

07-2	07-3	07-4
07-5	07-6	07-7
07-8	07-9	07-10



**NICHOLAS COUNTY**  
 Assessor's Office  
 SUMMERSVILLE, WV

**SUMMERSVILLE**  
 District 07 Map No. 6  
 Date of Publication: 1/29/2019  
 Scale: 1"=400'