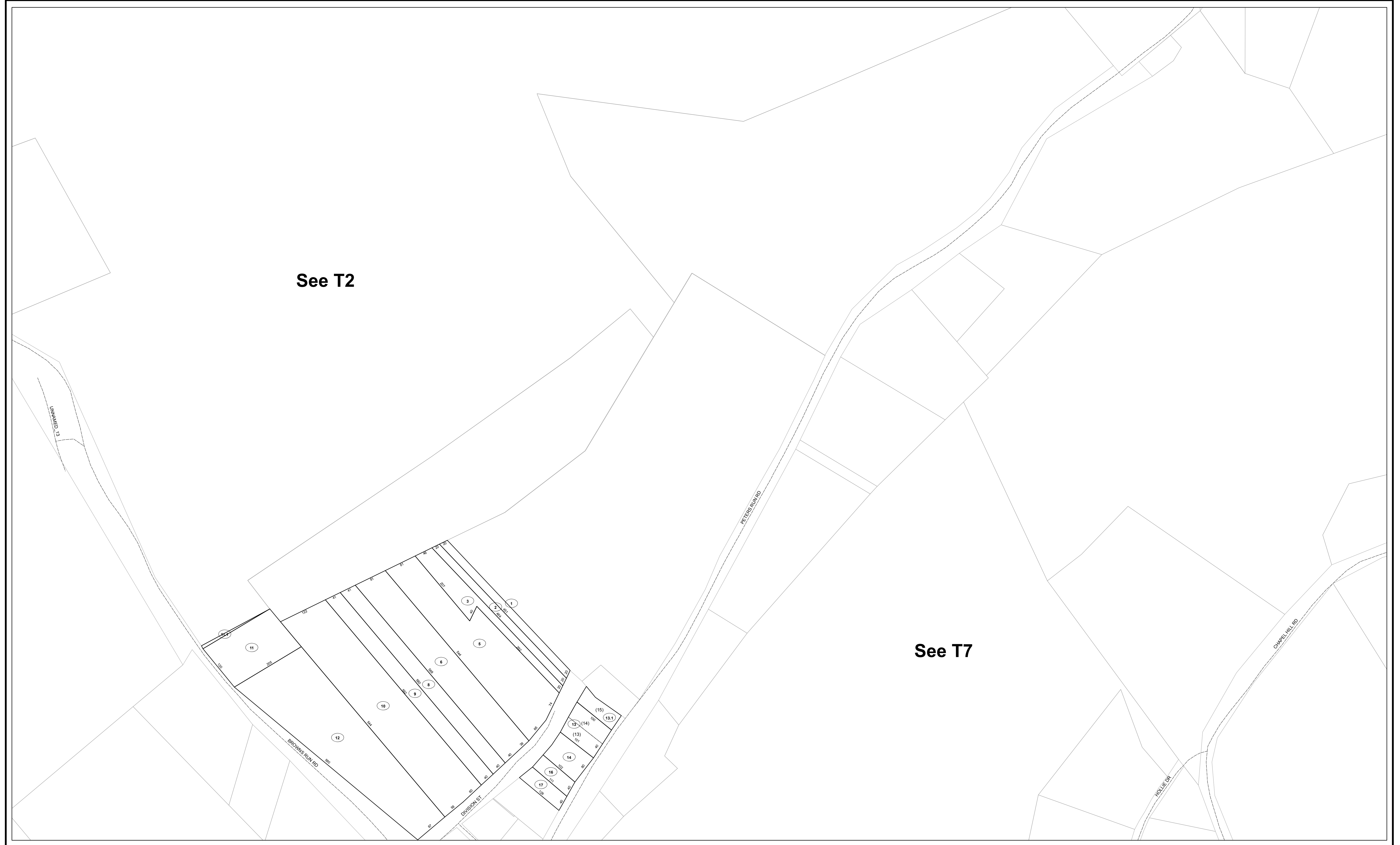


See T2

See T7



LEGEND

Property Line	—————
Edge of Pavement or Roadway	- - - - -
Corporation Line
District Line	-----
County Line	-----

Original Lot Line	-----
Plat Lot Number	(15)
Parcel or Index Number	⑮
Improvement	○
Railroad	—+—+—+—
Stream	~~~~~

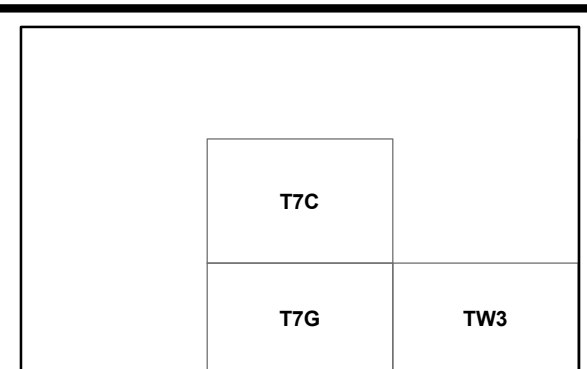
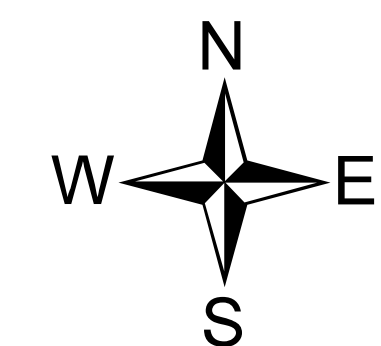
REVISIONS

DISCLAIMER

This document was compiled for purposes of taxation from available record evidence and has not been field verified. This map is not a valid survey plat. The existence of data on this document does not imply "official" status to such data. The West Virginia State Tax Department and the Ohio County Assessor's Office assume no liability that might result from the use of this document.

FOR TAX PURPOSES ONLY

Office of the
Ohio County Assessor
Kathie Hoffman, Assessor



Map No: **T7C**
 Drawn By: Bonne Taylor
 Date: 1 January 2016
 Scale: 1 inch = 100 feet