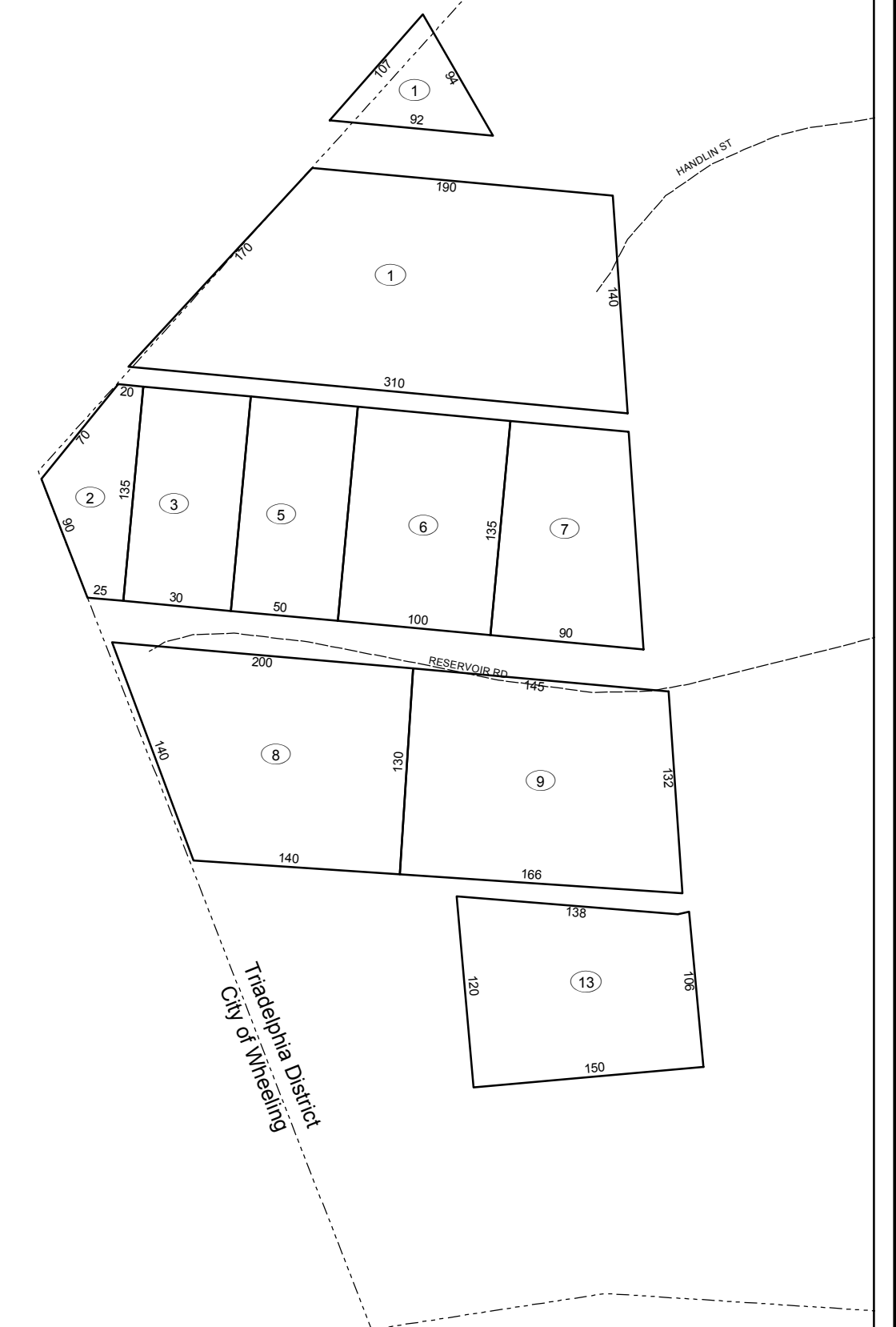


See W86

See W87

See W91



LEGEND

Property Line	—————
Edge of Pavement or Roadway	- - - - -
Corporation Line
District Line
County Line

Original Lot Line	-----
Deed Lot Number	(15)
Parcel or Index Number	⑮
Improvement	○
Railroad	—————
Stream	~~~~~

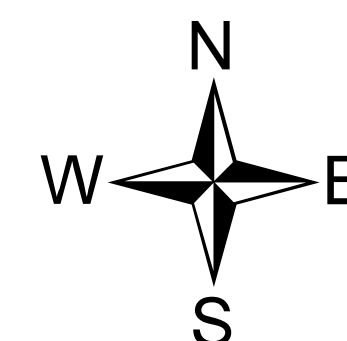
REVISIONS

DISCLAIMER

This document was compiled for purposes of taxation from available record evidence and has not been field verified. This map is not a valid survey plat. The existence of data on this document does not imply "official" status to such data. The West Virginia State Tax Department and the Ohio County Assessor's Office assume no liability that might result from the use of this document.

FOR TAX PURPOSES ONLY

Office of the
Ohio County Assessor
Kathie Hoffman, Assessor



	T12	T12F
T11	T12J	T12K
	T12N	T12P

Map No:

T12J

Drawn By:

Tyler Carpenter

Date:

May 07, 2013

Scale:

1 inch = 100 feet