

See T7

See T8

Town of Treadelphia  
Treadelphia District

CODYS LN

DIMMICK WAY

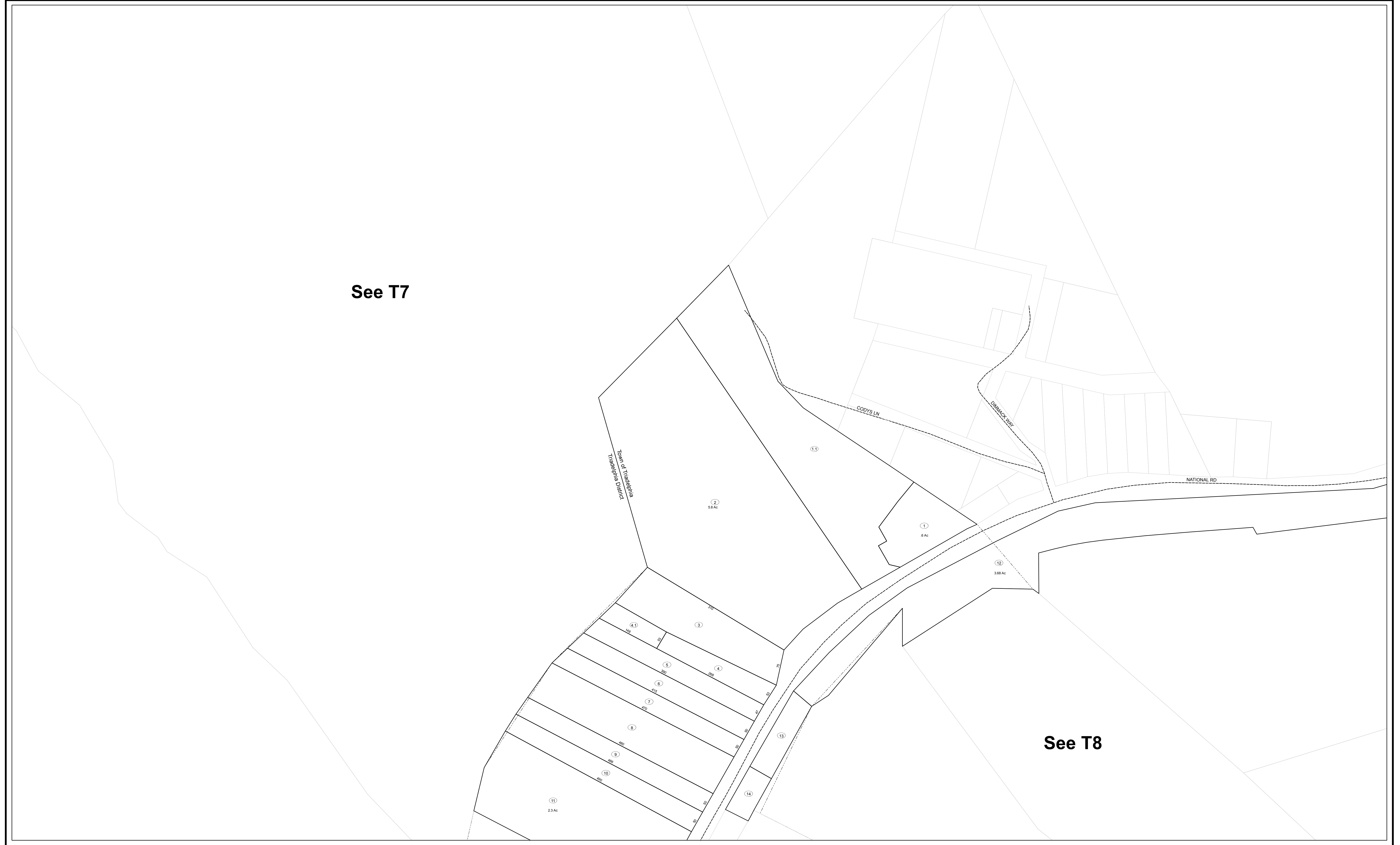
NATIONAL RD

2  
5.8 Ac

1  
6 Ac

12  
3.68 Ac

11  
2.3 Ac



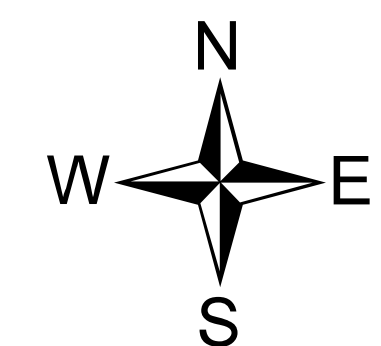
LEGEND	
Property Line	—————
Edge of Pavement or Roadway	- - - - -
Corporation Line	.....
District Line	.....
County Line	.....

Original Lot Line	-----
Plat Lot Number	(15)
Parcel or Index Number	⑮
Improvement	○
Railroad	—+—+—+—
Stream	~~~~~

REVISIONS

**DISCLAIMER**  
This document was compiled for purposes of taxation from available record evidence and has not been field verified. This map is not a valid survey plat. The existence of data on this document does not imply "official" status to such data. The West Virginia State Tax Department and the Ohio County Assessor's Office assume no liability that might result from the use of this document.  
**FOR TAX PURPOSES ONLY**

Office of the  
**Ohio County Assessor**  
Kathie Hoffman, Assessor



T2	T3	T3P
T7	TW7	T8B
TW3	TW8 T8E	

Map No: **TW7**  
 Drawn By: Bonne Taylor  
 Date: 7 February 2014  
 Scale: 1 inch = 100 feet