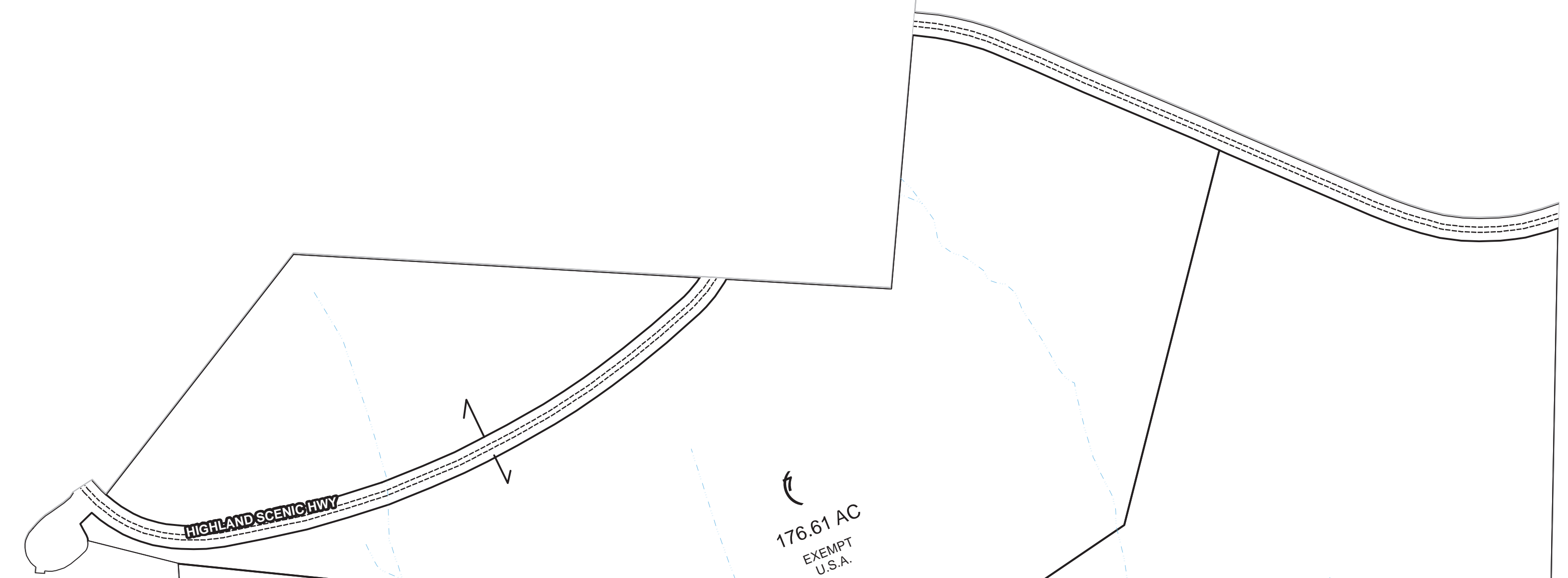


3

20

16



8.19 AC EXEMPT U.S.A. (1153)
7.79 AC (A)
7.79 AC (B)

176.61 AC EXEMPT U.S.A. (1164)

289 AC

116 AC

120 AC

1 AC

61 AC

84.60 AC

45 AC

43 AC

37

39 AC

45

80 AC



Disclaimer
This tax map was compiled for purposes of taxation from available record evidence and has not been field verified. This map is not a valid survey plat and the data on this map does not imply any official status to such data. The State of West Virginia and the Pocahontas County Assessor's Office assume no liability that might result from the use of this map.

| Legend | |
|----------------------|-----------|
| PARCEL BOUNDARY | ——— |
| CORPORATION BOUNDARY | - - - - - |
| DISTRICT BOUNDARY | - · - · - |
| COUNTY BOUNDARY | - - - - - |
| RIGHT OF WAY | ==== |
| ORIGINAL LOT LINE | - - - - - |
| PARCEL NUMBER | Ⓢ |
| DEED LOT NUMBER | (15) |
| MATCH LINE | - - - - - |
| IMPROVEMENT | ○ |
| RAILROAD | —+—+— |

| Revisions | |
|-----------|--------------|
| 1 | June 1, 2012 |
| 2 | June 1, 2015 |
| 3 | |
| 4 | |
| 5 | |
| 6 | |
| 7 | |

RESTRICTION
All tax maps created under the provisions of reappraisal legislation are the property of the Pocahontas County Assessor's Office and the reproduction, copying, distribution or sale of such tax maps without the written permission of the State Tax Commissioner or the Assessor of Pocahontas County is prohibited by law.

| MAP KEY | |
|---------|---|
| | x |

**STATE OF WEST VIRGINIA
COUNTY OF POCAHONTAS**
OFFICE OF ASSESSOR, MARLINTON, WV
Prepared on January 25, 2016



Edray District
District No. 03 Map No. 38 Scale: 1:4,800

0 212.5 425 850 1,275 1,700 Feet

2