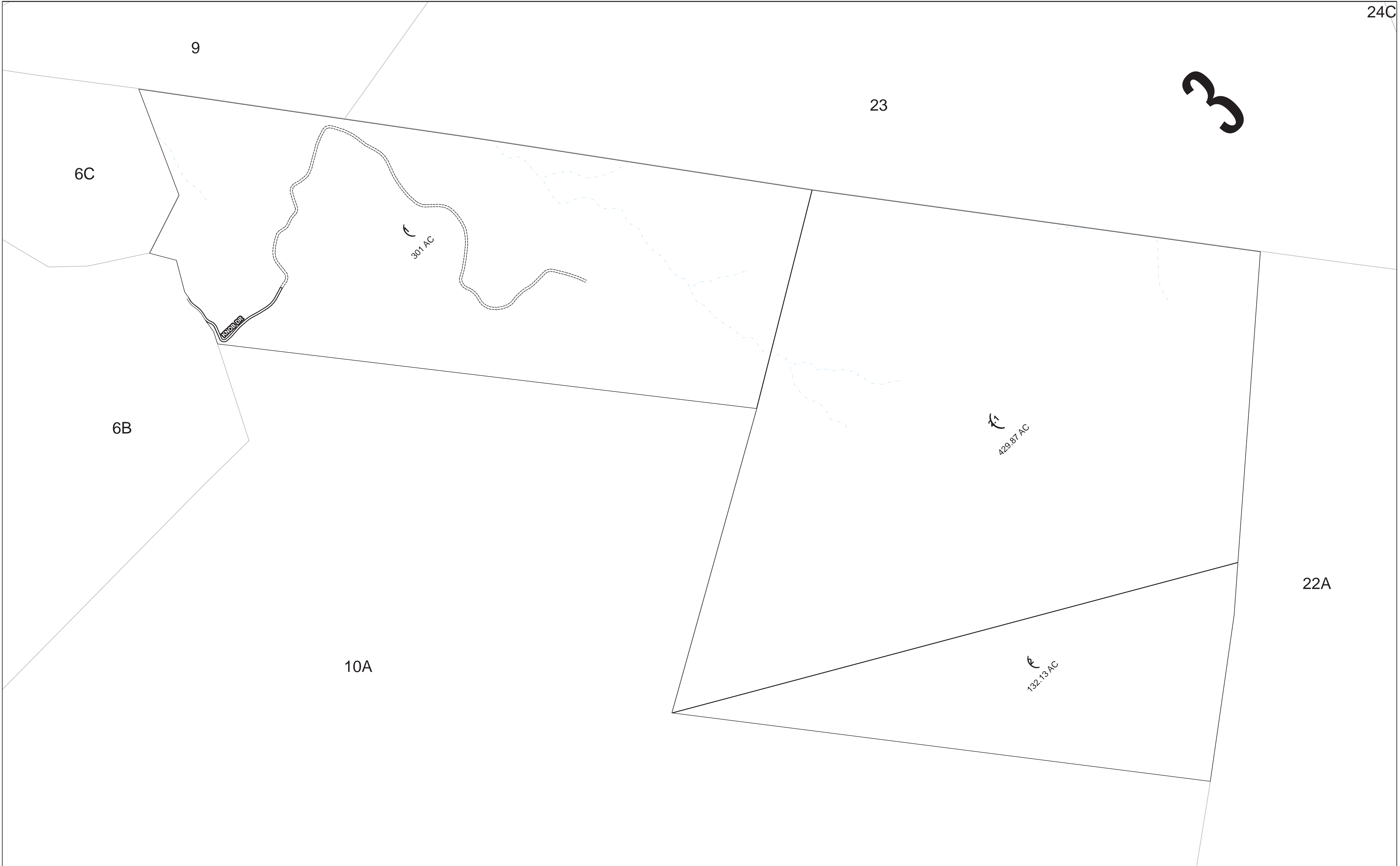


3



Disclaimer

This tax map was compiled for purposes of taxation from available record evidence and has not been field verified. This map is not a valid survey plat and the data on this map does not imply any official status to such data. The State of West Virginia and the Pocahontas County Assessor's Office assume no liability that might result from the use of this map.

Legend

PARCEL BOUNDARY	———	ORIGINAL LOT LINE	- - - - -
CORPORATION BOUNDARY	- · - · - · -	PARCEL NUMBER	Ⓔ
DISTRICT BOUNDARY	- · - · - · -	DEED LOT NUMBER	(15)
COUNTY BOUNDARY	- · - · - · -	MATCH LINE	- - - - -
RIGHT OF WAY	=====	IMPROVEMENT	○
		RAILROAD	—+—+—+—

Revisions

1	June 1, 2012
2	
3	
4	
5	
6	
7	

RESTRICTION

All tax maps created under the provisions of reappraisal legislation are the property of the Pocahontas County Assessor's Office and the reproduction, copying, distribution or sale of such tax maps without the written permission of the State Tax Commissioner or the Assessor of Pocahontas County is prohibited by law.

MAP KEY

03-6C	03-9	03-9
03-10A	X	03-23
03-10A	03-22A	03-22A

**STATE OF WEST VIRGINIA
COUNTY OF POCAHONTAS**
OFFICE OF ASSESSOR, MARLINTON, WV
Prepared on January 25, 2016



Edray District
District No. 03 Map No. 10B Scale: 1:4,800

0 212.5 425 850 1,275 1,700 Feet

2