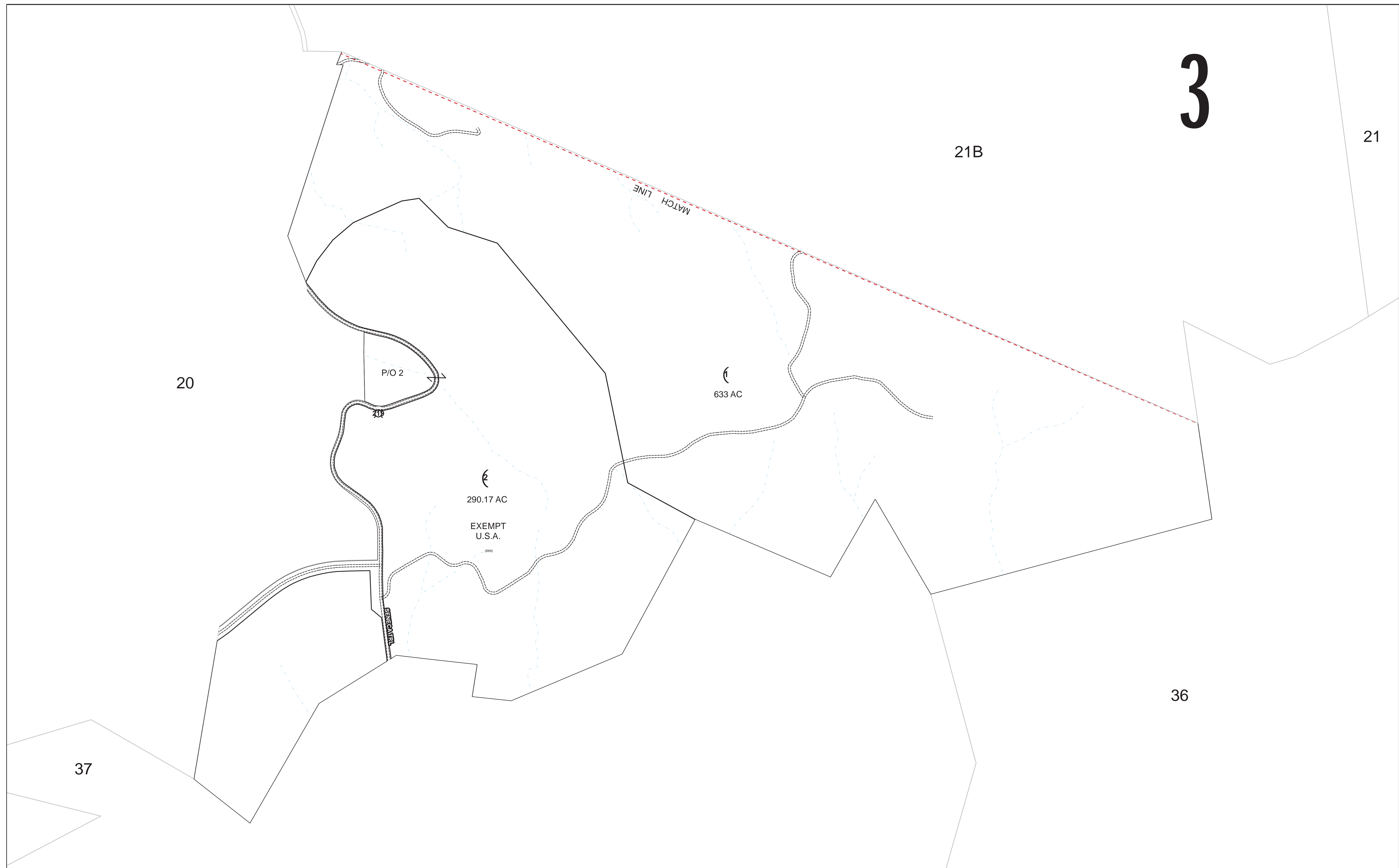


# 3



**Disclaimer**  
 This tax map was compiled for purposes of taxation from available record evidence and has not been field verified. This map is not a valid survey plat and the data on this map does not imply any official status to such data. The State of West Virginia and the Pocahontas County Assessor's Office assume no liability that might result from the use of this map.

Legend	
PARCEL BOUNDARY	———
CORPORATION BOUNDARY	- - - - -
DISTRICT BOUNDARY	- · - · -
COUNTY BOUNDARY	- - - - -
RIGHT OF WAY	=====
ORIGINAL LOT LINE	- - - - -
PARCEL NUMBER	⊕
DEED LOT NUMBER	(15)
MATCH LINE	- - - - -
IMPROVEMENT	○
RAILROAD	—+—+—+—

Revisions	
1	June 1, 2012
2	
3	
4	
5	
6	
7	

**RESTRICTION**  
 All tax maps created under the provisions of reappraisal legislation are the property of the Pocahontas County Assessor's Office and the reproduction, copying, distribution or sale of such tax maps without the written permission of the State Tax Commissioner or the Assessor of Pocahontas County is prohibited by law.

MAP KEY		
03-20	03-21B	03-21B
03-20	X	03-36
03-37	03-37	03-36

**STATE OF WEST VIRGINIA  
 COUNTY OF POCAHONTAS**  
 OFFICE OF ASSESSOR, MARLINTON, WV  
 Prepared on January 25, 2016



**Edray District**  
 District No. 03 Map No. 21C Scale: 1:4,800

0 212.5 425 850 1,275 1,700 Feet

# 2