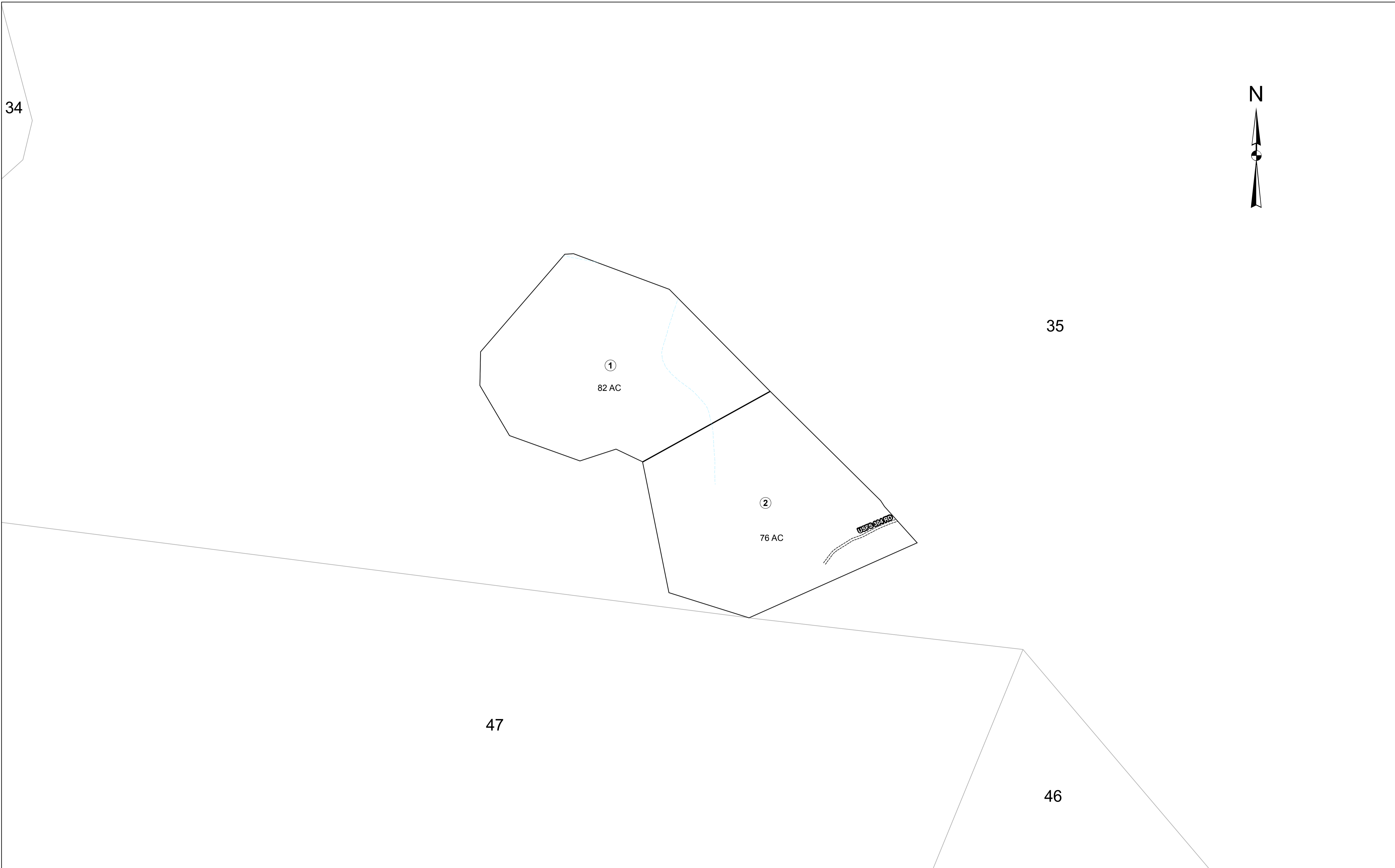
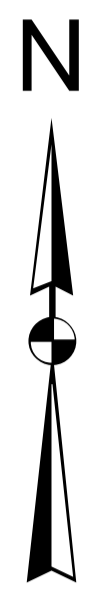


34



For Tax Purposes Only

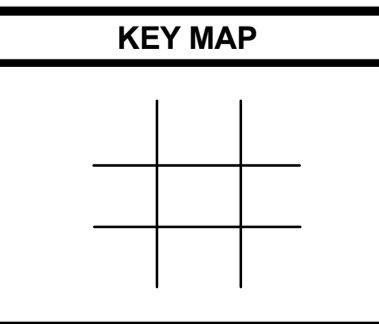
Prepared by
POCAHONTAS COUNTY ASSESSOR
 MARLINTON, WV

Legend	
PARCEL BOUNDARY	—————
CORPORATION BOUNDARY	- - - - -
DISTRICT BOUNDARY	- · - · -
COUNTY BOUNDARY	- - - - -
RIGHT OF WAY	=====
ORIGINAL LOT LINE	- - - - -
PARCEL NUMBER	⑮
DEED LOT NUMBER	(15)
MATCH LINE	- - - - -
IMPROVEMENT	○
RAILROAD	+ + + + +

Revisions	
1	Oct. 15, 2007
2	May 10, 2009
3	Jan. 20, 2010
4	May 16, 2011
5	June 1, 2012
6	
7	

RESTRICTION

All tax maps created under the provisions of reappraisal legislation are the property of the Pocahontas County Assessor's Office and the reproduction, copying, distribution or sale of such tax maps without the written permission of the State Tax Commissioner or the Assessor of Pocahontas County is prohibited by law.



COUNTY OF POCAHONTAS

OFFICE OF ASSESSOR
 Marlinton, W. Va.

06 Huntersville

District **06** Map No. **35A**

Date, Aerial Photography: Date, Map:
 Photo No: Scale: 1" = 400'