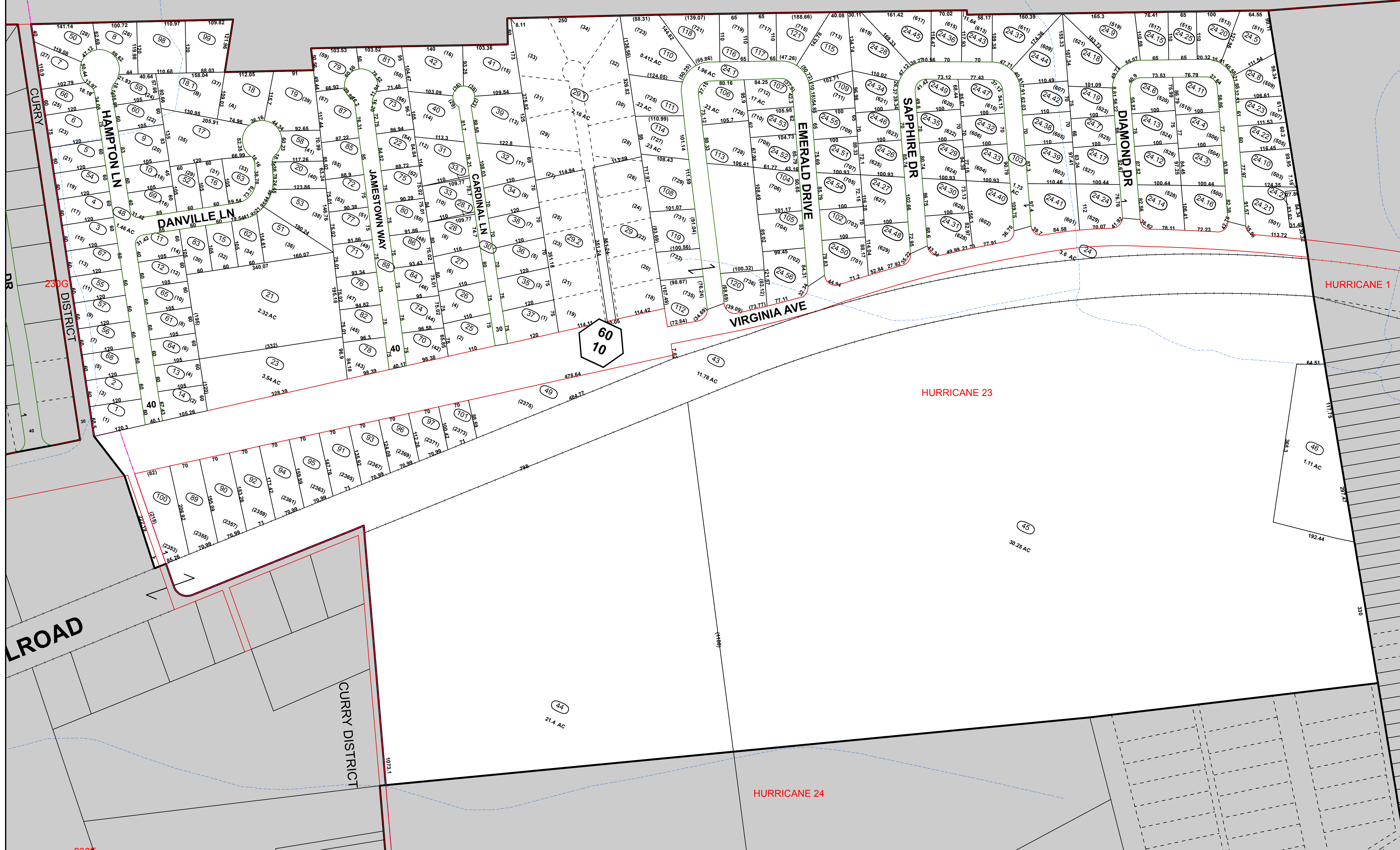
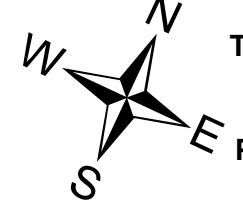


CURRY DISTRICT CITY OF HURRICANE

230

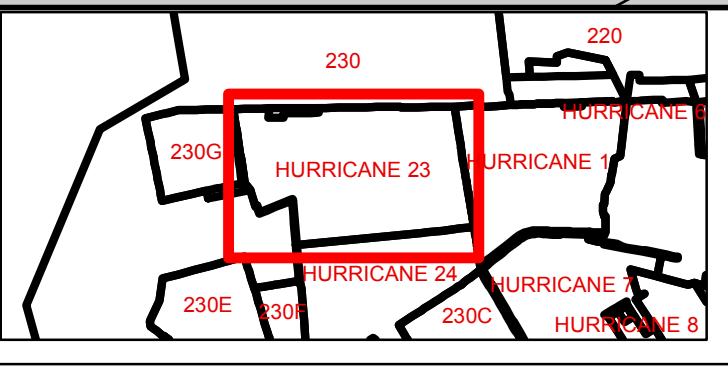



 PREPARED BY
 THE MAPPING / GIS STAFF OF:
SHERRY L. HAYES
PUTNAM COUNTY ASSESSOR
 3389 WINFIELD ROAD
 WINFIELD, WV 25213
 PHONE: (304) 586-0206
 FAX: (304) 586-0226
 Date: 1/8/2016

FOR TAX PURPOSES ONLY
 ALL TAX MAPS CREATED UNDER THE PROVISIONS OF
 REAPPRAISAL LEGISLATION ARE THE PROPERTY OF
 PUTNAM COUNTY WEST VIRGINIA AND THE
 REPRODUCTION, COPYING, DISTRIBUTION OR SALE
 OF SUCH TAX MAPS OR ANY COPIES THEREOF
 WITHOUT THE WRITTEN PERMISSION OF THE PUTNAM
 COUNTY ASSESSOR IS PROHIBITED BY LAW.

Legend	
	Road ROW
	Lot Lines
	Utility Easement
	Parcel Boundary
	Road Easement
	Parcel-Easement
	Rail ROW
	Road-Rail ROW
	District
	Parcel Number
	Routing Number
	Deed Lot Number
	Parcel Hook

Revisions	
1.	10/15/09 UPDATE SUPPLIED TO STATE (PAW)
2.	8/8/13 PRINTED FOR DRAWER PAW
3.	11/06/2013 UPDATE SUPPLIED TO STATE (PAW)
4.	1/14/2015 UPDATE SUPPLIED TO STATE (BAS)
5.	1/17/2016 UPDATE SUPPLIED TO STATE (BAS)
6.	
7.	



PUTNAM COUNTY
 STATE OF WEST VIRGINIA
 OFFICE OF ASSESSOR

Sheet No.: **HURRICANE 23**
 District: HURRICANE TOWN
 Date, Aerial Photography: 2010
 Scale: 1" = 100'