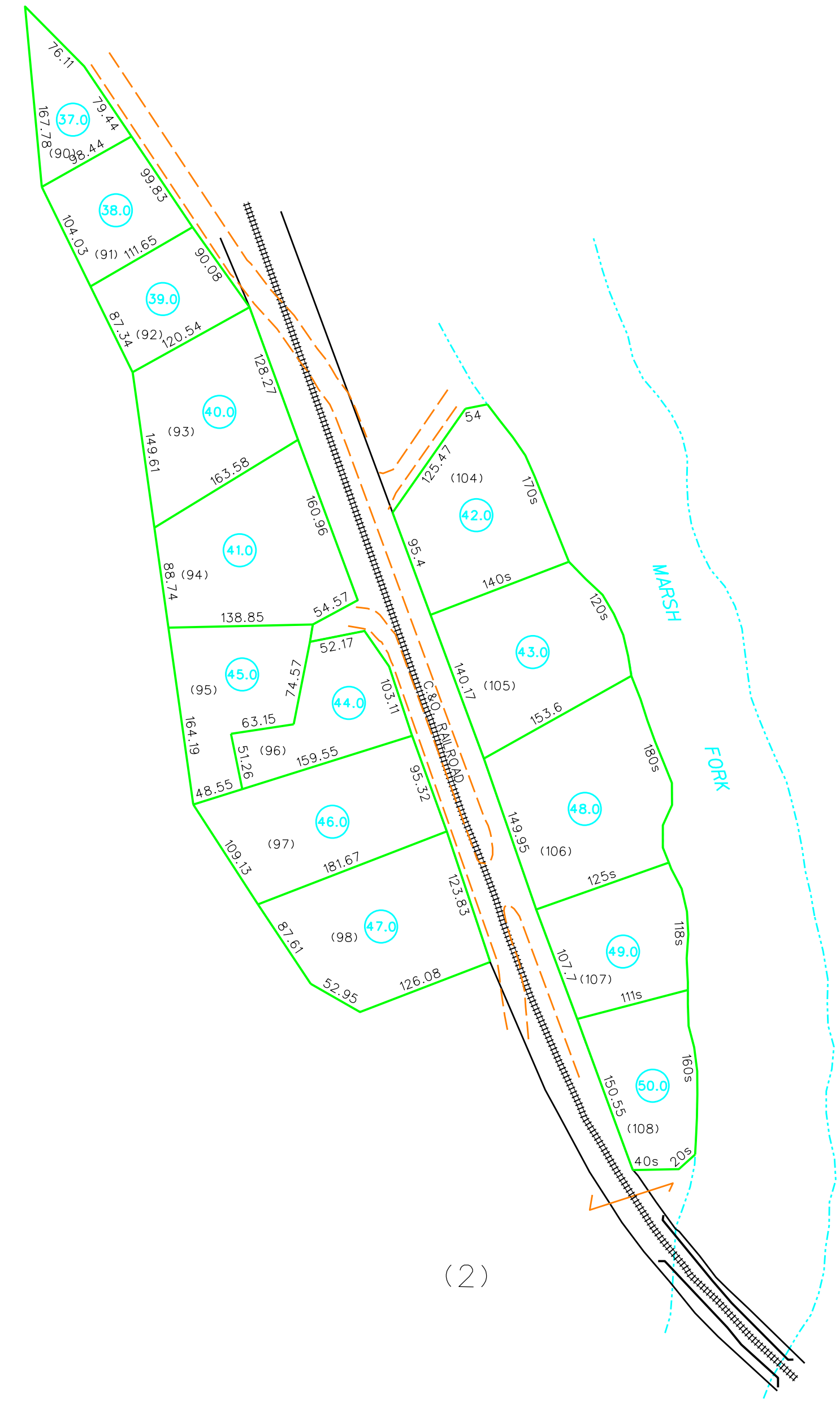




(1)



(2)

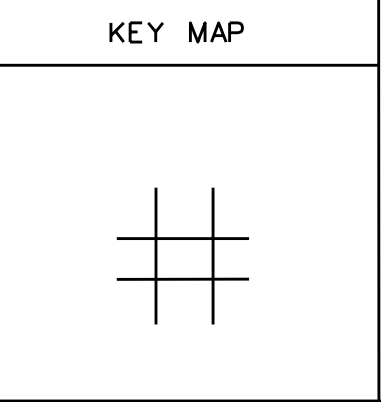
For Tax Purposes Only  
 Prepared by  
**RALEIGH COUNTY ASSESSOR'S OFFICE**  
 BECKLEY, WV

LEGEND	
Property line	—
Edge of pavement or roadway	—
Corporation line	—
District line	—
County line	—
Waterways	—
2010 CHANGE	—
Original lot line	—
Deed lot number	(15)
Parcel or index number	o
Improvement	o
Railroad	—

REVISIONS	
1	
2	
3	
4	
5	
6	
7	
8	

RESTRICTION	

All tax maps created under the provisions of reappraisal legislation are the property of Raleigh County West Virginia and the reproduction, copying, distribution or sale of such tax maps or any copies thereof without the written permission of the Raleigh County Assessor is prohibited by law.



**COUNTY OF RALEIGH**  
 Office of Assessor  
 Beckley, W.Va.

MARSH FORK DISTRICT  
 District 05 Map No. 04A

Date, Aerial Photography: \_\_\_\_\_  
 Photo No: \_\_\_\_\_

Date, Map: OCT. 29, 1998  
 Scale: 1"=100'