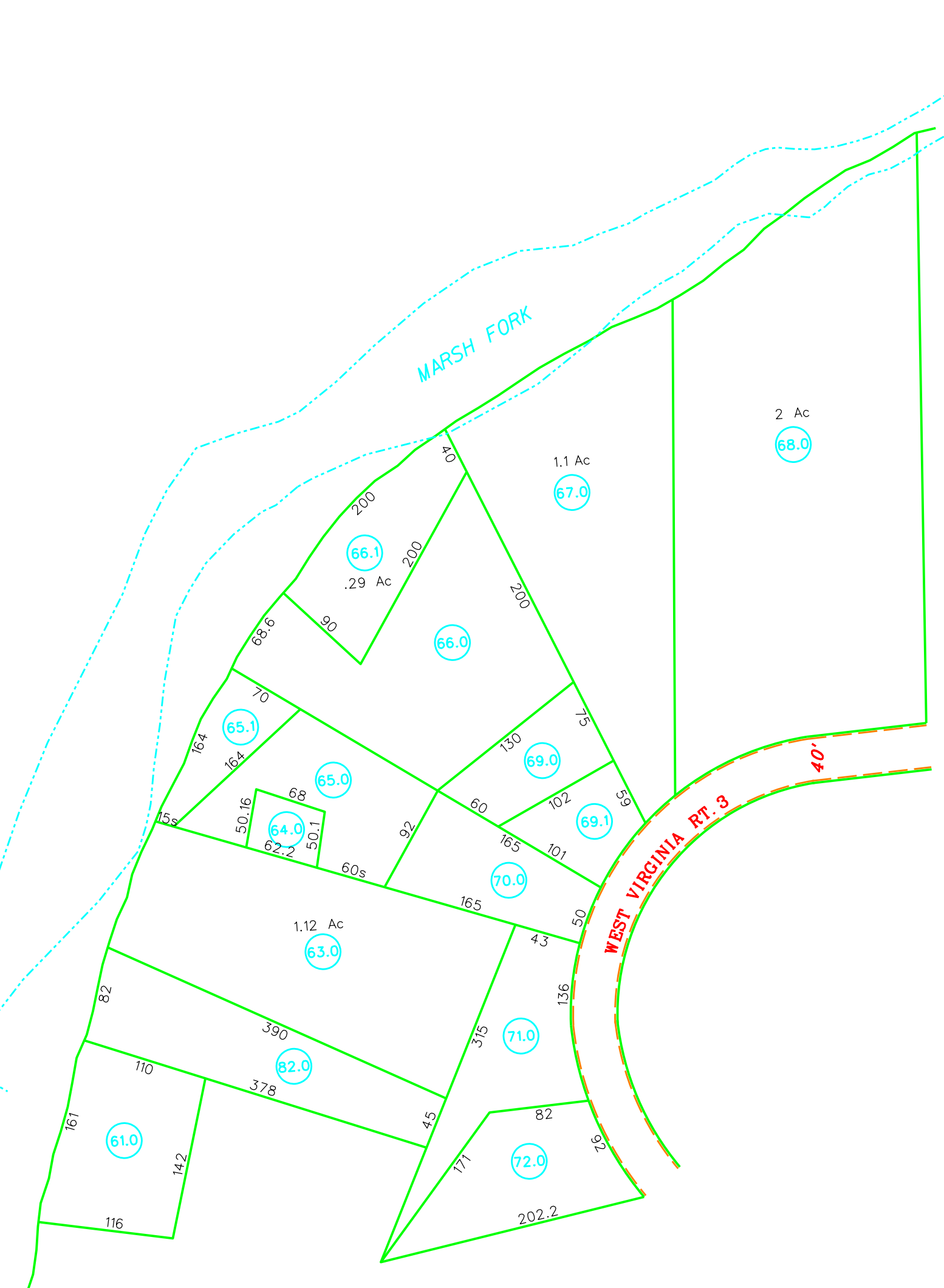
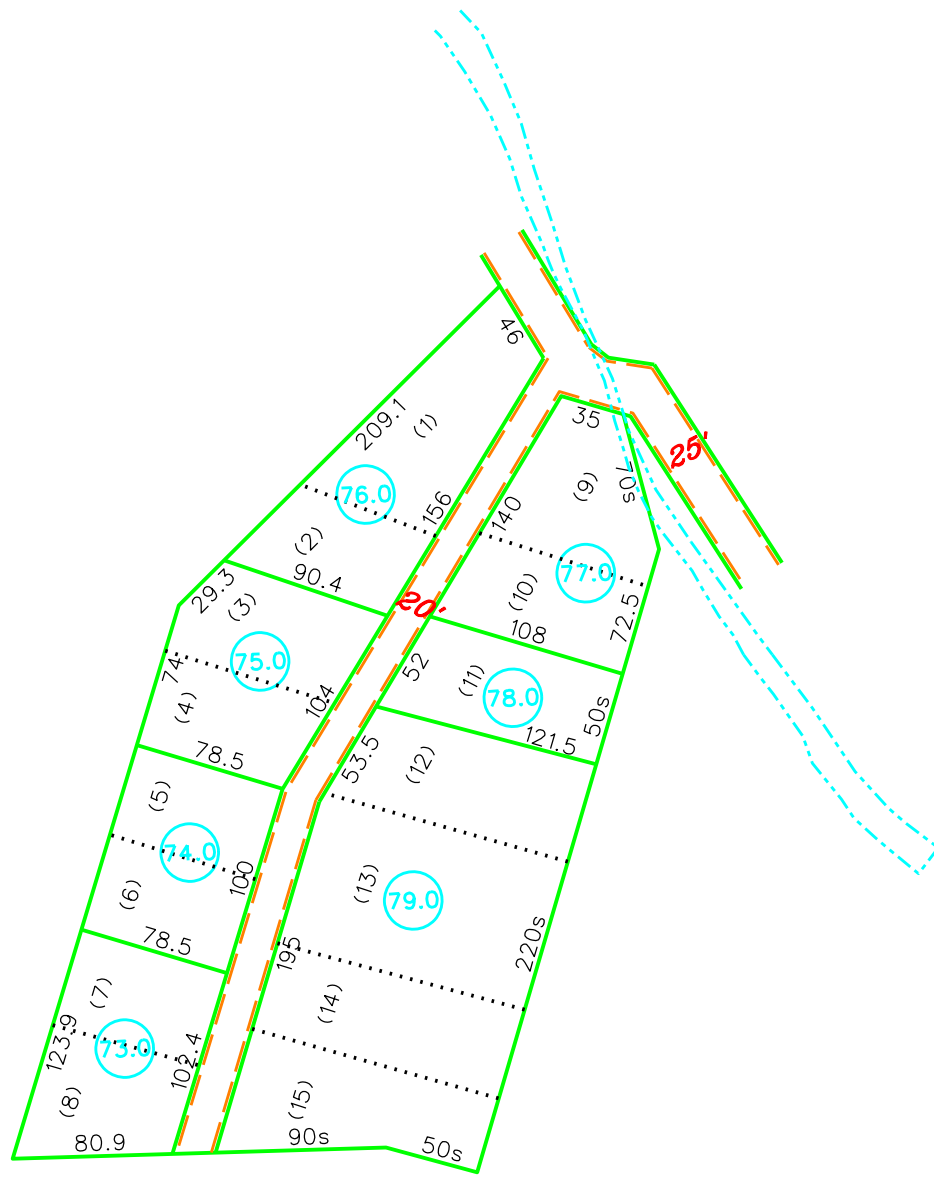




INSERT 1



INSERT 2



INSERT 3

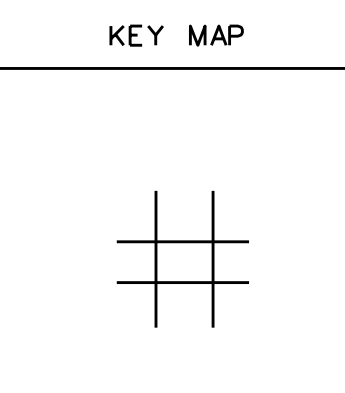
For Tax Purposes Only  
 Prepared by  
 RALEIGH COUNTY ASSESSOR'S OFFICE  
 BECKLEY, WV

LEGEND	
Property line	
Edge of pavement or roadway	
Corporation line	
District line	
County line	
Waterways	
2010 CHANGE	
Original lot line	
Deed lot number	(15)
Parcel or index number	(89)
Improvement	o
Railroad	

REVISIONS
1
2
3
4
5
6
7
8

**RESTRICTION**

All tax maps created under the provisions of reappraisal legislation are the property of Raleigh County West Virginia and the reproduction, copying, distribution or sale of such tax maps or any copies thereof without the written permission of the Raleigh County Assessor is prohibited by law.



**COUNTY OF RALEIGH**  
 Office of Assessor  
 Beckley, W.Va.

**MARSH FORK DISTRICT**  
 District 5 Map No. 11-B

Date, Aerial Photography: Photo No:  
 Date, Map: 11/05/98  
 Scale: 1"=100'